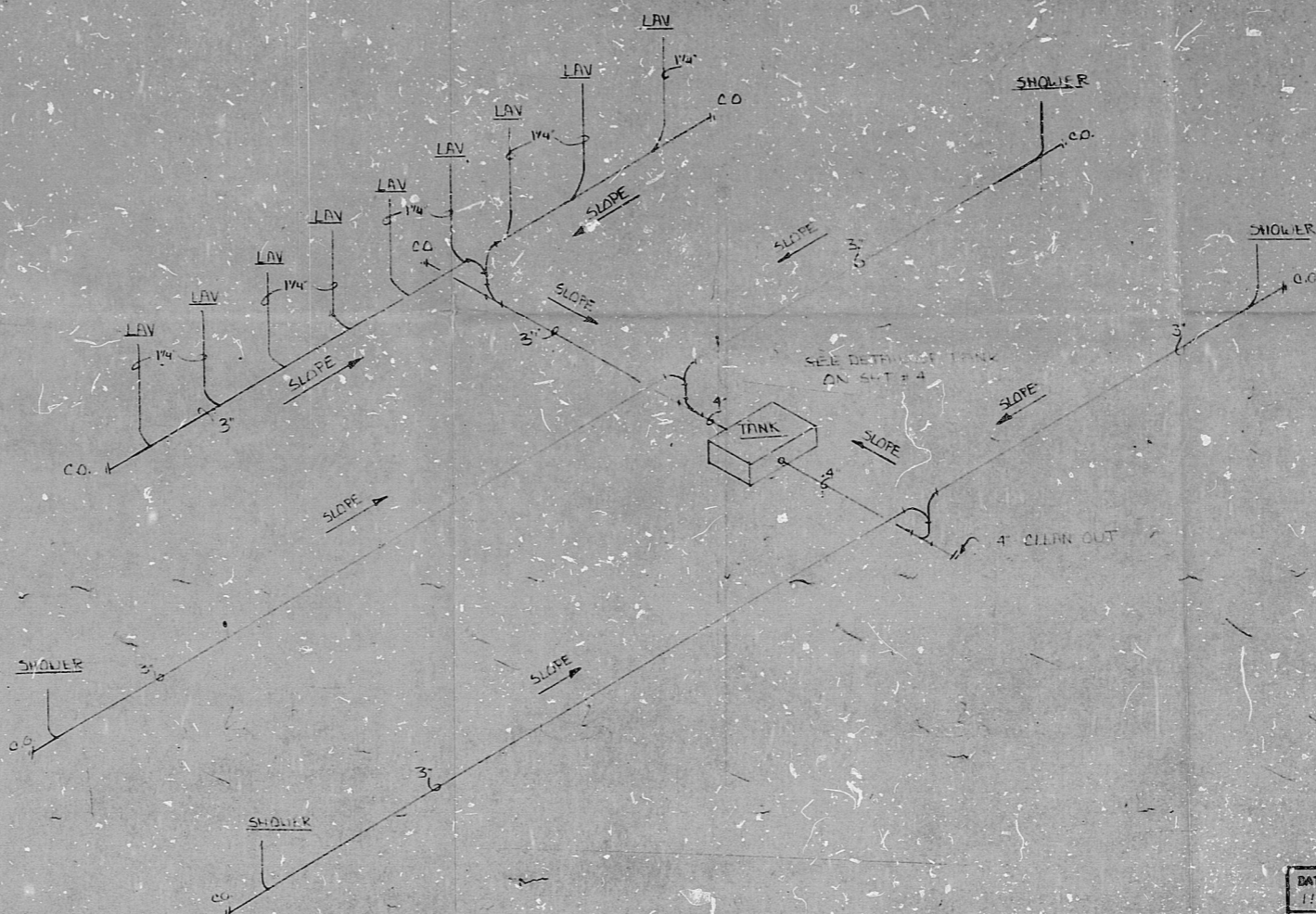


ALL PIPE SCHEDULE 40 PVC PLASTIC PIPE
 ALL PIPES SLOPE 1/4" PER FOOT
 NO PATENTS ON DATE



SI
 APERTURE
 CARD

DATE 1/27/87	COASTAL MODULAR CORPORATION	
DRAWN BY L. ECKHARDT	P.O. BOX 224 WHITE HAVEN, ND 58122 CROD 332-3600	
SHT 12 OF 12	MODULAR SYSTEM SALES 18, 264	
SCALE N.T.S.	WASTE SCHEMATIC	
	PROPOSAL NO.	SERIAL NO.
		4346-19

890501020

PDR RIDS

8905010229

