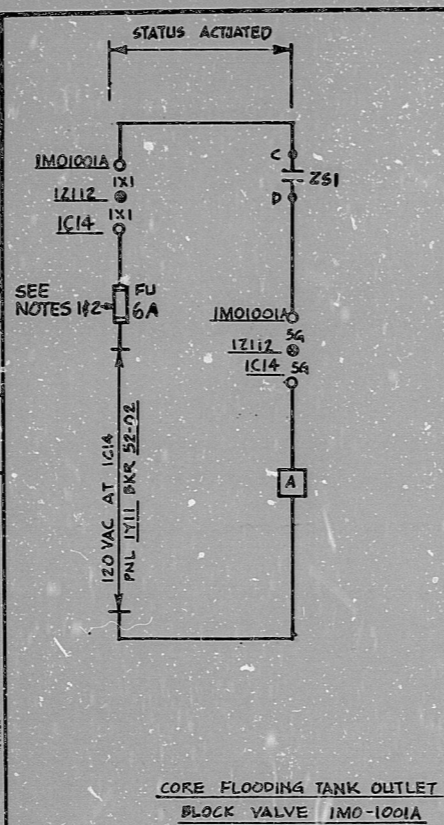


This drawing and the design it covers are the property of BECHTEL. They are hereby loaned and on the borrower's return agreement that they will not be reproduced, copied, signed, amended, or used except in the limited way and areas as permitted by any written consent given by the lender to the borrower.

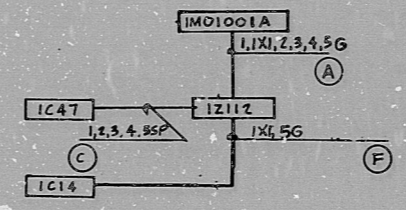
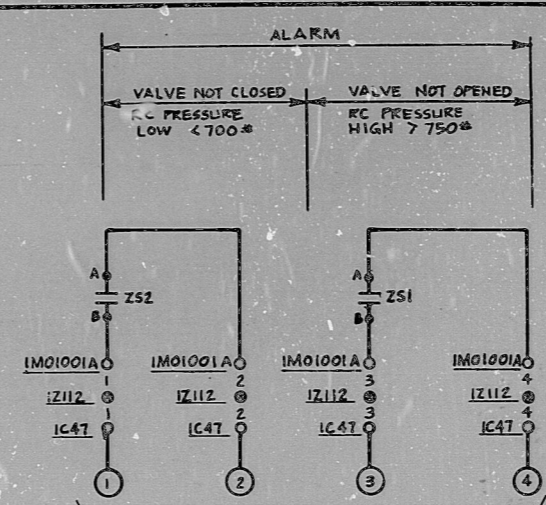
4	8/21/81	REVISED V/P REFERENCES	AKG
3	12/18/79	REVISED NOTES 1 & 2	AKG
2	7/13/78	ISSUED FOR CONSTRUCTION	AKG
1			



CORE FLOODING TANK OUTLET
BLOCK VALVE IM0-1001A

SCHEME 1A7001
S.U. DESIG. 1BHA
FU - FUSE (BUSS FNA-6A)

SCHEME NO.	VALVE NO.	120 VAC		CHAN.	LOCATION				S.U. DESIG.
		PNL	BKR		IC14	IC47	IZ112	IM01001A	
1AY001	IM01001A	1Y11	52-02	A	IC14	IC47	IZ112	IM01001A	1BHA
1BY001	IM01001B	1Y12	52-02	B	IC14	IC47	IZ135	IM01001B	1BHA
2AY001	ZM01101A	2Y11	52-02	A	IC14	IC47	ZZ112	ZM01101A	2BHA
2BY001	ZM01101B	2Y12	52-02	B	IC14	IC47	ZZ135	ZM01101B	2BHA



CONTINUED ON SHEET 3

- NOTE:
- FOR REACTOR POWER OPERATION, VALVE MUST BE FULLY OPEN AND POWER DISCONNECTED. THIS FEATURE IS CONTROLLED ADMINISTRATIVELY AFTER OPENING THE VALVE AND MANUALLY TRIPPING THE MCC BREAKER.
 - VALVE MUST BE CLOSED AND MOTOR OPERATOR CIRCUIT BREAKER LOCKED OUT DURING COOLDOWN, BEFORE RCS PRESSURE IS DECREASED TO 700 PSIG.

12S-1001-A2
VALVE ZS

LIMIT SWITCHES	CONT. NO.	VALVE POSITION	
		CLOSED	TRIP OPEN
Z.1 AT OPEN FND	A,B		
	C,D		
	E,F		
	G,H		
Z.S1 AT CLOSE END	A,B		
	C,D		
	E,F		
	G,H		

* DENOTES SPARE

REDUNDANT LIMIT SWITCHES STEM MTD. ON CORE FLOOD TANK DISCHARGE VALVES IM0-1001A & IM0-1001B
REFERENCES:
LOGIC DIAGRAM J-022 (Q)
VP 7220-M123A-30(1)
VP 7220-M123A-34(1)
VP 7220-M123A-34(2)
VP 7220-M135-320
E-99 SH.13 (TYPE 2C1)

BECHTEL
ANN ARBOR, MICHIGAN

MIDLAND PLANT UNITS 1 & 2
CONSUMERS POWER COMPANY

SCHEMATIC DIAGRAM
CORE FLOODING TANK OUTLET &
GAS SAMPLE VALVES

JOB No.	DRAWING No.	REV.
7220	E-254(Q) SH 2	4

I certify that the image contained on this frame was made in the normal and regular course of business, on the date stated below and that it is an accurate reproduction of the document submitted to reprographics.

DATE: _____
CAMERA OPERATOR: _____
SUPERVISOR OF REPROGRAPHICS: _____

16X

R:DS

8112280090

