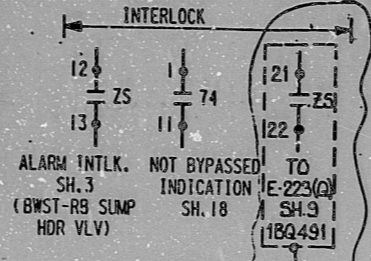
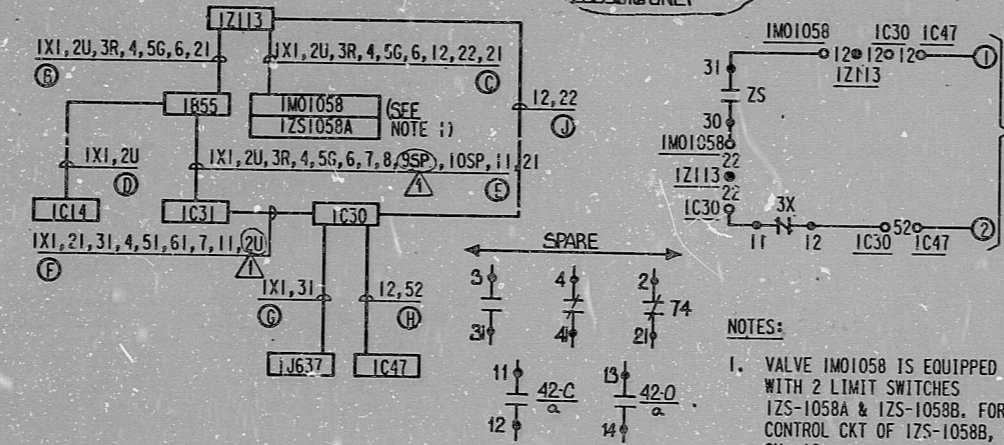
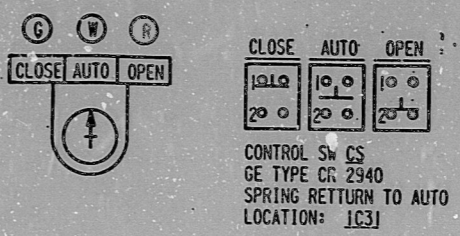


This drawing and the design it covers are the property of BECHTEL. They are hereby loaned and on the borrower's express agreement they shall not be reproduced, copied, loaned, exhibited, or used except in the limited way and for the purpose intended by the lender to the borrower.
 7220-115
 1 2-28-81 REVISIONS REVIEWED LIMIT SWITCHES EXP. ADAPTER
 0-24-80 ISSUED FOR CONSTRUCTION
 1 2-28-81
 2 0-24-80
 3 0-24-80
 4 0-24-80
 5 0-24-80
 6 0-24-80
 7 0-24-80
 8 0-24-80
 9 0-24-80
 10 0-24-80
 11 0-24-80
 12 0-24-80
 13 0-24-80
 14 0-24-80
 15 0-24-80
 16 0-24-80
 17 0-24-80
 18 0-24-80
 19 0-24-80
 20 0-24-80
 21 0-24-80
 22 0-24-80
 23 0-24-80
 24 0-24-80
 25 0-24-80
 26 0-24-80
 27 0-24-80
 28 0-24-80
 29 0-24-80
 30 0-24-80
 31 0-24-80
 32 0-24-80
 33 0-24-80
 34 0-24-80
 35 0-24-80
 36 0-24-80
 37 0-24-80
 38 0-24-80
 39 0-24-80
 40 0-24-80
 41 0-24-80
 42 0-24-80
 43 0-24-80
 44 0-24-80
 45 0-24-80
 46 0-24-80
 47 0-24-80
 48 0-24-80
 49 0-24-80
 50 0-24-80
 51 0-24-80
 52 0-24-80
 53 0-24-80
 54 0-24-80
 55 0-24-80
 56 0-24-80
 57 0-24-80
 58 0-24-80
 59 0-24-80
 60 0-24-80
 61 0-24-80
 62 0-24-80
 63 0-24-80
 64 0-24-80
 65 0-24-80
 66 0-24-80
 67 0-24-80
 68 0-24-80
 69 0-24-80
 70 0-24-80
 71 0-24-80
 72 0-24-80
 73 0-24-80
 74 0-24-80
 75 0-24-80
 76 0-24-80
 77 0-24-80
 78 0-24-80
 79 0-24-80
 80 0-24-80
 81 0-24-80
 82 0-24-80
 83 0-24-80
 84 0-24-80
 85 0-24-80
 86 0-24-80
 87 0-24-80
 88 0-24-80
 89 0-24-80
 90 0-24-80
 91 0-24-80
 92 0-24-80
 93 0-24-80
 94 0-24-80
 95 0-24-80
 96 0-24-80
 97 0-24-80
 98 0-24-80
 99 0-24-80
 100 0-24-80

CONTACT	RELAY 3X	FUNCTION	REF.
1	2	OPEN VALVE IM01058	E-253 SH. 13
3	4	SEAL IN	E-253 SH. 13
5	6	ON-LINE INDICATION	E-253 SH. 13
7	8	CLOSE VALVE IM01058	E-253 SH. 13
9	10	SPARE	E-253 SH. 13
11	12	ALARM AUX. RELAY	E-253 SH. 13



TERA APERTURE CARD



- NOTES:
- VALVE IM01058 IS EQUIPPED WITH 2 LIMIT SWITCHES 1ZS-1058A & 1ZS-1058B. FOR CONTROL CRT OF 1ZS-1058B, SEE SH. 16
 - FOR VALVE IM01058 (2M01158) LIM SW 1ZS-1058A HAS TORQUE SW. FOR VALVE IM0-1059 (2M0-1159) LIM SW 1ZS-1059B HAS TORQUE SW.

DECAY HEAT RETURN LETDOWN BYPASS VALVE IM01058
 SCHEME 1A85515
 S.U. DESIG. IBCA

VALVE ZS DEVELOPMENT

SWITCH NO.	TERM NO.	VALVE POSITION		
		CLOSED	INTER MED	OPEN
OAS1	15, 16			
OAS1	6, 7			
OAS2	17, 18			
OAS2	8, 9			
IAS1	10, 11			
IAS2	12, 13			
IAS3	19, 20			
IAS4	21, 22			
IAS5	28, 29			
IAS6	30, 31			
(OT/LS)	23, 24	OPENS ON HIGH OPENING TORQUE		
(CT/LS)	26, 27	OPENS ON HIGH CLOSING TORQUE		

* DENOTES SPARE
 ⊖ FIELD TO ADJUST LIM SWITCHES 1AS1, 1AS2 & 1AS4 AS SHOWN

BECHTEL
 ANN ARBOR, MICHIGAN

MIDLAND PLANT UNITS 1 & 2
 CONSUMERS POWER COMPANY

SCHEMATIC DIAGRAM
 DECAY HEAT COOLDOWN AND RETURN ISOLATION VALVES

JOB No.	DRAWING No.	REV.
7220	E-253(Q)SH. 14	1

ADAPTER TABLE

VALVE	LIMIT SWITCH	SCHEME	95 INTLK SCHEME	CONT	LOCATION	SU DESIG
IM01058	1ZS1058A	1A85515	1C0156	2, 3	1C14 IM01058 1R55 1Z113 IC30 IC31 IC47 1J637	1-BCA
IM01059	1ZS1058B	1B85616	1D0157	10, 11	1C14 IM01059 1R56 1Z113 IC30 IC31 IC47 1J637	1-BCA
2M01158	2ZS1158A	2A85515	2C0156	2, 3	2C14 2M01158 2B55 2Z113 2C30 2C31 2C47 2J637	2-BCA
2M01159	2ZS1158B	2B85616	2D0157	10, 11	2C14 2M01159 2B56 2Z113 2C30 2C31 2C47 2J637	2-BCA

I certify that the image contained on this frame was made in the normal and regular course of business, on the date stated below and that it is an accurate reproduction of the document submitted to the contractor for filing, by Bechtel Power Corporation.

11-2-81 R. Capelle J. Williams
 DATE CAMERA OPERATOR CONTRACTOR'S SUPERVISOR OR MANAGER

16X

RIDS

8112280078

