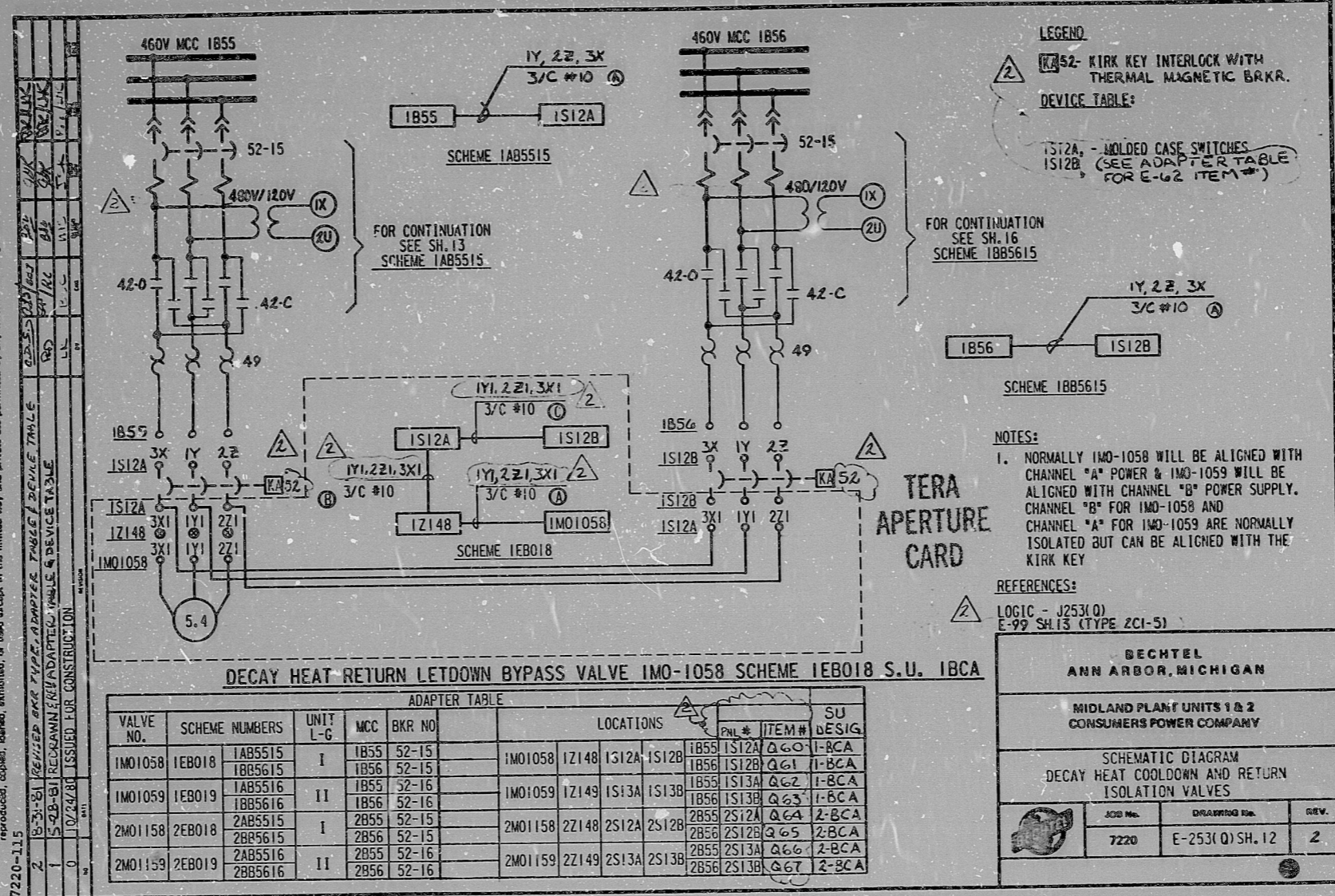


This drawing and the design it covers are the property of BECHTEL. They are hereby loaned and on the borrower's express agreement that they will not be reproduced, copied, loaned, exhibited, or used except in the limited way and private use permitted by any written consent given by the lender to the borrower.



LEGEND
 KA52 - KIRK KEY INTERLOCK WITH THERMAL MAGNETIC BRKR.
DEVICE TABLE:
 IS12A - MOLDED CASE SWITCHES
 IS12B (SEE ADAPTER TABLE FOR E-62 ITEM #*)

NOTES:
 1. NORMALLY IMO-1058 WILL BE ALIGNED WITH CHANNEL "A" POWER & IMO-1059 WILL BE ALIGNED WITH CHANNEL "B" POWER SUPPLY. CHANNEL "B" FOR IMO-1058 AND CHANNEL "A" FOR IMO-1059 ARE NORMALLY ISOLATED BUT CAN BE ALIGNED WITH THE KIRK KEY

REFERENCES:
 LOGIC - J253(O)
 E-99 SH.15 (TYPE 2CI-5)

DECAY HEAT RETURN LETDOWN BYPASS VALVE IMO-1058 SCHEME 1EB018 S.U. IBCA

VALVE NO.	SCHEME NUMBERS	UNIT L-G	MCC	BKR NO	LOCATIONS	SU					
						PNL #	ITEM# DESIG				
IMO1058	1AB5515	I	1855	52-15	IMO1058	1Z148	IS12A	1855	IS12A	Q60	1-BCA
	1BB5615										
IMO1059	1AB5516	II	1855	52-16	IMO1059	1Z149	IS13A	1855	IS13A	Q62	1-BCA
	1BB5616										
2MO1158	2AB5515	I	2855	52-15	2MO1158	2Z148	2S12A	2855	2S12A	Q64	2-BCA
	2BB5615										
2MO1159	2AB5516	II	2855	52-16	2MO1159	2Z149	2S13A	2855	2S13A	Q66	2-BCA
	2BB5616										

BECHTEL
 ANN ARBOR, MICHIGAN
 MIDLAND PLANT UNITS 1 & 2
 CONSUMERS POWER COMPANY
 SCHEMATIC DIAGRAM
 DECAY HEAT COOLDOWN AND RETURN
 ISOLATION VALVES
 ADD No. 7220 DRAWING No. E-253(O)SH.12 REV. 2

I certify that the image contained on this frame was made in the normal and regular course of business, on the date stated below and that it is an accurate reproduction of the document submitted to reprographics.

9-1-81 DATE
 Belinda M. ... SUPERVISOR OF REPROGRAPHICS
 G-1348

16X

R:DS

8112280075

