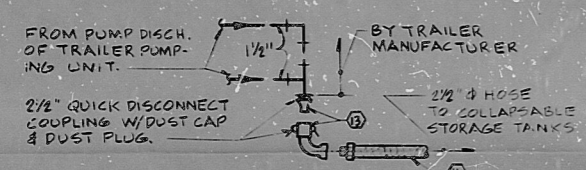
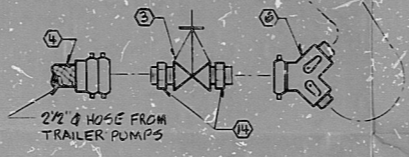


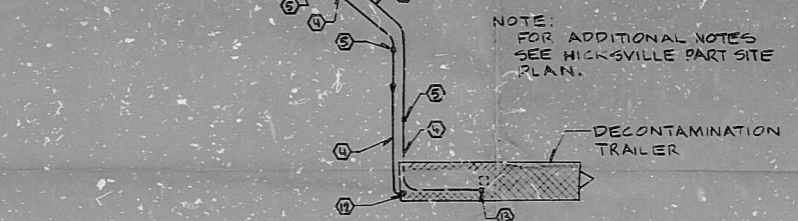
HICKSVILLE - PART SITE PLAN
SCALE: 1"=30'-0"



PUMPING UNIT DISCHARGE DETAIL
NO SCALE

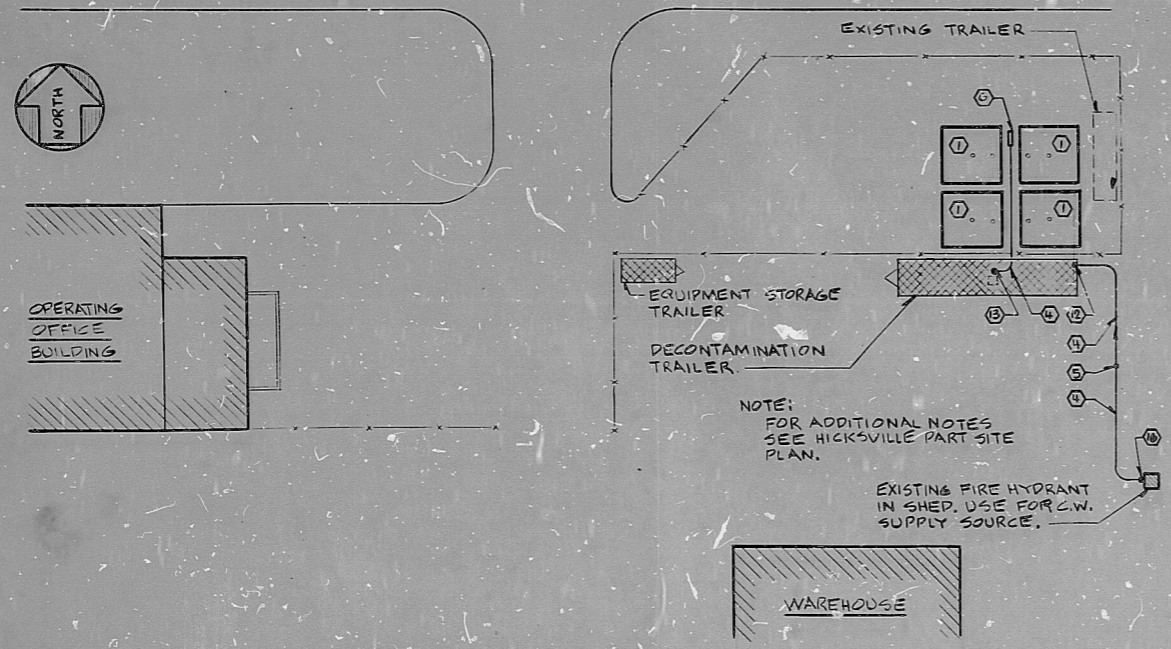


HOSE GATED 'Y' DETAIL
NO SCALE

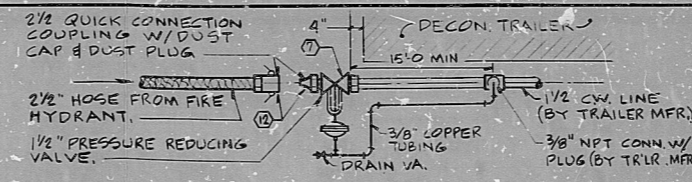


BELLMORE - PART SITE PLAN
SCALE: 1"=30'-0"

SI
APERTURE
CARD



ROSLYN - PART SITE PLAN
SCALE: 1"=30'-0"



CITY WATER CONN. TO TRAILER (ELEVATION)
NO SCALE

ITEM CODE	DESCRIPTION	QUANTITY REQUIRED			REMARKS / MANUFACTURER
		HICKSVILLE	ROSLYN	BELLMORE	
1	COLLAPSIBLE STORAGE TANK - 15000 GAL. CAP. W/ 2" VENT, 2" FILL	8	4	4	10 "AERO TEC LABS, INC." COLLAPSIBLE TANKS
2	1 1/2" Ø SINGLE JACKET LINED FIRE HOSE W/ MALE & FEMALE SWIVEL COUPLING	4	2	2	8 "POTTER-ROEMER, INC. FIG. NO. 2901 (50' LONG)
3	2 1/2" BRONZE SCREWED GATE VALVE CLASS 125, SOLID WEDGE DISC.	2	1	1	4 "CRANE FIG. 623
4	2 1/2" Ø DOUBLE JACKET LINED FIRE HOSE W/ MALE & FEMALE SWIVEL COUPLING	12	3	7	22 "POTTER-ROEMER, INC. FIG. NO. 2914 (50' LONG)
5	JUNCTION BETWEEN HOSE SEGMENTS (NO ADDITIONAL PARTS REQ'D)	-	-	-	-
6	2 1/2" x 1 1/2" x 1 1/2" GATED 'Y' CONN. W/ SWIVEL INLET	2	1	1	4 "POTTER-ROEMER, INC. FIG. NO. 8005"
7	1 1/2" PRESSURE REDUCING VA. (INLET = 0-100 PSIG, OUTLET = 24-45 PSIG)	2	1	1	4 "HOFFMAN-ITT MODEL T10, W/ G. CAPS & NO. 258"
8	2 1/2" Ø DOUBLE JACKET LINED FIRE HOSE W/ MALE & FEMALE SWIVEL COUPLING	1	0	0	1 "POTTER-ROEMER, INC. FIG. NO. 2912 (25' LONG)
9	2" SCREWED ANGLE GLOBE VA. CLASS 125, ALL BRONZE	8	4	4	16 "CRANE FIG. NO. 2
10	2" DRY DISCONNECT ADAPTER W/ DUST CAP	8	4	4	16 "EVER-TITE STD. QUICK COUPLING, NO. B2A
11	2" DRY DISCONNECT COUPLER W/ DUST PLUG	4	2	2	8 "EVER-TITE STD. QUICK COUPLING, NO. B2B
12	2 1/2" QUICK CONNECT ADAPTER W/ DUST CAP & 2 1/2" COUPLER W/ DUST PLUG	2	1	1	4 "EVER-TITE STD. QUICK CPLG. PART D & F
13	2 1/2" QUICK CONN. ADAPTER W/ DUST CAP & 2 1/2" COUPLER W/ DUST PLUG (90 ELL)	2	1	1	4 "EVER-TITE STD. QUICK CPLG. PART F & 90 E"
14	2 1/2" MALE x MALE ADAPTER (NATIONAL STD. THREAD x N.P.T.)	7	2	2	13 "POTTER-ROEMER, INC. FIG. NO. 2830
15	2 1/2" FEMALE x FEMALE ADAPTER (NATIONAL STD. THREAD x NEW YORK CORP. TH'D.)	1	0	0	1 "POTTER-ROEMER, INC. FIG. NO. 2820
16	2 1/2" MALE x FEMALE ADAPTER (M = NATL. STD. THREAD x NEW YORK CORP. TH'D.)	0	1	1	2 "POTTER-ROEMER, INC. FIG. NO. 2825
17	2" MALE x 1 1/2" FEMALE ADAPTER (NATL. STD. THREAD BOTH ENDS)	4	2	2	8 "POTTER-ROEMER, INC. FIG. NO. 2835

NOTES:
1. ALL HOSE ENDS & SCREWED ADAPTERS TO BE BRASS.
2. QUICK COUPLINGS TO BE CAST ALUMINUM.
3. QUICK COUPLINGS TO HAVE N.P.T. ON ADAPTER PART, AND NATIONAL STANDARD THREAD ON COUPLER PART.
4. MISG. PIPE FITTINGS, BUSHINGS, NIPPLES ETC. ARE NOT LISTED.

DECONTAMINATION TRAILERS SITE DETAILS	
BELLMORE, HICKSVILLE & ROSLYN OPERATIONS CENTERS	
LONG ISLAND LIGHTING COMPANY OFFICE OF ENGINEERING 175 EAST OLD COUNTRY ROAD HICKSVILLE, NEW YORK	
DRAWN BY A. WEITZ	SCALE AS NOTED WO 10-4430-11
CHECKED BY G. KAYLOE	DATE 10-16-86 F-51486-1
NO. DATE W.O.	DESCRIPTION
1 2-1-87 44430	REVISED & REDRAWN
BY	CKD
APPRO	APPD
CADSET NO. 24	FOLDER NO. 44

1170705028

PDR RIDS

8905010111

