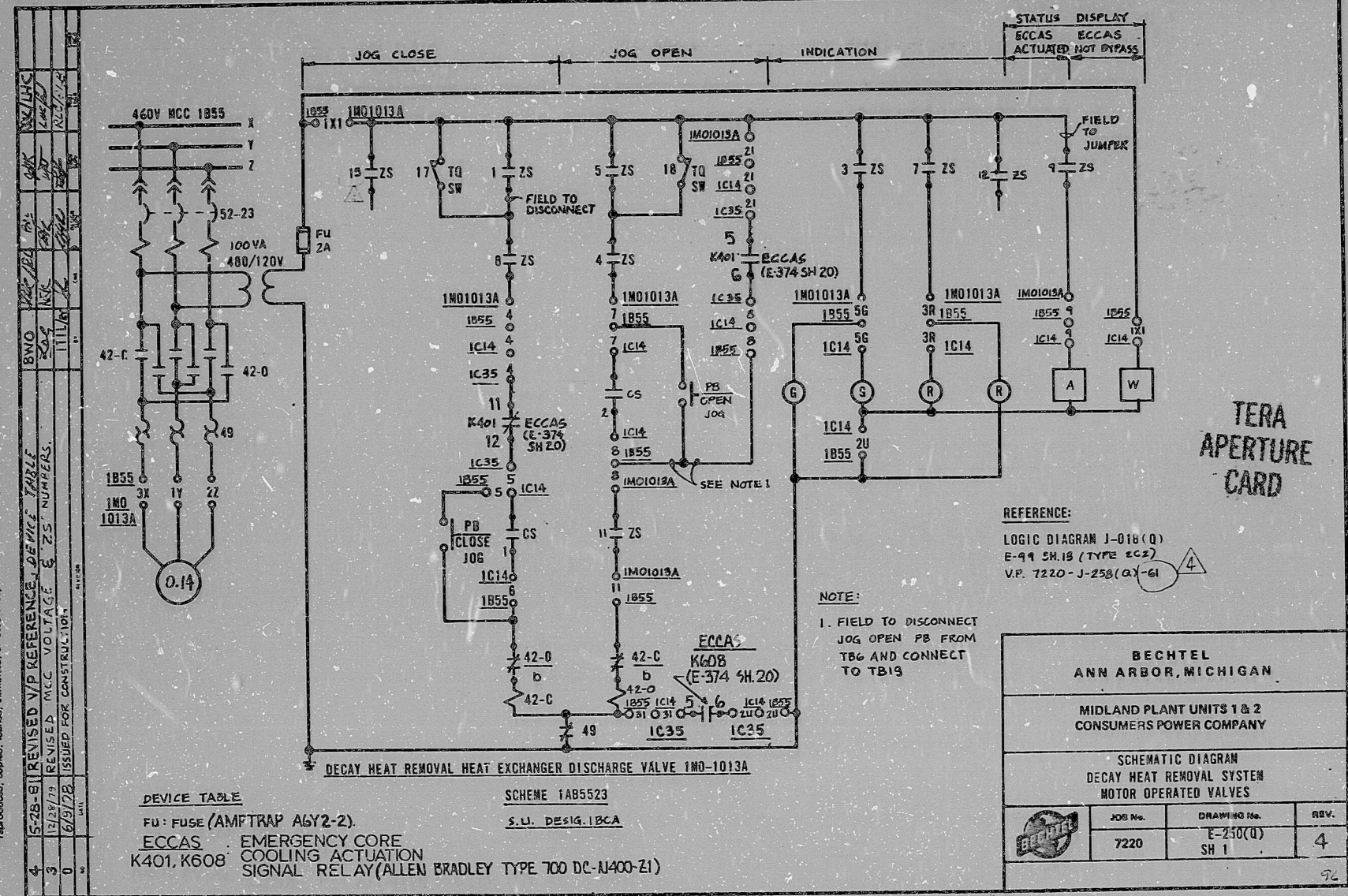


This drawing and the design it covers are the property of BECHTEL. They are hereby loaned and on the borrower's express agreement that they will not be reproduced, copied, leased, exhibited, or used except in the limited way and extent permitted by any written consent given by the lender to the borrower.



REV	DATE	DESCRIPTION
1	11/11/78	ISSUED FOR CONSTRUCTION
2	01/17/79	REVISED MCC VOLTAGE & ZS NUMBERS
3	01/23/79	REVISED V/P REFERENCE - SEE TABLE
4	05/28/81	REVISED V/P REFERENCE - SEE TABLE

DEVICE TABLE

FU: FUSE (AMFTRAP AGY2-2)
 ECCAS: EMERGENCY CORE COOLING ACTUATION SIGNAL RELAY (ALLEN BRADLEY TYPE 700 DC-N400-Z1)
 K401, K608: COOLING ACTUATION SIGNAL RELAY (ALLEN BRADLEY TYPE 700 DC-N400-Z1)

SCHEME 1AB5523
 S.L. DESIGN: IBCA

NOTE:
 1. FIELD TO DISCONNECT JOG OPEN PB FROM TB6 AND CONNECT TO TB19

REFERENCE:
 LOGIC DIAGRAM J-018(Q)
 E-99 SR.15 (TYPE ECC2)
 V.P. 7220-J-258(OX-61)

BECHTEL ANN ARBOR, MICHIGAN		
MIDLAND PLANT UNITS 1 & 2 CONSUMERS POWER COMPANY		
SCHEMATIC DIAGRAM DECAY HEAT REMOVAL SYSTEM MOTOR OPERATED VALVES		
JOB No.	DRAWING No.	REV.
7220	E-250(Q) SH 1	4

I certify that the image contained on this frame was made in the normal and regular course of business, on the date stated below and that it is an accurate reproduction of the document submitted to reprographics.

6-9-81 R. Capelle
 DATE CAMERA OPERATOR SUPERVISOR OF REPROGRAPHICS

16X

RIDS

8112230642

