

FIG 2
 TYPICAL DC MOTOR OPERATED VALVE AND MOTOR CONTROL CENTER

SWITCH CONTACT NO.	LIMIT SWITCH DEVELOPMENT	
	VALVE OPENING %	
231	0	100
232		
233		
234		
235		
236		
237		
238		

(TYPICAL FOR Z89 THRU Z316)
 WS 18 - TORQUE SWITCH OPENS ON MECHANICAL OVERLOAD IN OPENING DIRECTION.
 WS 17 - TORQUE SWITCH OPENS ON MECHANICAL OVERLOAD IN CLOSING DIRECTION.

MTG TO LOC	ISOLATION ASST	CONN PINS		CONN PINS		CONN PINS		CONN PINS		CONN PINS		CONN PINS		FUNCTION	INPUT DIV
		PI	PO	PI	PO	PI	PO	PI	PO	PI	PO	PI	PO		
H11-P82	AT1	SH. 17	SH. 17	SH. 17	SH. 17	SH. 17	SH. 17	SH. 17	SH. 17	SH. 17	SH. 17	SH. 17	SH. 17	SH. 17	DIV. 2
H11-P82	AT3	SH. 15	SH. 15	SH. 15	SH. 15	SH. 15	SH. 15	SH. 15	SH. 15	SH. 15	SH. 15	SH. 15	SH. 15	SH. 15	DIV. 2
H11-P82	AT4	SH. 15	SH. 15	SH. 15	SH. 15	SH. 15	SH. 15	SH. 15	SH. 15	SH. 15	SH. 15	SH. 15	SH. 15	SH. 15	DIV. 2
H11-P82	AT5	SH. 16	SH. 16	SH. 16	SH. 16	SH. 16	SH. 16	SH. 16	SH. 16	SH. 16	SH. 16	SH. 16	SH. 16	SH. 16	DIV. 2
H11-P82	AT6	SH. 8	SP	SP	SP	SP	SP	SP	SP	SP	SP	SP	SP	SP	DIV. 2
H11-P82	AT7	SH. 6	SP	SP	SP	SP	SP	SP	SP	SP	SP	SP	SP	SP	DIV. 2

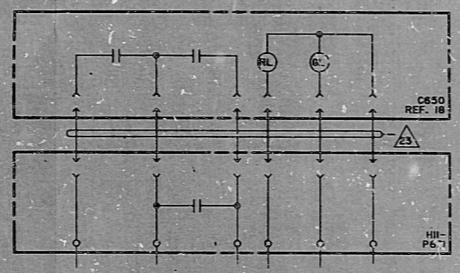


FIG 1
 TYPICAL NON-REVERSING DC MOTOR STARTER

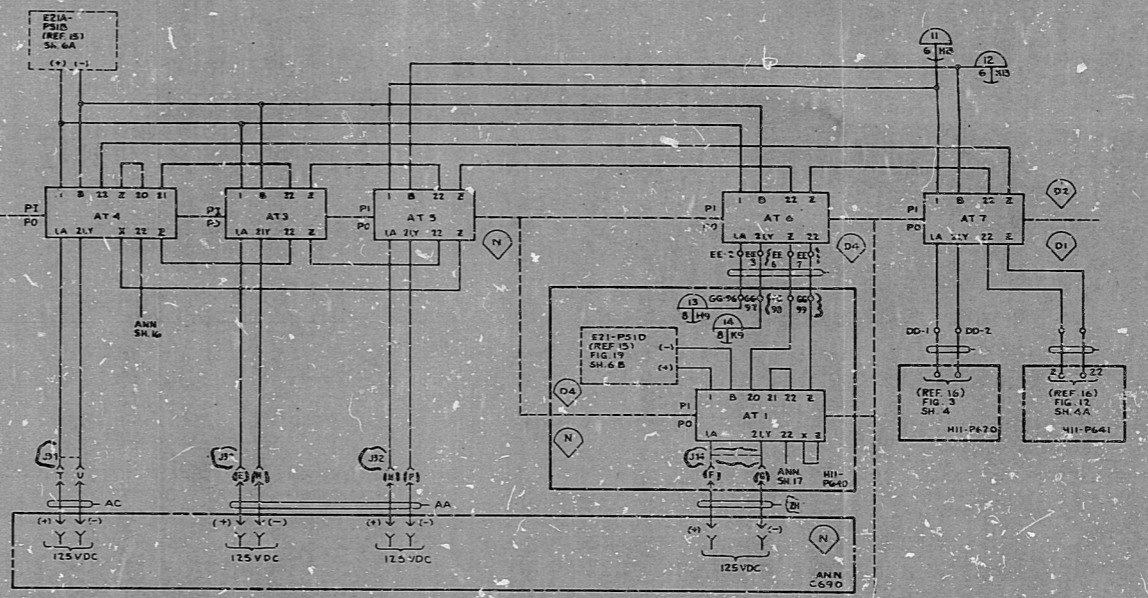


FIG 9
 POWER DISTRIBUTION FOR PA. LL. H11-P82

AS-SWP/CC
 PRC APERTURE CARD
 108F5-N-201-100-57 (15)
 LINE CODES AA, AC, ZR

NO.	REV.	DATE	BY	CHKD.	APP.
1	1	7-27-57
2	2	8-2-57
3	3	8-15-57
4	4	8-22-57
5	5	8-29-57

791E421AC
 SHEET NO. 11

RIDS

8307280473

