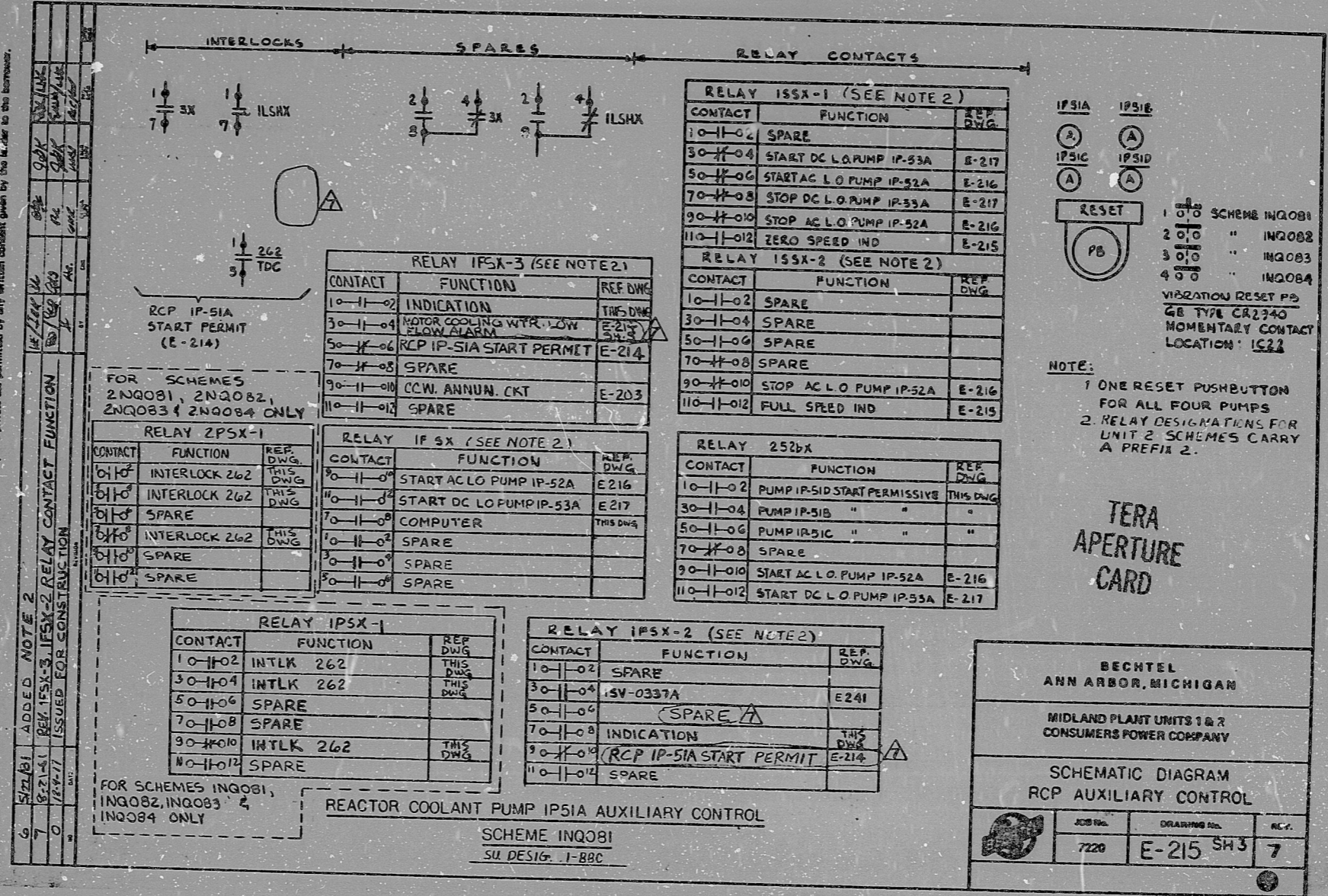


This drawing and the design it covers are the property of BECHTEL. They are hereby loaned and on the borrower's express agreement that they will not be reproduced, copied, loaned, exhibited, or used except in the limited way and degree permitted by any written consent given by the L.A. to the borrower.



| REV. | DATE | BY | CHKD. | DESCRIPTION |
|------|-----------|---|-------|-------------|
| 5 | 5/21/81 | ADD NOTE 2 | | |
| 4 | 5/21/81 | REV 1PSX-3, 1PSX-2 RELAY CONTACT FUNCTION | | |
| 3 | 0 7/27/77 | ISSUED FOR CONSTRUCTION | | |

FOR SCHEMES 2NQ081, 2NQ082, 2NQ083 & 2NQ084 ONLY

| CONTACT | FUNCTION | REF. DWG. |
|-----------|---------------|-----------|
| 10-11-02 | INTERLOCK 262 | THIS DWG. |
| 30-11-04 | INTERLOCK 262 | THIS DWG. |
| 50-11-06 | SPARE | |
| 70-11-08 | INTERLOCK 262 | THIS DWG. |
| 90-11-10 | SPARE | |
| 110-11-12 | SPARE | |

| CONTACT | FUNCTION | REF. DWG. |
|-----------|-----------|-----------|
| 10-11-02 | INTLK 262 | THIS DWG. |
| 30-11-04 | INTLK 262 | THIS DWG. |
| 50-11-06 | SPARE | |
| 70-11-08 | SPARE | |
| 90-11-10 | INTLK 262 | THIS DWG. |
| 110-11-12 | SPARE | |

FOR SCHEMES INQ081, INQ082, INQ083 & INQ084 ONLY

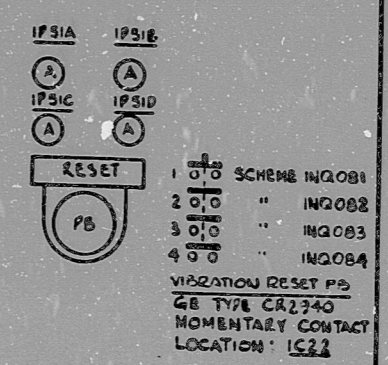
| CONTACT | FUNCTION | REF. DWG. |
|-----------|------------------------------------|-----------|
| 10-11-02 | INDICATION | THIS DWG. |
| 30-11-04 | MOTOR COOLING WATER LOW FLOW ALARM | E-215 |
| 50-11-06 | RCP IP-51A START PERMIT | E-214 |
| 70-11-08 | SPARE | |
| 90-11-10 | CCW. ANNUN. CKT | E-203 |
| 110-11-12 | SPARE | |

| CONTACT | FUNCTION | REF. DWG. |
|-----------|-------------------------|-----------|
| 10-11-02 | START AC LO PUMP IP-52A | E-216 |
| 30-11-04 | START DC LO PUMP IP-53A | E-217 |
| 50-11-06 | COMPUTER | THIS DWG. |
| 70-11-08 | SPARE | |
| 90-11-10 | SPARE | |
| 110-11-12 | SPARE | |

| CONTACT | FUNCTION | REF. DWG. |
|-----------|-------------------------|-----------|
| 10-11-02 | SPARE | |
| 30-11-04 | START DC LO PUMP IP-53A | E-217 |
| 50-11-06 | START AC LO PUMP IP-52A | E-216 |
| 70-11-08 | STOP DC LO PUMP IP-53A | E-217 |
| 90-11-10 | STOP AC LO PUMP IP-52A | E-216 |
| 110-11-12 | ZERO SPEED IND | E-215 |

| CONTACT | FUNCTION | REF. DWG. |
|-----------|------------------------|-----------|
| 10-11-02 | SPARE | |
| 30-11-04 | SPARE | |
| 50-11-06 | SPARE | |
| 70-11-08 | SPARE | |
| 90-11-10 | STOP AC LO PUMP IP-52A | E-216 |
| 110-11-12 | FULL SPEED IND | E-215 |

| CONTACT | FUNCTION | REF. DWG. |
|-----------|------------------------------|-----------|
| 10-11-02 | PUMP IP-51D START PERMISSIVE | THIS DWG. |
| 30-11-04 | PUMP IP-51B " " | " " |
| 50-11-06 | PUMP IP-51C " " | " " |
| 70-11-08 | SPARE | |
| 90-11-10 | START AC LO PUMP IP-52A | E-216 |
| 110-11-12 | START DC LO PUMP IP-53A | E-217 |



NOTE:
 1. ONE RESET PUSHBUTTON FOR ALL FOUR PUMPS
 2. RELAY DESIGNATIONS FOR UNIT 2 SCHEMES CARRY A PREFIX 2.

TERA APERTURE CARD

BECHTEL
ANN ARBOR, MICHIGAN

MIDLAND PLANT UNITS 1 & 2
CONSUMERS POWER COMPANY

SCHEMATIC DIAGRAM
RCP AUXILIARY CONTROL

| | | |
|---------|-------------|------|
| JOB NO. | DRAWING NO. | REV. |
| 7220 | E-215 SH3 | 7 |

I certify that the image contained on this frame was made in the normal and regular course of business, on the date stated below and that it is an accurate reproduction of the document submitted to reprographics.

9-1-81 DATE
 M. C. SIESAY CAMERA OPERATOR
 SUPERVISOR OF REPROGRAPHICS

16X

8.8"
 11"
 17"

8.5"
 11"
 17"

RIDS

8112230481

