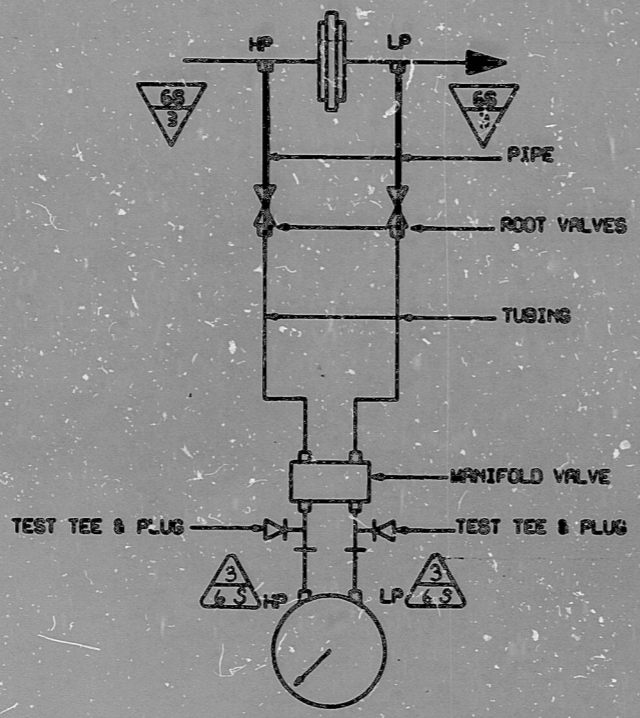


2RNFS710 (PUMP A)
2RNFS720 (PUMP B)
SEE LINE REV. 3



2RNFS710 (PUMP A)
2RNFS720 (PUMP B)
SEE LINE REV. 3

- NOTES:
1. SLOPE IMPLUSE LINE DOWNWARD FROM PROCESS TAP TO INSTRUMENT A MINIMUM OF 1/4" PER FOOT.
 2. FITTINGS, TUBINGS, AND VALVES DESIGNATED ON THIS DETAIL BY CLASSIFICATION 6s OF THE FITTINGS CLASSIFICATION LIST ARE SAFETY CLASS. SUBSTITUTES FROM OTHER CLASSIFICATIONS ARE NOT PERMITTED.

NUCLEAR SAFETY RELATED EXCLUSIONS

1. Fittings, Tubings, Piping, & Valves (Not part of a Safety Related Piping System, Etc.)
 - a) None
2. Instruments (Do not serve a Safety function)
 - a) 2RNFS5710 & 2RNFS5710
 - b) 2RNFS5720 & 2RNFS5720

FUNCTIONAL DESCRIPTION: (FOR "A" APPLIES TO "B")
2RNFS710 MONITORS SAFETY INJECTION PUMP BEARING OIL COOLER AND ALARMS ON LOW FLOW.

AS-BUILT
DATE 7-9-81

QA CONDITION 1
NUCLEAR SAFETY RELATED
(Except As Excluded Above)

SI
APERTURE
CARD

				DUKE POWER COMPANY MCGUIRE NUCLEAR STATION UNIT 2			
				INSTRUMENT DETAILS SAFETY INJECTION PUMP BEARING OIL COOLER			
2 Added "As-Built" QA stamp				DESIGNER: C.L.A. DATE: 3/27/76			
1. Rel. for Const.				DRAWN: J.C. DATE: 3/27/76			
ORIG. PRELIMINARY				CHECKED: J.A.L. DATE: 3/27/76			
NO.	REVISIONS	CHKD	APPR	DATE	CIVIL	ELEC.	MECH.
				SCALE	DWG. NO. MC-2455-RN23		REV 2

FOR INFORMATION
ONLY

SHT 3
CL 3 HYDRO

PDR RIDS

8904190479

