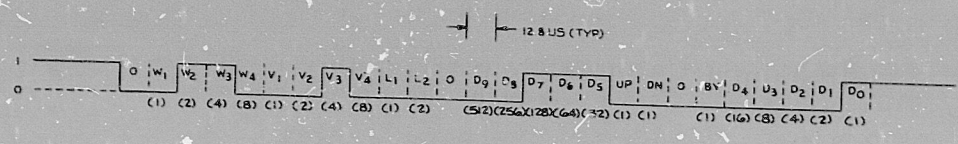


TYPICAL SERIAL DATA WORD



DEFINITION	ABOVE EXAMPLE										
$VW = \text{ARBITRARY DETECTOR LOCATION} = V_1 + V_2 + V_3 + V_4$ (SEE SH 2)	$V = 0 + 0 + 4 + 0 = 4$ $W = 0 + 2 + 4 + 0 = 6$ $VW = 46$ 30-47										
$L = \text{DETECTOR LEVEL}$ <table border="1" style="display: inline-table; vertical-align: middle;"> <tr><td>L1</td><td>L2</td></tr> <tr><td>0</td><td>0</td></tr> <tr><td>1</td><td>0</td></tr> <tr><td>0</td><td>2</td></tr> <tr><td>1</td><td>2</td></tr> </table>	L1	L2	0	0	1	0	0	2	1	2	SELECTED DETECTOR = 30-47A
L1	L2										
0	0										
1	0										
0	2										
1	2										
$\% \text{ HEAT FLUX} = \frac{Z_2 D_0 \rightarrow D_9}{10}$	$\% \text{ HF} = \frac{0 + 0 + 128 + 64 + 32 + 16 + 8 + 4 + 2 + 1}{5} = 45$										
UP = UPSCALE ALARM DN = DOWNSCALE ALARM BY = BYPASSES	UP = 0 (BELOW UPSCALE ALARM POINT) DN = 0 (ABOVE DOWNSCALE ALARM POINT) BY = 0 (NOT BYPASSED)										

TO RC 5 (REF 1)

TI APERTURE CARD

LINE CODES, NONE THIS SHEET

111 NLS346	3	RETRACED GEN DOC CHG	RETRACED GEN DOC CHG
		CHK BY	CHK BY
		PSHANNON	PSHANNON
		MC S.I.	MC S.I.
		85E230AA	85E230AA
		REV 1	REV 1

PDR RIDS

84/2200050

