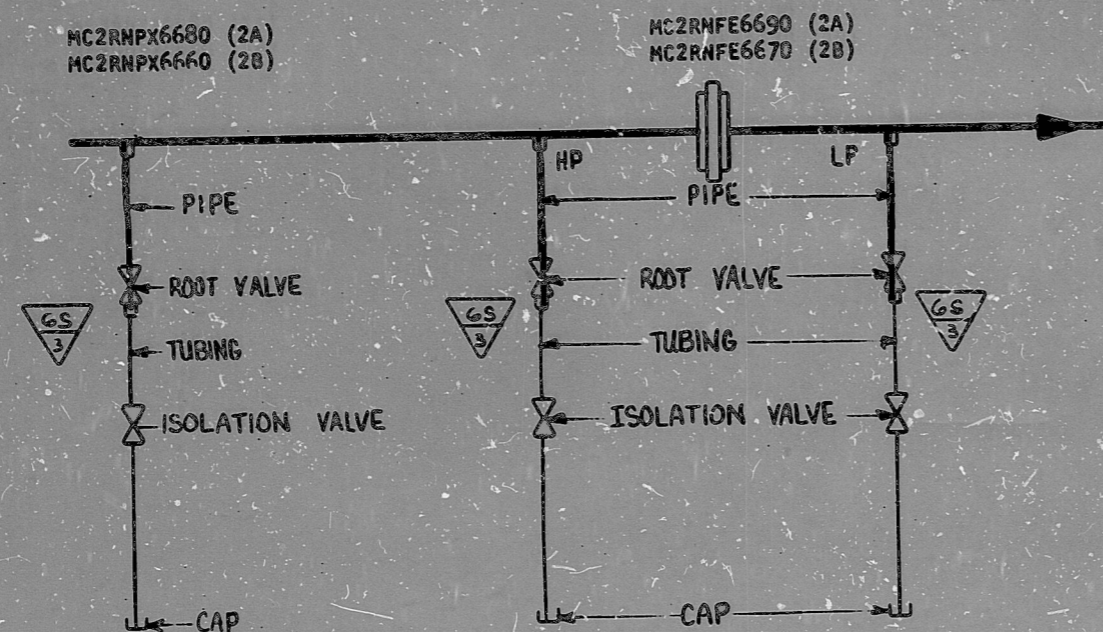


NUCLEAR SAFETY-RELATED EXCLUSIONS

1. Fittings, tubing, piping & valves (not part of a safety-related piping system, etc.)
 - a) NONE
2. Instruments (do not serve a safety function)
 - a) 2RNPX6660, 2RNF66670, 2RNPX6680
2RNF66690



NOTE

1. 50-700 ROOT VALVES ARE REQUIRED FOR THIS APPLICATION. SUPPORT REQUIREMENTS PER ICS STANDARDS ARE APPLICABLE FOR THE V26S ROOT VALVE REPLACEMENT.

FUNCTIONAL DESCRIPTION (FOR A APPLIES TO B)

MC2RNF6690 PROVIDES TEMPORARY FLOW INDICATION FOR THROTTLE VALVE SET-UP.
 MC2RNPX6680 PROVIDES A TEST PT. FOR AUX. FEEDWATER PUMP MOTOR COOLER. INSTRUMENTATION PROVIDED BY PROJECTS GROUP.

**Q A CONDITION 1
 NUCLEAR SAFETY RELATED**

EXCEPT AS EXCLUDED ABOVE

										DUKE POWER COMPANY	
										MCGUIRE NUCLEAR STATION UNIT NO 2	
										AUX. FEEDWATER PUMP	
										MOTOR COOLER	
										2A AND 2B	
0	ADDED PER NSM HG-20671/00	DESIGNER	DATE	CHKD	INSP.	W/AVG	DATE	DRWNS	DATE	INSP.	DATE
	IMP. DATE 7/09/87										
NO.	REVISIONS	DRN	CHKD	APPR	DATE	CIVIL	ELEC.	MECH.	INSPECTED	DWG. NO.	MC-2499-RN54

SI
 APERTURE
 CARD

FOR INFORMATION
 ONLY

SHT 6
 CL-3 HDRS

PDR RIDS

8904190 452

