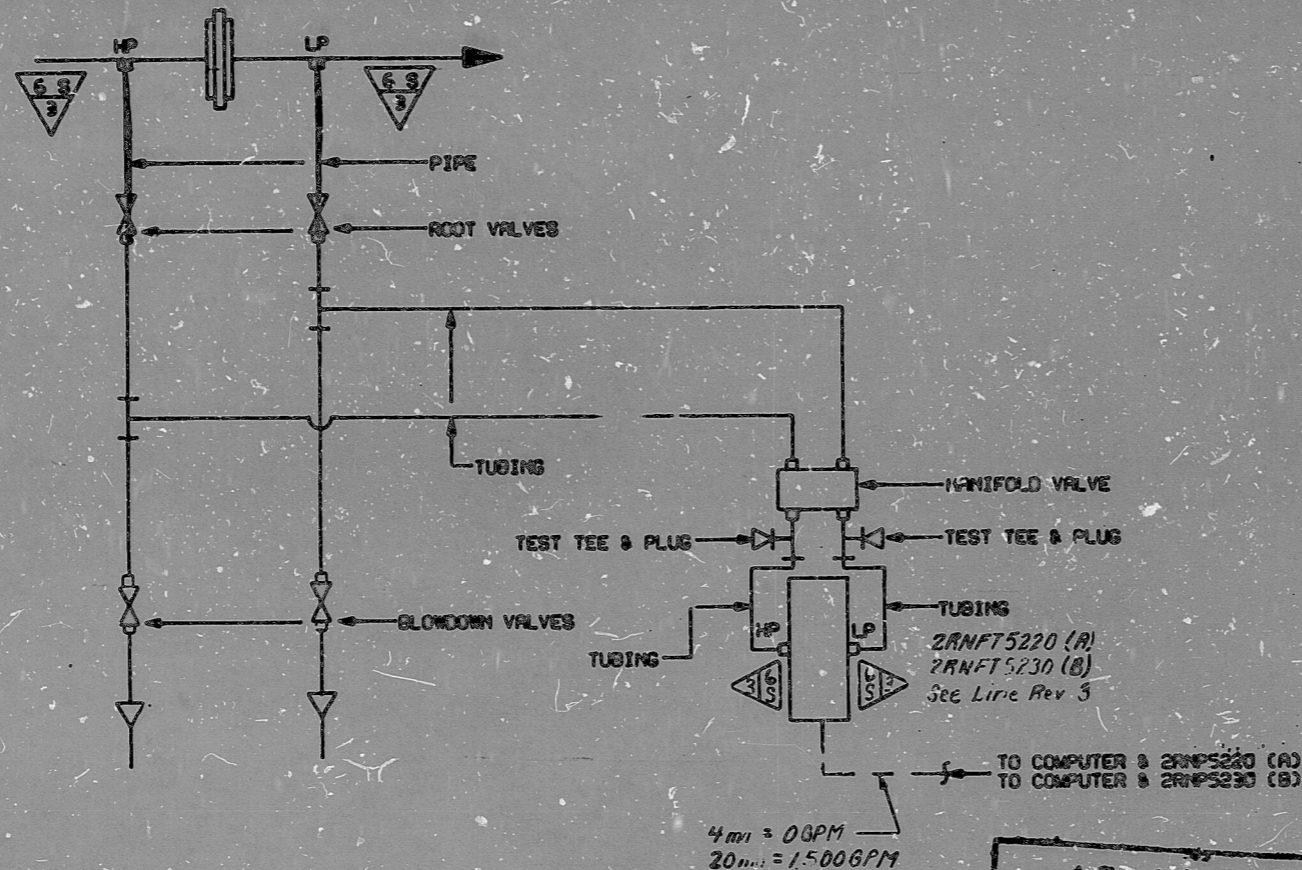


2RNFE5220 (A)  
2RNFE5230 (B)  
SEE LINE REV. 3



FUNCTIONAL DESCRIPTION: (FOR A, APPLIES TO B)

2RNFT5220 MONITORS DIESEL GENERATOR HX OUTLET FLOW. IT SUPPLIES AN ANALOG INPUT TO THE COMPUTER AND SIGNAL TO 2RNFE5220.

NOTES:

1. Minimum slope requirements cannot be met. Vent impulse line at connections provided on instrument.
2. FITTINGS, TUBINGS, AND VALVES DESIGNATED ON THIS DETAIL BY CLASSIFICATION 6S OF THE FITTINGS CLASSIFICATION LIST ARE SAFETY CLASS. SUBSTITUTES FROM OTHER CLASSIFICATIONS ARE NOT PERMITTED.
3. THE PROCESS CONNECTIONS FOR 2FT5220 & 2FT5230 ARE TO BE INSTALLED ON THE LEFT SIDE. THIS IS AN EXCEPTION TO ICS-A-10 SHEET 50F6 ; NOTE 7.1.6.

NUCLEAR SAFETY RELATED EXCLUSIONS

1. Fittings, Tubings, Piping, & Valves (Not part of a Safety Related Piping System, Etc.)
  - a) None
2. Instruments (Do not serve a Safety Function).
  - a) 2RNFE5220 & 2RNFT5220
  - b) 2RNFE5230 & 2RNFT5230

AS-BUILT  
DATE 7-9-81

QA CONDITION 1  
NUCLEAR SAFETY RELATED

(Except As Excluded Above)

DUKE POWER COMPANY MCGUIRE NUCLEAR STATION UNIT 2					
INSTRUMENT DETAILS DIESEL GEN. HX OUTLET FLOW					
DESIGNER		DATE		DATE	
CRAWFORD		3-22-76		3-22-76	
CHECKED		DATE		DATE	
CRAWFORD		3-22-76		3-22-76	
NO.		REVISIONS		INSPECTED	
NO.	REVISIONS	CHKD	APPR	DATE	REV
6	REV. RANGE PER NSM MG-2-0473				
	REV. O IMP. DATE 3-12-86				
5	Added "AS BUILT" QA Stamp				
4	Added Note 3				
3	Deleted Note 3				
2	Deleted Vent & Rev. Notes				
1	Rel. for Const.				
ORIG.	Preliminary				

SI  
APERTURE  
CARD

FOR INFORMATION  
ONLY

SHTZ  
CU 3 HYDRO



PDR RIDS

8904190 436

