

ITEM NUMBERS

002, 012, 012
SYSTEM

1. VALVE OPENING PRESSURE IS 150 PSIG.
2. LOCAL PUMP INDICATOR FROM COMPARTMENT THROTTLING VALVE IS POSITIVE THROTTLING.
3. CLEANOUT CONNECTION.

VALVE PRESSURE

LINE LISTING	ITEM NO.	DESCRIPTION	CLASS	MATERIAL
05	178	PS16	250P	CS
06	179	PS16	150P	CS
07	180	PS16	150P	CS
08	181	PS16	150P	CS
09	182	PS16	150P	CS

NO.	REVISIONS	DATE	BY	APP'D	REASON

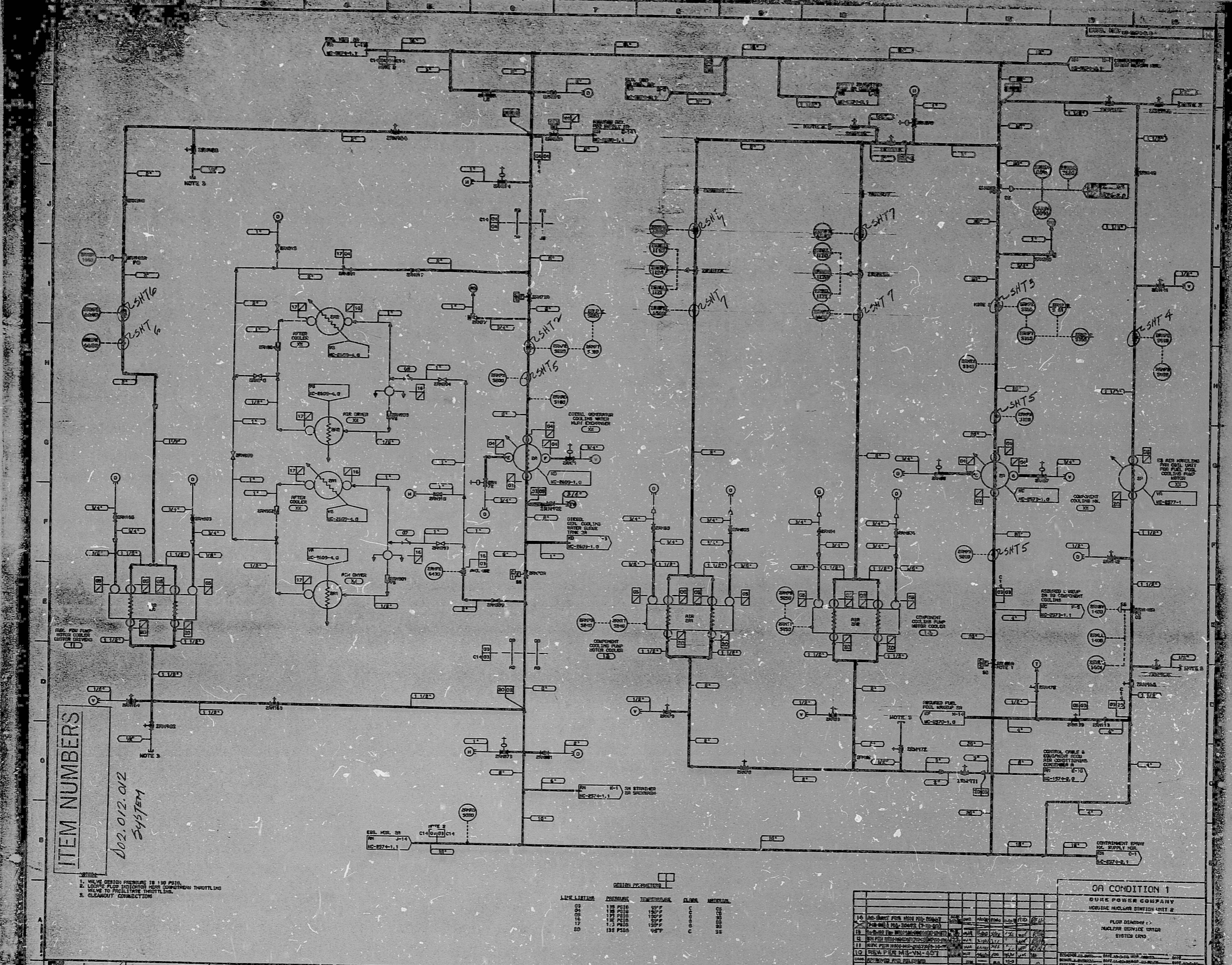
ON CONDITION 1
DUKE POWER COMPANY
MOORE HULLER STATION UNIT 2
FLOW DIRECTION
MATERIAL SERVICE CENTER
SYSTEM CARD

SCALE: 1" = 10'-0"

DWG. NO. UC-2374-9-C

SA
APERTURE
CARD
FOR INFORMATION
ONLY

02.3.14.020
SHT 1



PDR RIDS

8904190437

