

ITEM NUMBERS

DOZ. 012.010
SYSTEM

- NOTES:
1. WEAVE DESIGN PRESSURE IS 150 PSIG.
 2. CLEANOUT CONNECTION
 3. THIS CONNECTION WAS NOT BUILT TO THIS SPEC. HOWEVER IT WAS BUILT TO THE APPLICABLE CODE AT THE TIME OF PURCHASE AS PER APPLICABLE PARAGRAPH IN 4-2.
 4. ALL ELECTRIC MOTOR OPERATED VALVES SHALL BE 15" VALVES UNLESS OTHERWISE SPECIFIED IN 5.
 5. VALVES SHALL BE 15" UNLESS OTHERWISE SPECIFIED IN 5.
 6. PUMP CONNECTIONS AND PUMP CONNECTIONS INTERCONNECTED PROVIDED EACH CONNECTION HAS A SEAL WATER SUPPLY AND A SEAL WATER RETURN CONNECTIONS SHOWN ARE TYPICAL.

DESIGN PARAMETERS

NO.	PRESSURE	TEMPERATURE	CLASS	MATERIAL
01	150 PSIG	90°F	C	CS
02	125 PSIG	70°F	C	CS
03	125 PSIG	100°F	C	CS
04	125 PSIG	150°F	C	CS
05	125 PSIG	150°F	C	CS
06	125 PSIG	150°F	C	CS
07	125 PSIG	150°F	C	CS
08	125 PSIG	150°F	C	CS
09	125 PSIG	150°F	C	CS
10	125 PSIG	150°F	C	CS
11	125 PSIG	150°F	C	CS
12	125 PSIG	150°F	C	CS
13	125 PSIG	150°F	C	CS
14	125 PSIG	150°F	C	CS
15	125 PSIG	150°F	C	CS
16	125 PSIG	150°F	C	CS
17	125 PSIG	150°F	C	CS
18	125 PSIG	150°F	C	CS
19	125 PSIG	150°F	C	CS
20	125 PSIG	150°F	C	CS

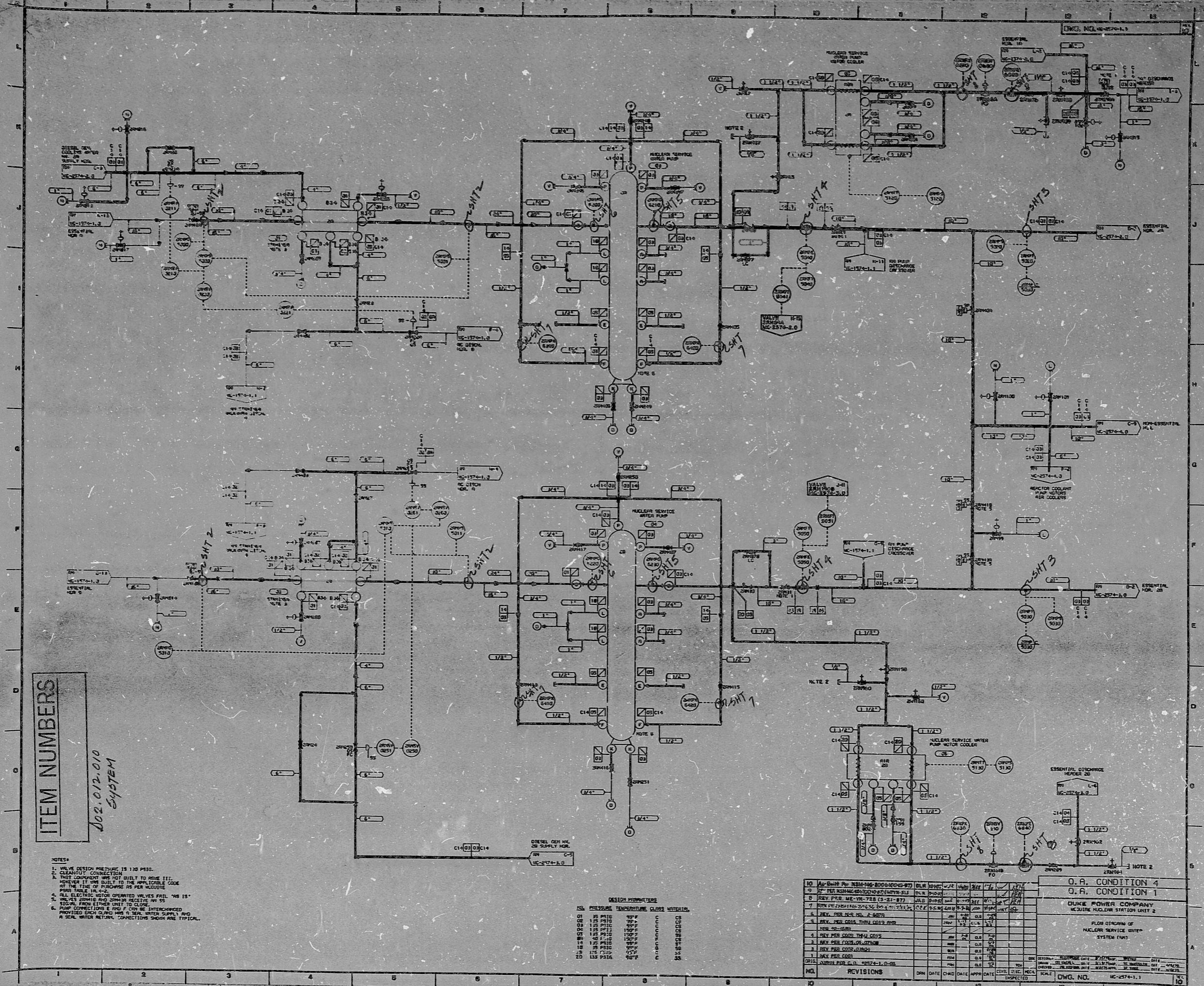
NO.	REVISIONS	DATE	BY	CHKD	DATE	APP'D	DATE	SCALE	INSPECTED
10	As-Built Per NEMA-66-2000-0000-00								
9	REV. PER NEMA-66-2000-0000-00								
8	REV. PER ME-VI-728 (3-21-87)								
7	REV. PER 220-220-220-220-220-220								
6	REV. PER 220-220-220-220-220-220								
5	REV. PER 220-220-220-220-220-220								
4	REV. PER 220-220-220-220-220-220								
3	REV. PER 220-220-220-220-220-220								
2	REV. PER 220-220-220-220-220-220								
1	REV. PER 220-220-220-220-220-220								

O.A. CONDITION 4
O.A. CONDITION 1
DUKE POWER COMPANY
NUCLEAR STATION UNIT 2
PLANT OPERATIONS OF
NUCLEAR SERVICE WATER
SYSTEM (NWS)

SI
APERTURE
CARD

FOR INFORMATION
ONLY

OL.3 HYDRO
SHT 1



PDR RIDS

8904190 381

