

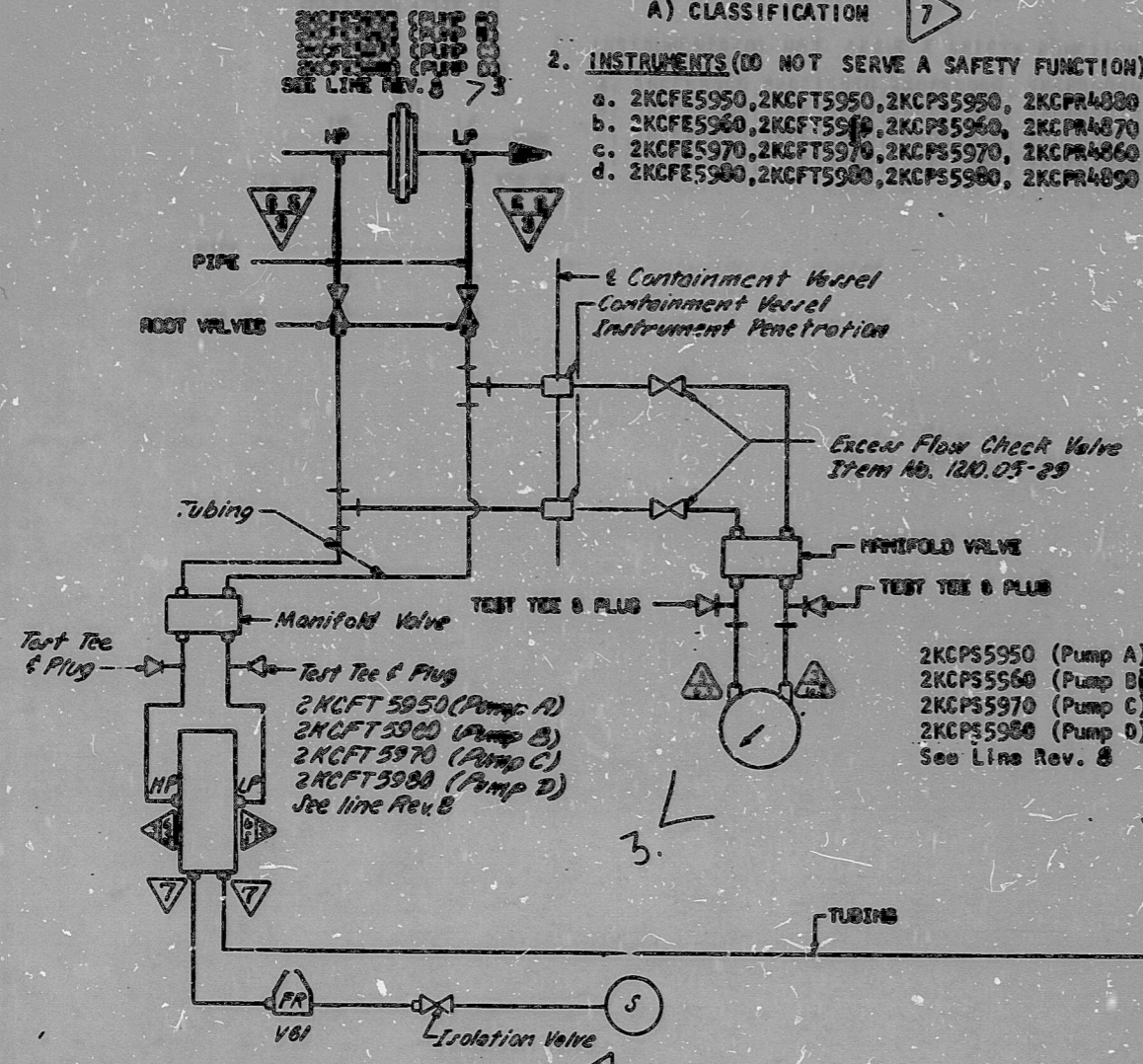
NUCLEAR SAFETY RELATED EXCLUSIONS

1. FITTINGS, TUBINGS, PIPING, & VALVES (NOT PART OF A SAFETY RELATED PIPING SYSTEM, ETC.)

A) CLASSIFICATION

2. INSTRUMENTS (DO NOT SERVE A SAFETY FUNCTION)

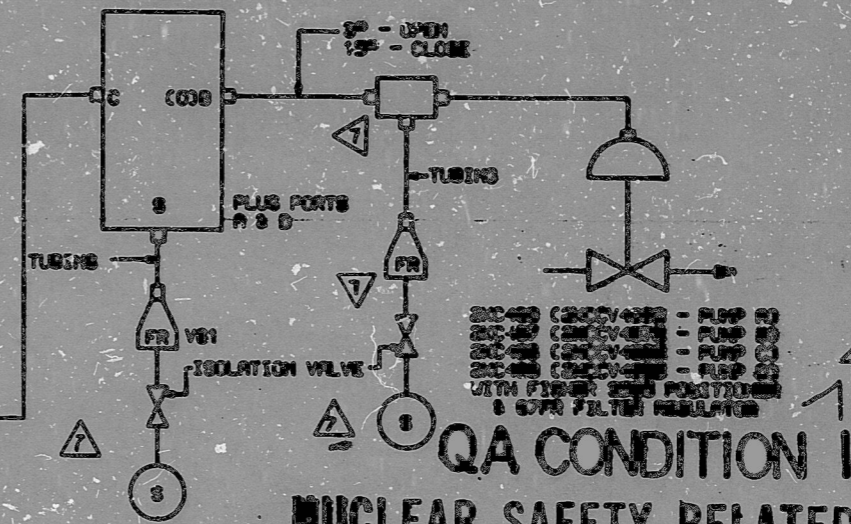
- a. 2KCFE5950, 2KCFT5950, 2KCP55950, 2KCP4880
- b. 2KCFE5960, 2KCFT5960, 2KCP55960, 2KCP4870
- c. 2KCFE5970, 2KCFT5970, 2KCP55970, 2KCP4860
- d. 2KCFE5980, 2KCFT5980, 2KCP55980, 2KCP4890



NOTES:

1. SLOPE IMPULSE LINE DOWNWARD FROM PROCESS TAP TO INSTRUMENT A MINIMUM OF 1/4" PER FOOT. (For flow transmitter only)
2. FITTINGS, TUBINGS, AND VALVES DESIGNATED ON THIS DETAIL BY CLASSIFICATION 6a OF THE FITTINGS CLASSIFICATION LIST ARE SAFETY CLASS. SUBSTITUTES FROM OTHER CLASSIFICATIONS ARE NOT PERMITTED.
3. REFER TO 12-1430-NIS FOR CONTAINMENT VESSEL INSTRUMENT PENETRATION DETAIL.
4. MINIMUM SLOPE REQUIREMENTS CANNOT BE MET FOR PRESSURE SWITCHES. SLOPE IMPULSE LINE DOWN TO A POINT BELOW INSTRUMENT, THRU WALL PENETRATION, THEN UP TO INSTRUMENT. VENT AT TEST TEES.

2KCP55950 (Pump A)
2KCP55960 (Pump B)
2KCP55970 (Pump C)
2KCP55980 (Pump D)
ROOM 380 CONTROLLER
WITHOUT MANUAL STRIKE
ITEM NO. 1210.08-18



FUNCTIONAL DESCRIPTION: (For Pump "A" applies to Others)
2KCFE5950 and 2KCP55950 monitor the outlet flow from the RCP Motor Upper Bearing Cooler. 2KCP55950 is set to provide alarms on high and low flows. 2KCFE5950 provides a signal to 2/KC/488. 2/KC/488 is regulated to maintain the desired setpoint.

AS-BUILT
DATE 9-15-81

DUKE POWER COMPANY MCGUIRE NUCLEAR STATION UNIT 2			
INSTRUMENT DETAILS REACTOR COOLANT PUMP MOTOR UPPER BRG. COOLER OUTLET FLOW CONTROL			
NO.	REVISIONS	CHG	APPR
4	Added Stamps	JAS	W. J. M.
3	Del. FT & RSs Added flow switch & Note 3	JAS	W. J. M.
2	Added Transmitter & Rev Functional Description	JAS	W. J. M.
1	Rel. for Const.	JAS	W. J. M.
0	PRELIMINARY	JAS	W. J. M.

SI
APERTURE
CARD
FOR INFORMATION
ONLY

SHT 2
CL. 3 HYDRO

PDR RIDS

0904180 348

