

11

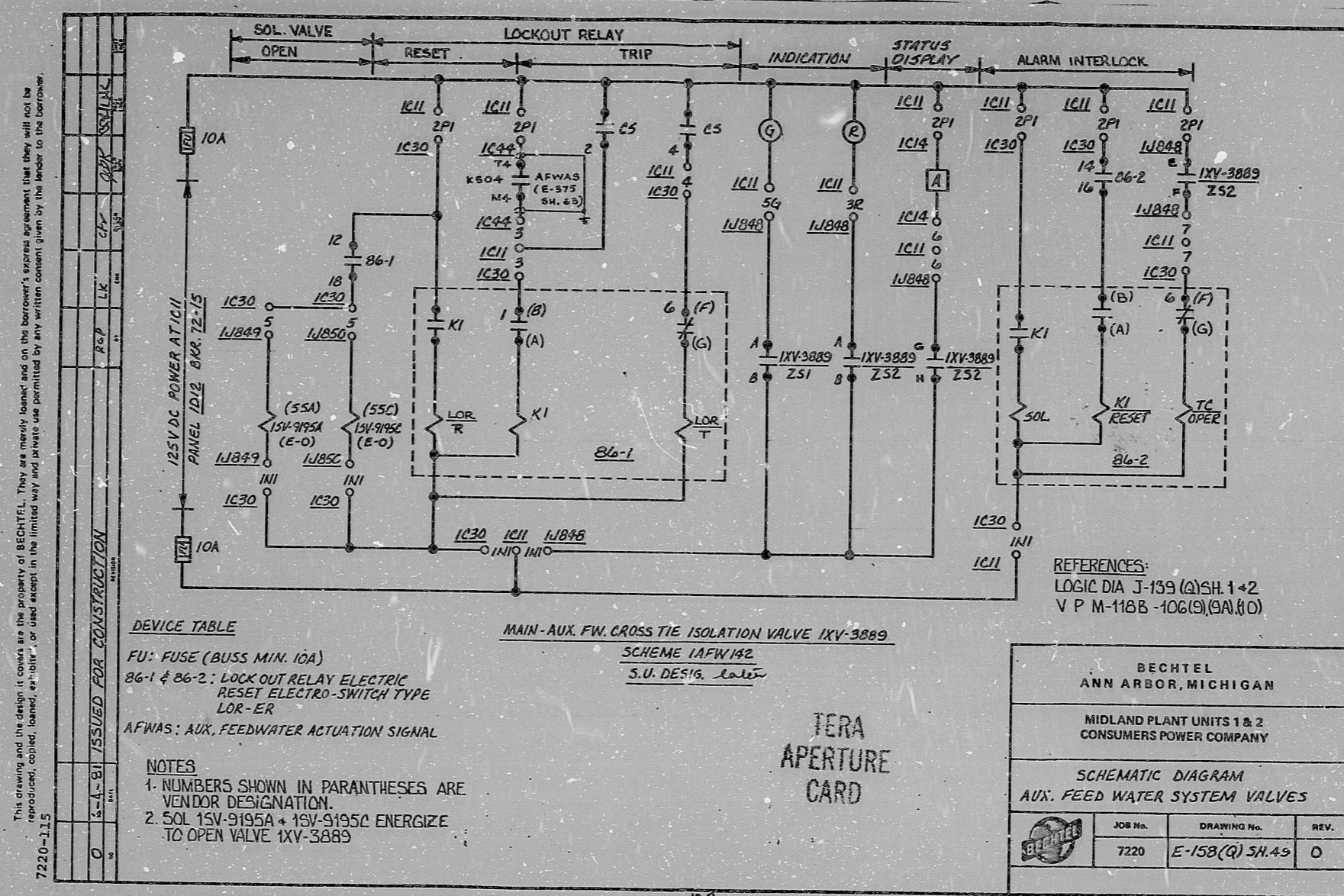
11

8.5

11

11

8.5



This drawing and the design it covers are the property of BECHTEL. They are hereby loaned and on the borrower's express agreement that they will not be reproduced, copied, loaned, or "rented" or used except in the limited way and for the limited purpose permitted by any written consent given by the lender to the borrower.  
 7220-115  
 0  
 1-1-81 ISSUED FOR CONSTRUCTION

**DEVICE TABLE**  
 FU: FUSE (BUSS MIN. 10A)  
 86-1 & 86-2: LOCKOUT RELAY ELECTRIC  
 RESET ELECTRO-SWITCH TYPE  
 LOR-ER  
 AFWAS: AUX. FEEDWATER ACTUATION SIGNAL

MAIN-AUX. FW. CROSS TIE ISOLATION VALVE IXV-3889  
 SCHEME IAFW142  
 S.U. DESIG. DATE

**NOTES**  
 1. NUMBERS SHOWN IN PARANTHESES ARE  
 VENDOR DESIGNATION.  
 2. SOL 15V-9195A + 15V-9195C ENERGIZE  
 TO OPEN VALVE IXV-3889

REFERENCES:  
 LOGIC DIA J-159 (A) SH. 1+2  
 V P M-118B -106(S), (9A), (10)

TERA  
 APERTURE  
 CARD

BECHTEL ANN ARBOR, MICHIGAN		
MIDLAND PLANT UNITS 1 & 2 CONSUMERS POWER COMPANY		
SCHEMATIC DIAGRAM AUX. FEED WATER SYSTEM VALVES		
JOB No.	DRAWING No.	REV.
7220	E-158(Q) SH. 45	0

16X

"I certify that the image contained on this frame  
 was made in the normal and regular course of  
 business, on the data stated below and that it is  
 an accurate reproduction of the document submitted  
 to the contractor for filing, by Bechtel Power  
 Corporation.  
 DATE 10-23-81 P. Casella  
 CAMERA OPERATOR CONTRACTOR'S SUP'VR  
 OR MANAGER

8.5

11

17

8.5

11

17



RIDS

8112230300

