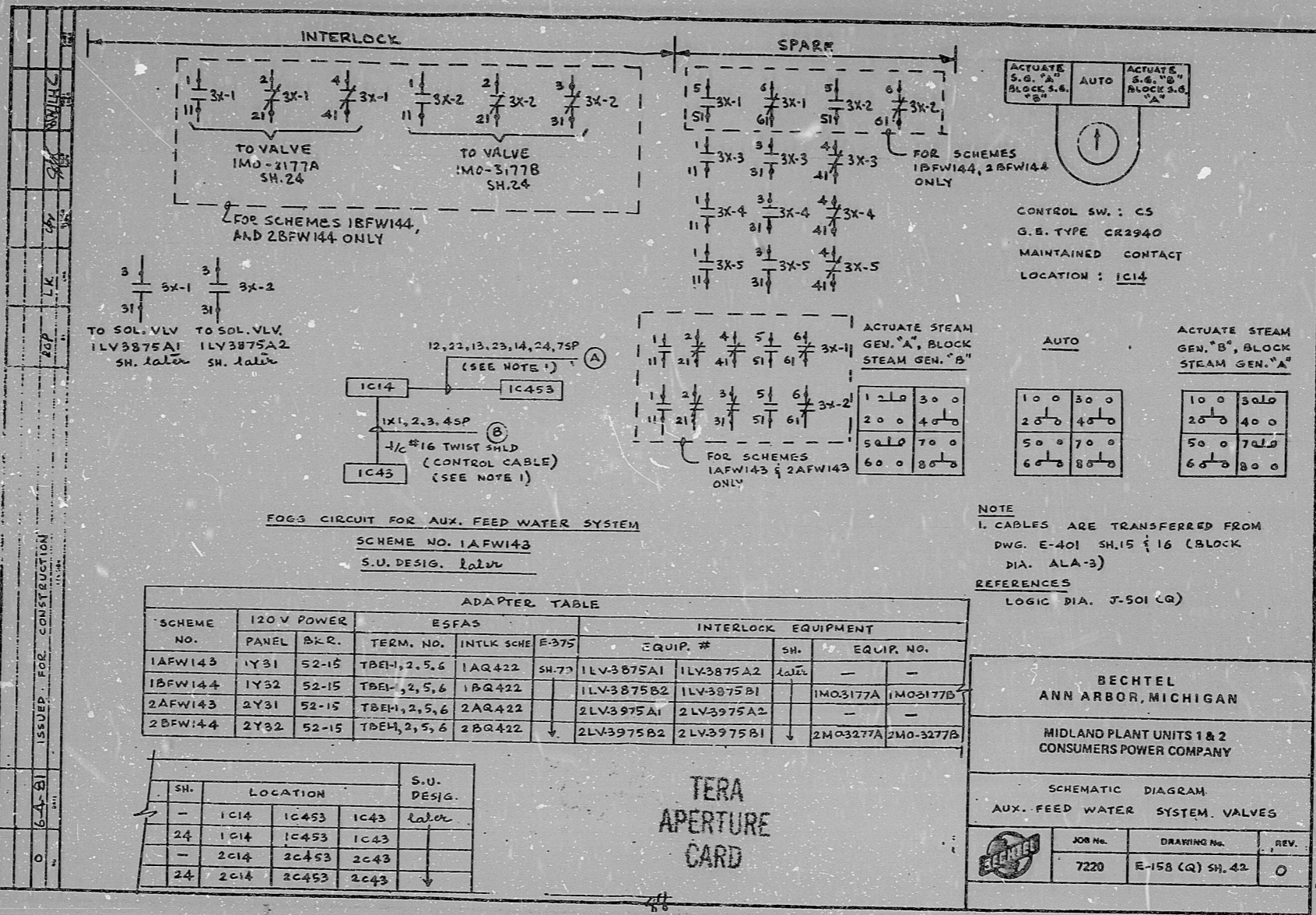


This drawing and the abstract thereof are the property of Bechtel Power Corporation. It is to be used only for the project and site for which it was prepared. It is not to be reproduced, copied, loaned, or otherwise distributed without express written consent given by the lender to the borrower.



ADAPTER TABLE

SCHEME NO.	120V POWER		ESFAS			INTERLOCK EQUIPMENT			
	PANEL	BKR.	TERM. NO.	INTLK SCHE	E-375	EQUIP. #	SH.	EQUIP. NO.	
1AFW143	1Y31	52-15	TBEH-2,5,6	1AQ422	SH-77	1LV3875A1	1LV3875A2	later	-
1BFW144	1Y32	52-15	TBEH-2,5,6	1BQ422		1LV3875B2	1LV3875B1		1M03177A 1M03177B
2AFW143	2Y31	52-15	TBEH-2,5,6	2AQ422		2LV3975A1	2LV3975A2		-
2BFW144	2Y32	52-15	TBEH-2,5,6	2BQ422		2LV3975B2	2LV3975B1		2M03277A 2M0-3277B

SH.	LOCATION			S.U. DESIG.
-	1C14	1C453	1C43	later
24	1C14	1C453	1C43	
-	2C14	2C453	2C43	
24	2C14	2C453	2C43	

NOTE
 1. CABLES ARE TRANSFERRED FROM DWG. E-401 SH.15 & 16 (BLOCK DIA. ALA-3)
 REFERENCES
 LOGIC DIA. J-501 (Q)

BECHTEL
ANN ARBOR, MICHIGAN

MIDLAND PLANT UNITS 1 & 2
CONSUMERS POWER COMPANY

SCHEMATIC DIAGRAM
AUX. FEED WATER SYSTEM VALVES

JOB No.	DRAWING No.	REV.
7220	E-158 (Q) SH. 42	0

TERA
APERTURE
CARD

16X

I certify that the image contained on this frame was made in the normal and regular course of business, on the date stated below and that it is an accurate reproduction of the document submitted to the contractor for filing, by Bechtel Power Corporation.

10-28-81 R. Lapelle J. Alaraz
 DATE CAMERA OPERATOR CONTRACTOR'S SUPERVISOR OR MANAGER

RIDS

8112230291

