

DISTRIBUTION		
SUPPLIER	COPIES	DATE
None		
CLIENT	14-24	
FIELD	M	
ARCH		
CIVIL		
ELECTRICAL		
CON. SYS.		
MECHANICAL		
PLT DES.		
RECORDS		
JOB NO.		
BECHTEL POWER CORPORATION		
San Francisco		

MAR 2, 78

GENERAL DRAWING REVIEW

COMMENTS AS CHECKED BELOW:

A No comments.

B Comments as indicated, for NED's information and use only. No replotting.

C Comments as indicated, when directly affecting Bechtel responsibility. Reply, required if not incorporated by NED.

FORWARDED BY: *Ron...* DATE: *3/2/78*

Reviewed: *A C E J M P*

BECHTEL POWER CORPORATION SAN FRANCISCO JOB NO. 10256

SEE FIRST SHEET FOR STANDARD DISTRIBUTION

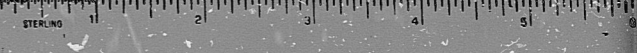
BECHTEL POWER CORPORATION

SHS

PRO APERTURE CARD

1-51 1030 61-(5)-I

I certify that the microfilm image contained on this microform was made in the normal and regular course of business. This is a true, full, correct and complete reproduction and replacement for and/or in lieu of original documents generated by the Bechtel group of companies.



RIDS

8307280193

