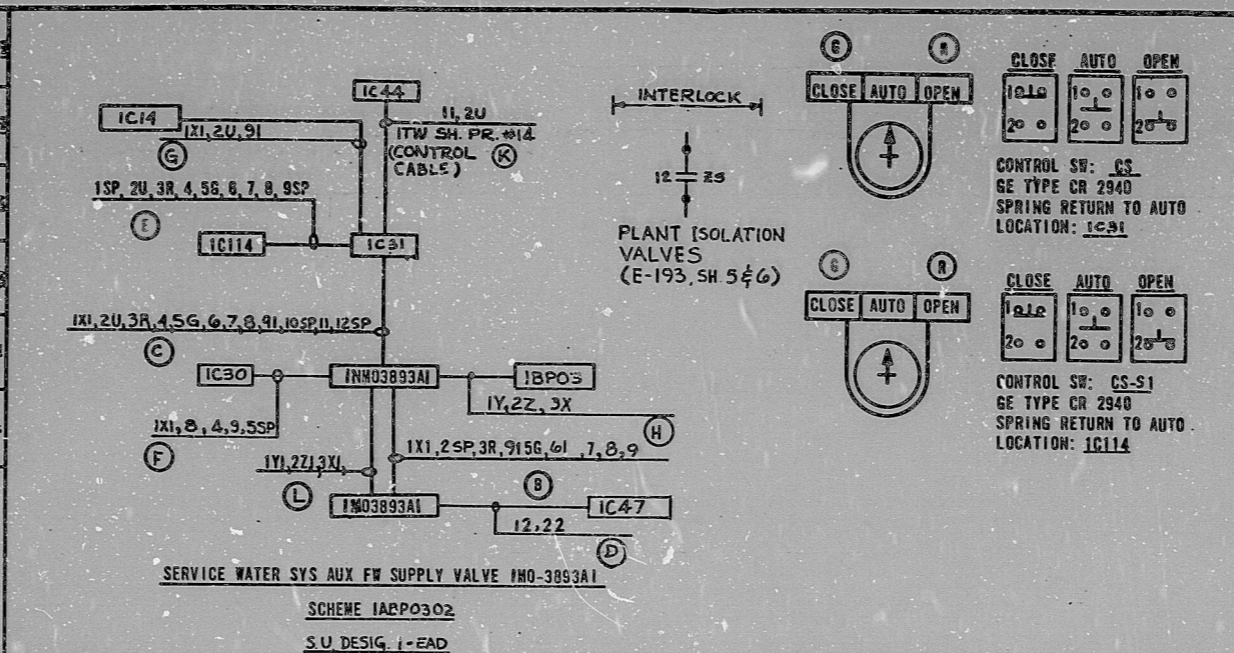


This drawing and the design it covers are the property of BECHTEL. They are hereby loaned to the borrower's exclusive agreement that they will not be reproduced, copied, loaned, exhibited, or used except in the limited way and private use permitted by any written consent given by the lender to the borrower.

5	6-A	1	10-1-81	REVISED ADAPTER TABLE	10-1-81
5	6-A	2	4-20-78	ISSUED FOR CONSTRUCTION	4-20-78



ADAPTER TABLE

VALVE No	SCHEME No	AFWAS RELAY	3X RELAY		LOCATION
			DWG No	CONTACTS SCHEME	
1M0-3893A1	1ABP0302	503	53, 23	5-6, 7-8	1AFW127
1M0-3893A2	1ABP0303	506	63	9-10, 11-12	1AFW127
1M0-3893B1	1BPO402	503	70	5-6, 7-8	1BFW128
1M0-3893B2	1BPO403	506	70	9-10, 11-12	1BFW128
2M0-3993A1	2ABP0302	503	67	5-6, 7-8	2AFW127
2M0-3993A2	2ABP0303	506	67	9-10, 11-12	2AFW127
2M0-3993B1	2BPO402	503	74	5-6, 7-8	2BFW128
2M0-3993B2	2BPO403	506	74	9-10, 11-12	2BFW128

CONT'D				H.P.	S.U. DESIG.	CONT. SWG AUX. SWIT. PNL.
IC114	IC14	IC44	IC47			
IC114	IC14	IC44	IC47	0.7	1-EAD	CS-51
IC114	IC14	IC44	IC47	0.7	1-EAD	CS-51
IC114	IC14	IC44	IC47	0.25	1-EAD	CS-51
IC114	IC14	IC44	IC47	0.35	1-EAD	CS-51
2C114	2C14	2C44	2C47	0.7	2-EAD	CS-52
2C114	2C14	2C44	2C47	0.35	2-EAD	CS-52
2C114	2C14	2C44	2C47	0.35	2-EAD	CS-52

VALVE ZS DEVELOPMENT

ROTOR	CONT NO.	VALVE POSITION		
		CLOSE	INTER	OPEN
1	1			
	2			
	3			
	4			
	5			
2	6			
	7			
	8			
	9			
	10			
3	11			
	12			
	13			
	14			
	15			
4	16			
	17			
	18			

\* DENOTES SPARE

TERA APERTURE CARD

BECHTEL  
ANN ARBOR, MICHIGAN

MIDLAND PLANT UNITS 1 & 2  
CONSUMERS POWER COMPANY

SCHEMATIC DIAGRAM  
AUX FEEDWATER SYSTEM VALVES

JOB No.	DRAWING No.	REV.
7220	E-158(0) SH 17	6

16X

I certify that the image contained on this frame was made in the normal and regular course of business, on the date stated below and that it is an accurate reproduction of the document submitted to the contractor for filming, by Bechtel Power Corporation.

DATE: 10-28-81  
 CAMERA OPERATOR: P. Capello  
 CONTRACTOR'S SUPERVISOR OR MANAGER: [Signature]

RIDS

8112230261

