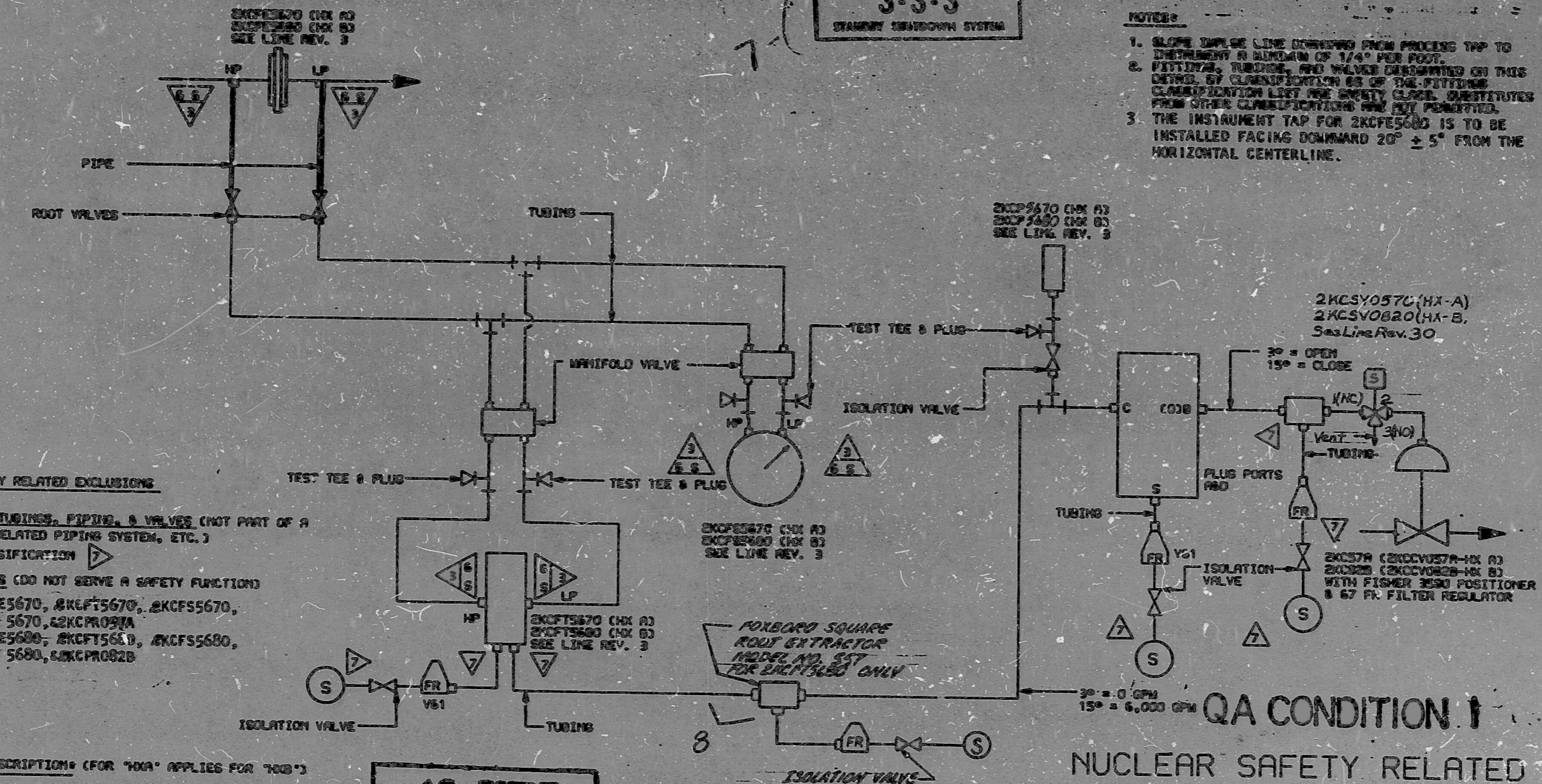


S-S-S
STANDBY SHUTDOWN SYSTEM



- NOTES:**
1. SLOPE IMPOSE LINE DERIVED FROM PROCESS TAP TO INSTRUMENT A SLOPE OF 1/4" PER FOOT.
 2. FITTINGS, TUBING, AND VALVES INDICATED ON THIS DETAIL BY CLASSIFICATION OR OF THE FITTINGS CLASSIFICATION LIST ARE SAFETY CLASS. SUBSTITUTES FROM OTHER CLASSIFICATIONS ARE NOT PERMITTED.
 3. THE INSTRUMENT TAP FOR 2KCF5680 IS TO BE INSTALLED FACING DOWNWARD 20° ± 5° FROM THE HORIZONTAL CENTERLINE.

NUCLEAR SAFETY RELATED EXCLUSIONS

1. FITTINGS, TUBING, PIPING, & VALVES (NOT PART OF A SAFETY RELATED PIPING SYSTEM, ETC.)
a) CLASSIFICATION
2. INSTRUMENTS (DO NOT SERVE A SAFETY FUNCTION)
A) 2KCF5670, 2KCF5670, 2KCF5670, 2KCF 5670, 2KCF5670
B) 2KCF5680, 2KCF5680, 2KCF5680, 2KCF 5680, 2KCF5680

FUNCTIONAL DESCRIPTION (FOR "HQA" APPLIES FOR "HQB")

2KCF5670 MONITORS REHEATER HEAT EXCHANGER OUTLET FLOW CONTROL. SUPPLIES A SIGNAL TO 2KCF5670 AND CONTROLS 2/KC/57A. 2KCF5670 IS SET TO ALARM ON BOTH HIGH AND LOW FLOW. 2KCF5670 PROVIDES REMOTE INDICATION. 2KCSV0570 IS DE-ENERGIZED BY A S_s SIGNAL TO OPEN 2/KC/57A AND IS MANUALLY EN-ENERGIZED TO RESET.

AS-BUILT
DATE 9-15-81

Rev. #4 AS Per V# 20,401, N5EAB-045
Rev. #3 AS Per V# 20,843

NO.	REVISIONS	DATE	BY	CHKD	APPD
8	ADDED SQ. ROOT EXTRACTOR PER A/E - V# 906				
7	ADDED S.S.S. STAMP				
6	ADD "AS BUILT"				
5	REV. INSTR. NUMBERS				
4	ADDED S.V.'S				
3	ADDED HOLE NO. 3				
2	REV. FR. DESIGN AS NOTED				
1	REV. INSTR. NUMBERS				

QA CONDITION 1
NUCLEAR SAFETY RELATED
(EXCEPT AS EXCLUDED ABOVE)

DUKE POWER COMPANY MCGUIRE NUCLEAR STATION UNIT 2			
INSTRUMENT DETAILS RHR HX OUTLET FLOW CONTROL			
SCALE	DWG. NO. MC-2493-KC22	REV.	2

SI
APERTURE
CARD

FOR INFORMATION ONLY

CL.3 Hydro SKT3

PDR RIDS

8904180278

