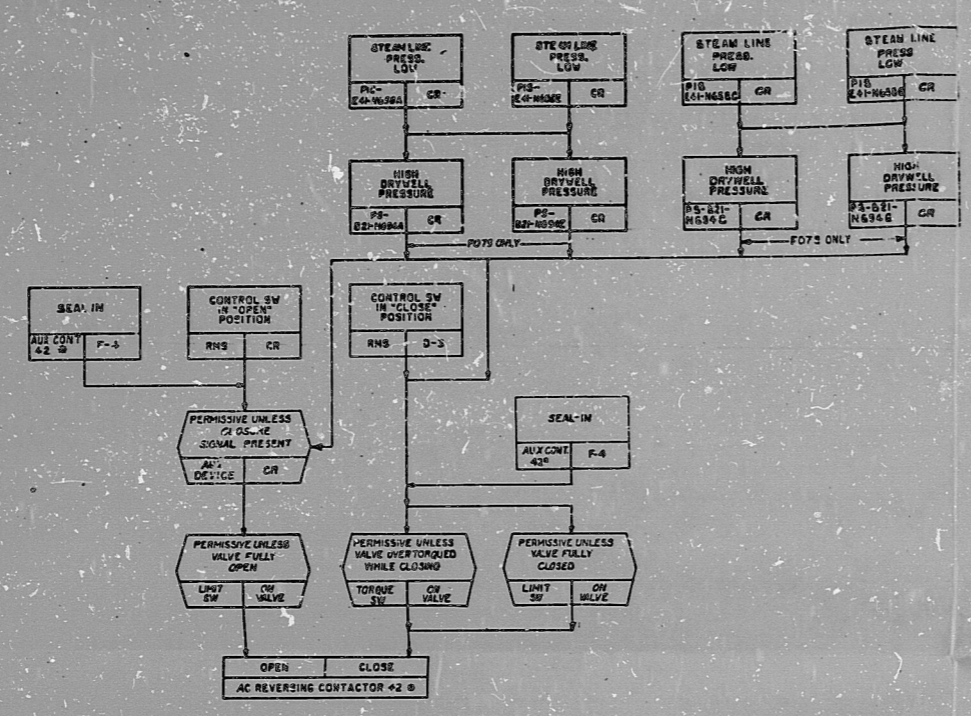


GENERAL ELECTRIC 729E627AC
 HIGH PRESSURE COOLANT INJECTION SYS



TURBINE EXHAUST LINE
 VACUUM BREAKER ISOLATION VALVE POS (OUTBOARD)
 TYPICAL FOR VALVE F079 (NBD40M)

DISTRIBUTION	
SUPPLIER	DATE
CLIENT	1/2/88
ARCH	1/2/88
CIVIL	
ELECTRICAL	
COAL SYS	
MECHANICAL	
PLT DES	
RECORD	

3-17-1988

CE/NEED DRAWING REVIEW

COMMENTS AS CHECKED BELOW

A No comments.

B Comments as indicated, for NED's information and use only. No reply required.

C Comments as indicated, when directly affecting Bechtel's responsibility. Reply required if not incorporated by NED.

FORWARDED BY: Ron M. [Signature] DATE: 3/17/88

REVIEWED BY: A. C. [Signature] DATE: 3/17/88

BECHTEL POWER CORPORATION SAN FRANCISCO JOB NO. 10858

PRC APERTURE CARD

1 E41 1030 64 6 1

NO.	DATE	BY	CHK.
1	3-17-88	AM	
2			
3			
4			
5			

I certify that the microfilm image contained on this microform was made in the normal and regular course of business. This is a true, full, correct and complete reproduction and replacement for and/or in lieu of original documents generated by the Bechtel group of companies.

RIDS

8307280/57

