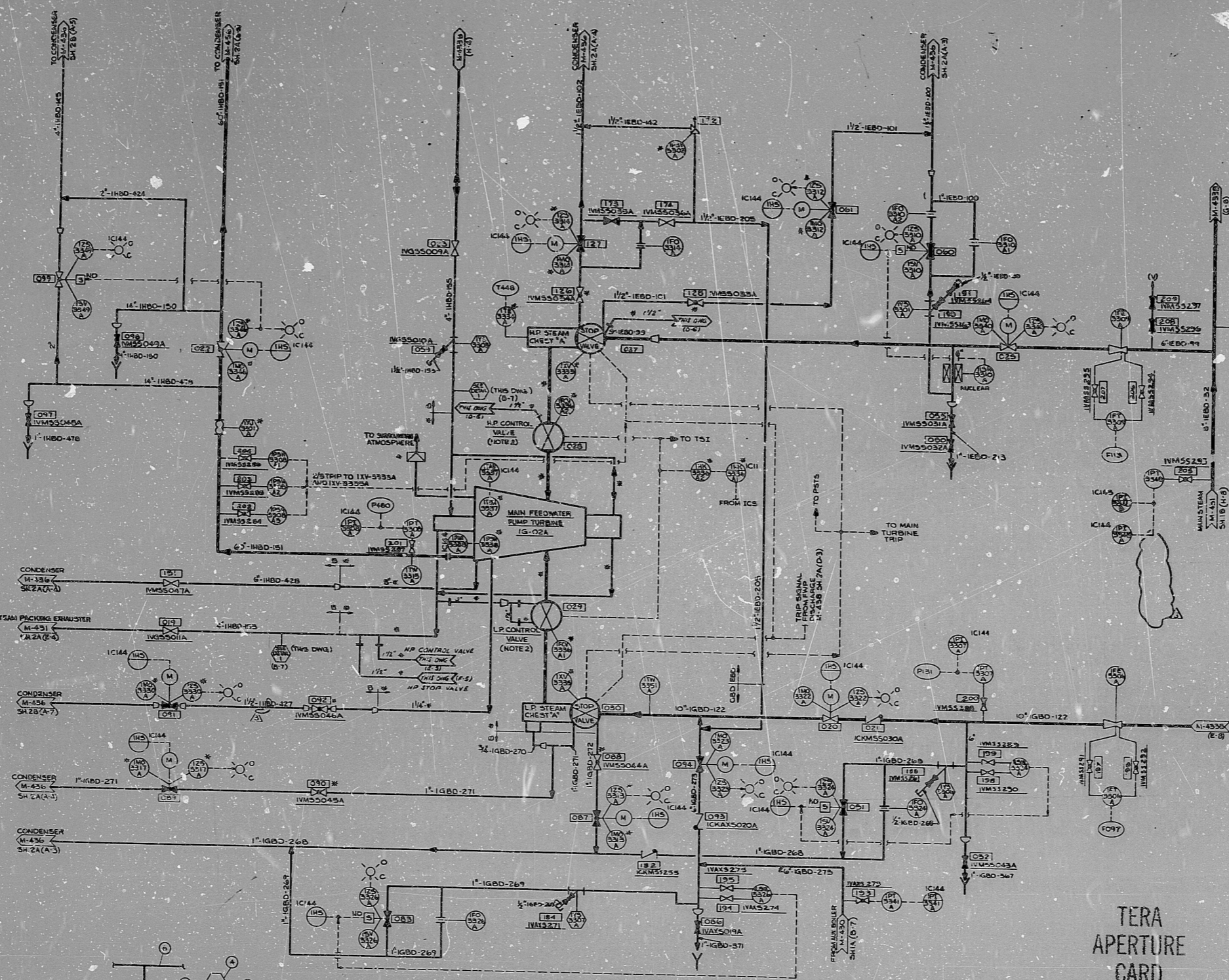


M-433A

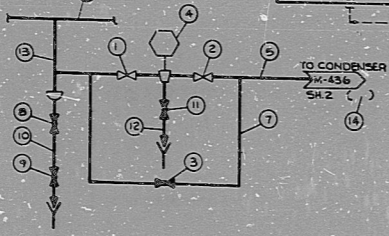
SIZE E



- NOTES:
1. STEAM TRAPS ARE FURNISHED WITH INTEGRAL BLOWDOWN VALVES.
 2. THE HP AND LP CONTROL VALVES ARE CONTROLLED BY A COMMON MECHANICAL LINKAGE.
 3. WHERE NOTED PIPING IN DETAIL NOT SHOWN OF STEAM TRAP (S) AND VALVE (V) AND (S) LINE CRITICAL AND SHALL MAINLINE LINE NUMBER (S).
 4. DUE TO SYSTEM COMPLEXITY ELECTRICAL INTERCONNECTIONS FOR VENDOR SUPPLIED EQUIPMENT AND CONTROLS ARE NOT ALL SHOWN. FOR MORE INFORMATION REFER TO VP M-433-1.

30X

TERA APERTURE CARD



DETAIL NO. 1

DRG NO.	LOCATION	1	2	3	4	5	6	7	8	9	10	11	12	13	14	15
THIS DNG	F-1	151	152	153	154	155	156	157	158	159	160	161	162	163	164	165
THIS DNG	D-1	166	167	168	169	170	171	172	173	174	175	176	177	178	179	180
THIS DNG	F-2	181	182	183	184	185	186	187	188	189	190	191	192	193	194	195
M-433B	C-6	196	197	198	199	200	201	202	203	204	205	206	207	208	209	210
M-433B	C-8	211	212	213	214	215	216	217	218	219	220	221	222	223	224	225
M-433B	D-4	226	227	228	229	230	231	232	233	234	235	236	237	238	239	240
M-433B	F-4	241	242	243	244	245	246	247	248	249	250	251	252	253	254	255
M-433B	E-3	256	257	258	259	260	261	262	263	264	265	266	267	268	269	270
M-433B	C-4	271	272	273	274	275	276	277	278	279	280	281	282	283	284	285

POOR ORIGINAL

REV.	DATE	DESCRIPTION	BY	CHKD.
1		ISSUED FOR CONSTRUCTION		
2		REVISED AS NOTED		
3		REVISED AS NOTED		
4		REVISED AS NOTED		
5		REVISED AS NOTED		

BECHTEL
ANN ARBOR, MICHIGAN

MIDLAND PLANT UNITS 1 & 2
CONSUMERS POWER COMPANY

PIPING & INSTRUMENT DIAGRAM
AUXILIARY STEAM UNIT-1

JOB NO.	DRAWING NO.	REV.
7220	M-433A	3

8.5"
11"
17"

8.5"
11"
17"

RIDS

8112230180

