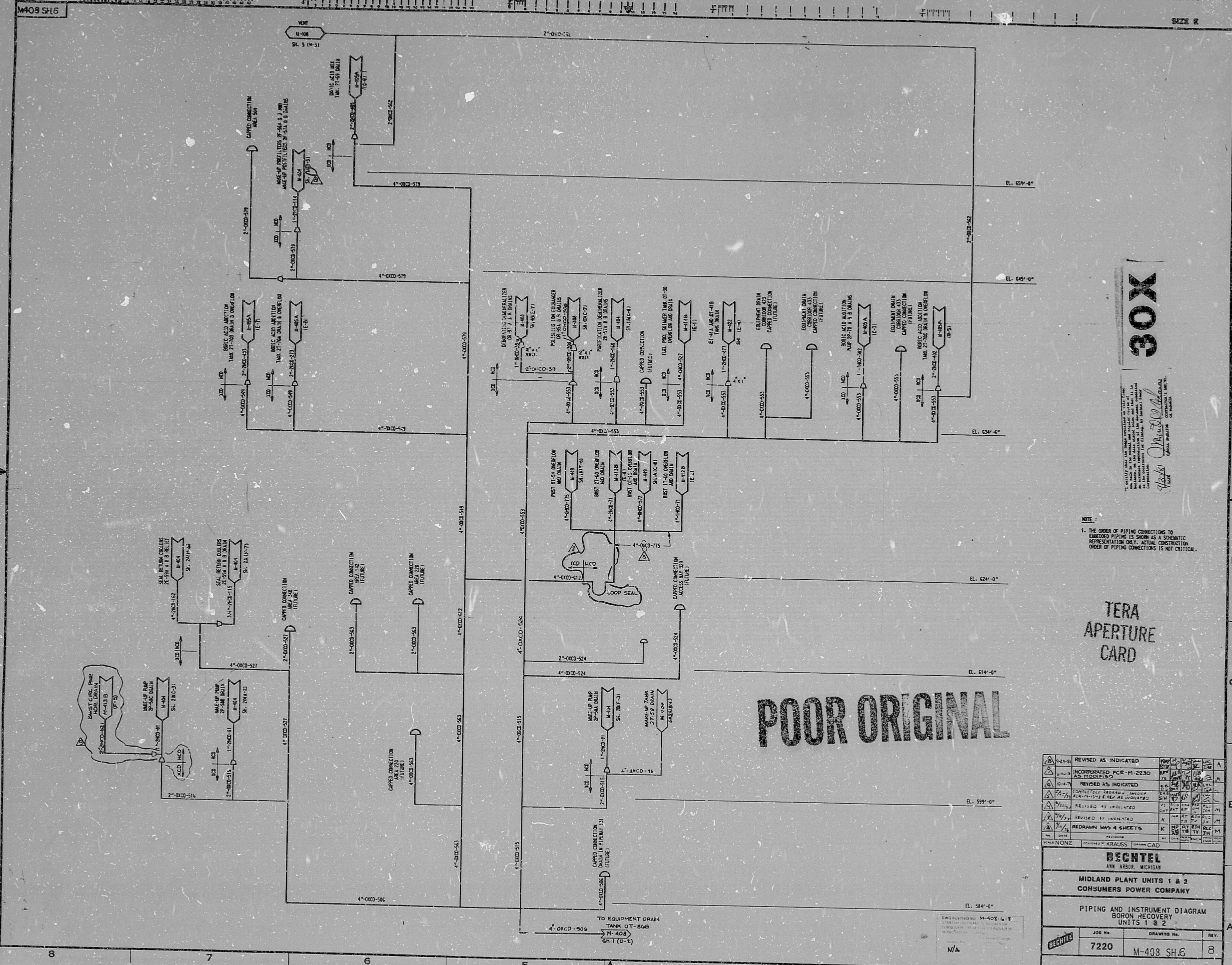


17" 11" 8.5" 8.5" 17"

This drawing shall be stamped as a condition of contract. It is the responsibility of the contractor to verify the accuracy of the information shown on this drawing. The contractor shall be responsible for any errors or omissions in this drawing.



POOR ORIGINAL

30X

NOTE:
1. THE ORDER OF PIPING CONNECTIONS TO
EQUIPPED PIPING IS SHOWN AS A SCHEMATIC
REPRESENTATION ONLY. ACTUAL CONSTRUCTION
ORDER OF PIPING CONNECTIONS IS NOT CRITICAL.

TERA
APERTURE
CARD

REVISION	REVISION AS INDICATED	DATE	BY
1	REVISION AS INDICATED	11/11/88	WJ
2	REVISION AS INDICATED	11/11/88	WJ
3	REVISION AS INDICATED	11/11/88	WJ
4	REVISION AS INDICATED	11/11/88	WJ
5	REVISION AS INDICATED	11/11/88	WJ
6	REVISION AS INDICATED	11/11/88	WJ
7	REVISION AS INDICATED	11/11/88	WJ
8	REVISION AS INDICATED	11/11/88	WJ
9	REVISION AS INDICATED	11/11/88	WJ
10	REVISION AS INDICATED	11/11/88	WJ
11	REVISION AS INDICATED	11/11/88	WJ
12	REVISION AS INDICATED	11/11/88	WJ
13	REVISION AS INDICATED	11/11/88	WJ
14	REVISION AS INDICATED	11/11/88	WJ
15	REVISION AS INDICATED	11/11/88	WJ
16	REVISION AS INDICATED	11/11/88	WJ
17	REVISION AS INDICATED	11/11/88	WJ
18	REVISION AS INDICATED	11/11/88	WJ
19	REVISION AS INDICATED	11/11/88	WJ
20	REVISION AS INDICATED	11/11/88	WJ
21	REVISION AS INDICATED	11/11/88	WJ
22	REVISION AS INDICATED	11/11/88	WJ
23	REVISION AS INDICATED	11/11/88	WJ
24	REVISION AS INDICATED	11/11/88	WJ
25	REVISION AS INDICATED	11/11/88	WJ
26	REVISION AS INDICATED	11/11/88	WJ
27	REVISION AS INDICATED	11/11/88	WJ
28	REVISION AS INDICATED	11/11/88	WJ
29	REVISION AS INDICATED	11/11/88	WJ
30	REVISION AS INDICATED	11/11/88	WJ
31	REVISION AS INDICATED	11/11/88	WJ
32	REVISION AS INDICATED	11/11/88	WJ
33	REVISION AS INDICATED	11/11/88	WJ
34	REVISION AS INDICATED	11/11/88	WJ
35	REVISION AS INDICATED	11/11/88	WJ
36	REVISION AS INDICATED	11/11/88	WJ
37	REVISION AS INDICATED	11/11/88	WJ
38	REVISION AS INDICATED	11/11/88	WJ
39	REVISION AS INDICATED	11/11/88	WJ
40	REVISION AS INDICATED	11/11/88	WJ
41	REVISION AS INDICATED	11/11/88	WJ
42	REVISION AS INDICATED	11/11/88	WJ
43	REVISION AS INDICATED	11/11/88	WJ
44	REVISION AS INDICATED	11/11/88	WJ
45	REVISION AS INDICATED	11/11/88	WJ
46	REVISION AS INDICATED	11/11/88	WJ
47	REVISION AS INDICATED	11/11/88	WJ
48	REVISION AS INDICATED	11/11/88	WJ
49	REVISION AS INDICATED	11/11/88	WJ
50	REVISION AS INDICATED	11/11/88	WJ
51	REVISION AS INDICATED	11/11/88	WJ
52	REVISION AS INDICATED	11/11/88	WJ
53	REVISION AS INDICATED	11/11/88	WJ
54	REVISION AS INDICATED	11/11/88	WJ
55	REVISION AS INDICATED	11/11/88	WJ
56	REVISION AS INDICATED	11/11/88	WJ
57	REVISION AS INDICATED	11/11/88	WJ
58	REVISION AS INDICATED	11/11/88	WJ
59	REVISION AS INDICATED	11/11/88	WJ
60	REVISION AS INDICATED	11/11/88	WJ
61	REVISION AS INDICATED	11/11/88	WJ
62	REVISION AS INDICATED	11/11/88	WJ
63	REVISION AS INDICATED	11/11/88	WJ
64	REVISION AS INDICATED	11/11/88	WJ
65	REVISION AS INDICATED	11/11/88	WJ
66	REVISION AS INDICATED	11/11/88	WJ
67	REVISION AS INDICATED	11/11/88	WJ
68	REVISION AS INDICATED	11/11/88	WJ
69	REVISION AS INDICATED	11/11/88	WJ
70	REVISION AS INDICATED	11/11/88	WJ
71	REVISION AS INDICATED	11/11/88	WJ
72	REVISION AS INDICATED	11/11/88	WJ
73	REVISION AS INDICATED	11/11/88	WJ
74	REVISION AS INDICATED	11/11/88	WJ
75	REVISION AS INDICATED	11/11/88	WJ
76	REVISION AS INDICATED	11/11/88	WJ
77	REVISION AS INDICATED	11/11/88	WJ
78	REVISION AS INDICATED	11/11/88	WJ
79	REVISION AS INDICATED	11/11/88	WJ
80	REVISION AS INDICATED	11/11/88	WJ
81	REVISION AS INDICATED	11/11/88	WJ
82	REVISION AS INDICATED	11/11/88	WJ
83	REVISION AS INDICATED	11/11/88	WJ
84	REVISION AS INDICATED	11/11/88	WJ
85	REVISION AS INDICATED	11/11/88	WJ
86	REVISION AS INDICATED	11/11/88	WJ
87	REVISION AS INDICATED	11/11/88	WJ
88	REVISION AS INDICATED	11/11/88	WJ
89	REVISION AS INDICATED	11/11/88	WJ
90	REVISION AS INDICATED	11/11/88	WJ
91	REVISION AS INDICATED	11/11/88	WJ
92	REVISION AS INDICATED	11/11/88	WJ
93	REVISION AS INDICATED	11/11/88	WJ
94	REVISION AS INDICATED	11/11/88	WJ
95	REVISION AS INDICATED	11/11/88	WJ
96	REVISION AS INDICATED	11/11/88	WJ
97	REVISION AS INDICATED	11/11/88	WJ
98	REVISION AS INDICATED	11/11/88	WJ
99	REVISION AS INDICATED	11/11/88	WJ
100	REVISION AS INDICATED	11/11/88	WJ

BECHTEL
AMT ARBOR MICHIGAN

MIDLAND PLANT UNITS 1 & 2
CONSUMERS POWER COMPANY

PIPING AND INSTRUMENT DIAGRAM
BORON RECOVERY
UNITS 1 & 2

JOB No.	DRAWING No.	REV.
7220	M-408 SH.6	8

RIDS

8112230135

