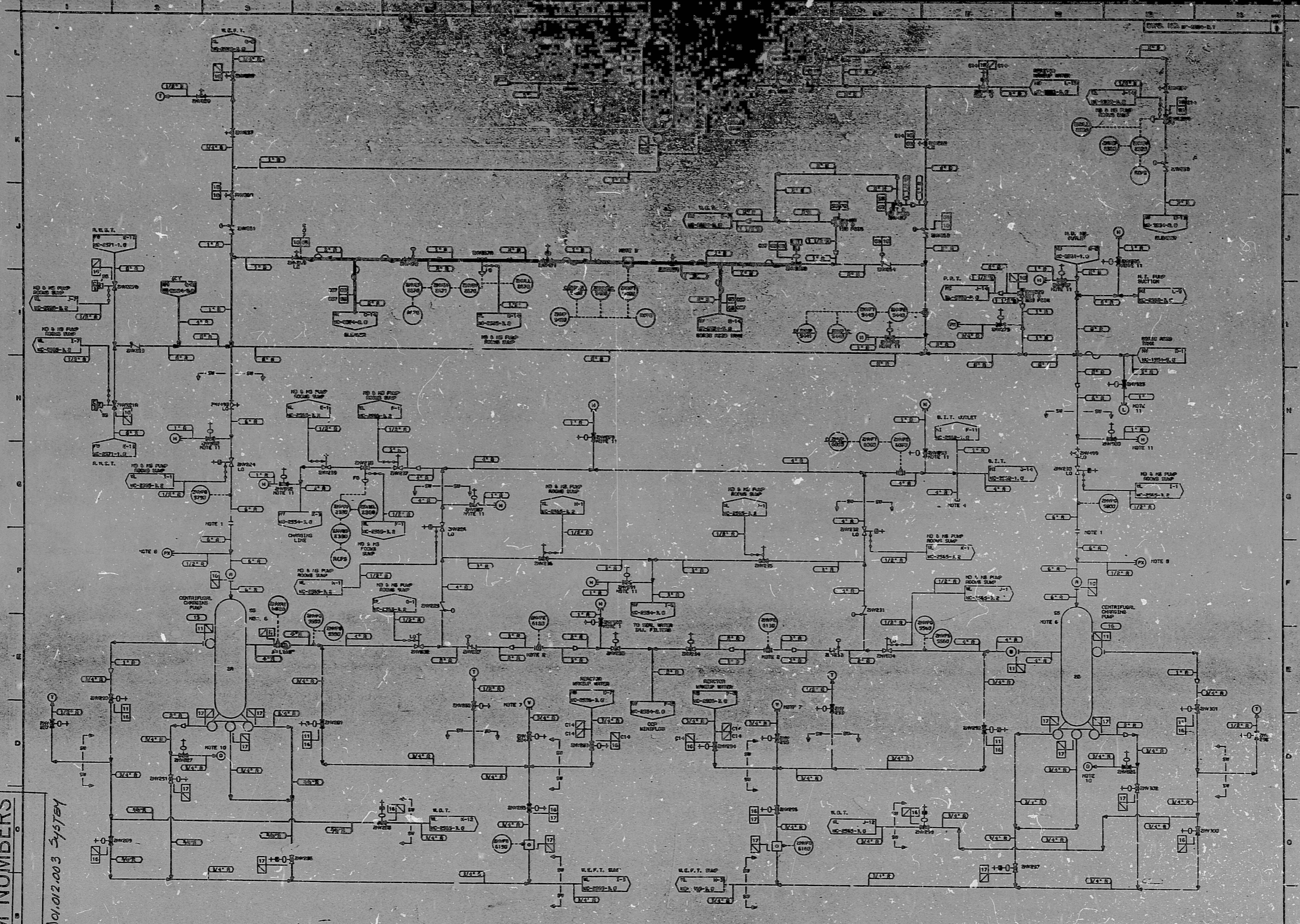


ITEM NUMBERS

001.012.003 System

NOTES

1. TEMPORARY STANCHION IS PLACED IN THE CROSS PIECE DURING INITIAL FLUSHING OPERATIONS. STANCHION MUST BE REMOVED BEFORE PLANT START-UP (BY GAMES).
2. FLOW METERING OF 3 PSI STANCHION MAY NOTED FLOW ORIFICE. MINI-FLOW ORIFICE SUPPLIED BY FINE MANUFACTURER.
3. ELECTROMAGNETIC LOCATE IN VENTILATION PIPE RUN.
4. USE CAREFUL USE OF ALL SYSTEMS.
5. IMPROPER MOUNTING CYCLOIDAL.
6. REFER TO DRAWING MC-255-1.1 & MC-255-1.2 FOR PUMP COUPLING.
7. LOCATE VENT CLOSE TO CEILING AND VENTILATION EXHAUST DUCT, (IF POSSIBLE).
8. PRESSURE TEST CONNECTION TO BE OBTAINED OF STANCHION AND IS ONLY REQUIRED FOR THE TEMPORARY STANCHION.
9. S.P.C. VALVE DURING OPERATIONAL OPERATIONS.
10. LABEL WORK OVERVIEW THE OIL RESERVATION.
11. THIS WORK SHOULD BE COMPLETED AFTER THE SYSTEM IS STRAPPED.



OPERATIONAL DATA

NO.	DESCRIPTION	DATE	STATUS
1	100 PPS	12/20	OPERATIONAL
2	100 PPS	12/20	OPERATIONAL
3	100 PPS	12/20	OPERATIONAL
4	100 PPS	12/20	OPERATIONAL
5	100 PPS	12/20	OPERATIONAL
6	100 PPS	12/20	OPERATIONAL
7	100 PPS	12/20	OPERATIONAL
8	100 PPS	12/20	OPERATIONAL
9	100 PPS	12/20	OPERATIONAL
10	100 PPS	12/20	OPERATIONAL

NO.	REVISIONS	DATE	BY	APP'D	DATE
1					
2					
3					
4					
5					
6					
7					
8					
9					
10					

OR CONDITION 2	
OR CONDITION 1	
DUKE POWER COMPANY	
NUCLEAR FUELS DIVISION UNIT 2	
FLOW DIAGRAM OF CHEMICAL & VOLUME CONTROL SYSTEM (CVS)	
REVISION	DATE
1	12/20/68
2	12/20/68
3	12/20/68
4	12/20/68
5	12/20/68
6	12/20/68
7	12/20/68
8	12/20/68
9	12/20/68
10	12/20/68

SI APERTURE CARD

FOR INFORMATION ONLY

CL-3 Hysko

8904100301

PDR RIDS

