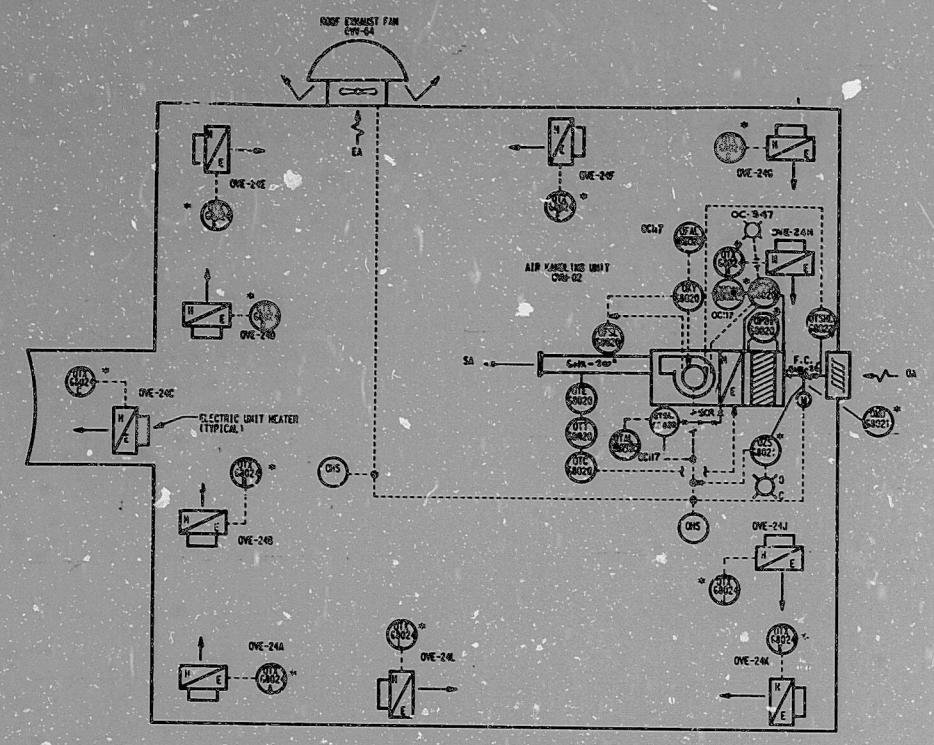
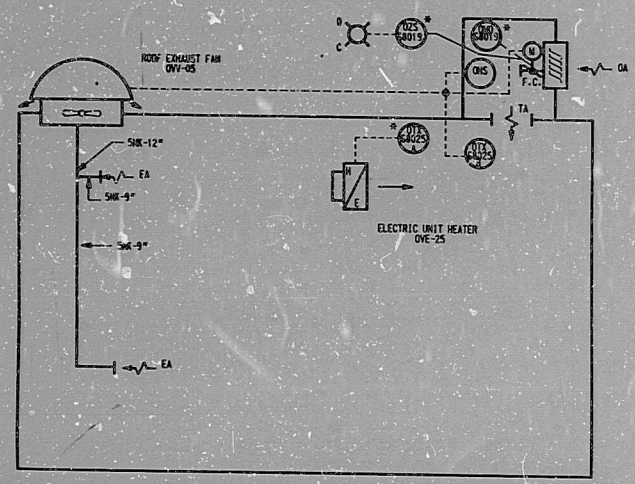


H-468 9A5

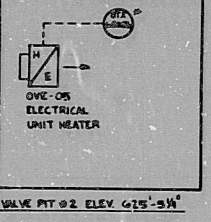
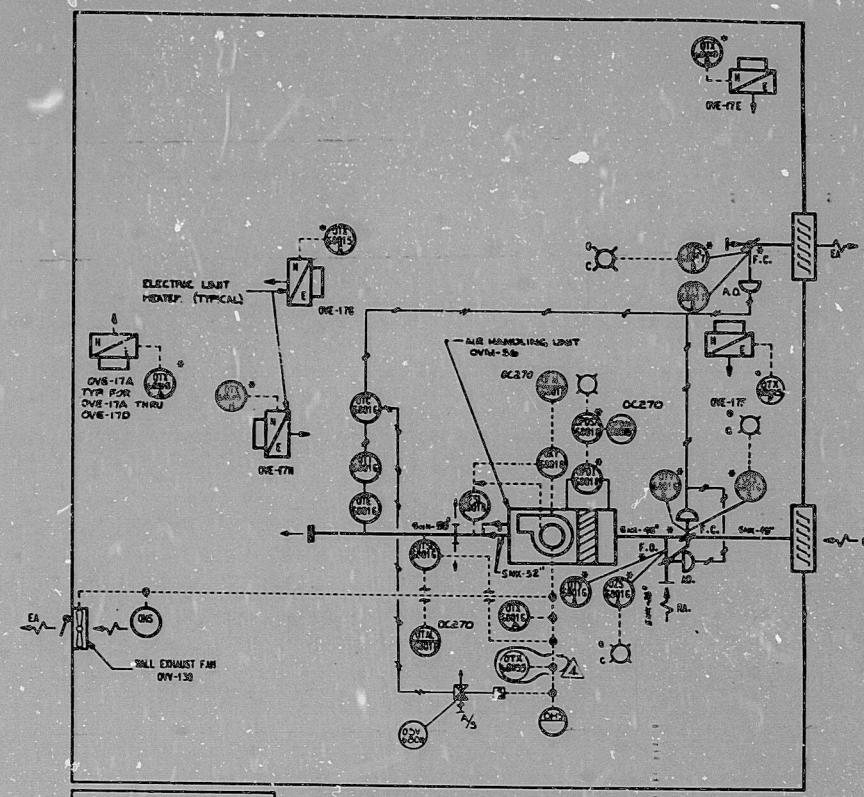
SHEET



OILY WASTE TREATMENT BUILDING-EL. 659'-0"



POND BLOWDOWN DISCHARGE STRUCTURE  
GRADE EL. 604'-0"



OVE-08  
ELECTRICAL  
UNIT HEATER

CONDENSATE RETURN FROM  
DOW PUMP/BLU  
EL. 625'-6"

NOTES:  
1. L.C. ITEMS ARE CONTAINED ONLY  
ON SHEET 1

TERA  
APERTURE  
CARD

30X

Verify that the image captured on this frame  
was made in the normal and regular course of  
business, on the date stated below and that it is  
an accurate reproduction of the document  
submitted to reprographics.

ADD	ADDED THERMOSTAT (REV. 6/68)	BY	...
REV	REVISED AS INDICATED	BY	...
CHG	CHANGED AS INDICATED	BY	...
INC	INCORPORATED NOT IN FIELD AS INDICATED	BY	...
ISS	ISSUED FOR CONSTRUCTION	BY	...

DATE: 10/24/68  
BY: [Signature]  
TITLE: [Title]

**BECHTEL**  
4800 AVENUE, RICHMOND, CALIF.

**MIDLAND PLANT UNITS 1 & 2**  
**CONSUMERS POWER COMPANY**  
PIPING AND INSTRUMENTATION DIAGRAM  
HEATING, VENTILATING & AIR CONDITIONING  
MISCELLANEOUS STRUCT.

NO.	7220	REV.	11-468 SL-5
-----	------	------	-------------

POOR ORIGINAL

This drawing and the data contained hereon are hereby made available to the public in accordance with the provisions of the Freedom of Information Act, 5 U.S.C. 552, and the provisions of the Privacy Act, 5 U.S.C. 552a, and the provisions of the Access to Information Act, R.S.C. 42, and the provisions of the Access to Information Act, R.S.C. 42.

6.5"

8.5"

11"

17"

6.5"

8.5"

11"

17"



RIDS

81/2230080

