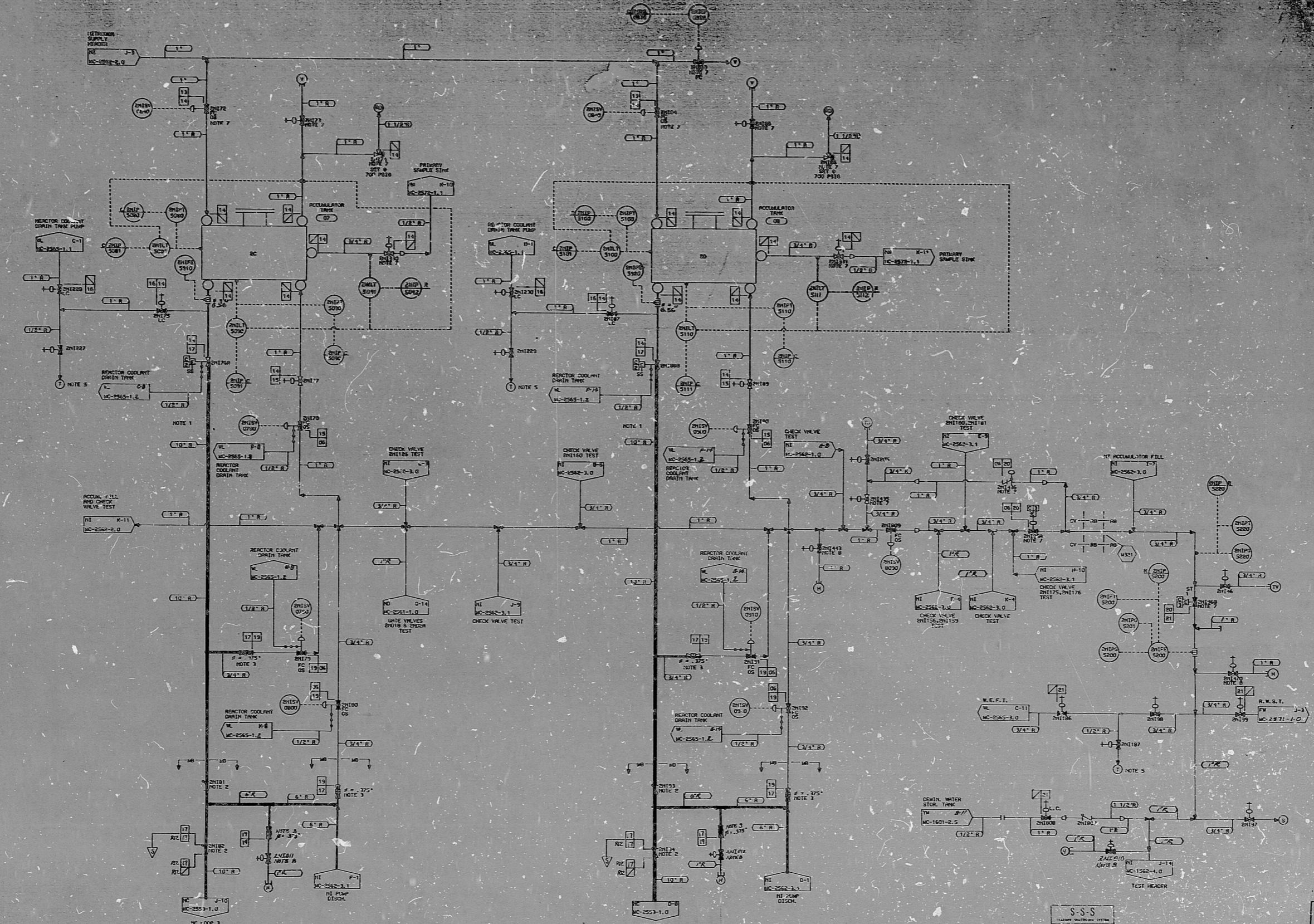


ITEM NUMBERS
 015051010
 SYSTEM



- NOTES
1. PIPING SCHEDULE 140 MUST BE ADHERED TO DUE TO SAFETY. VERIFY FLOW RESTRICTIONS.
 2. LOCATE VALVES AS CLOSE TOGETHER AND AS CLOSE TO REACTOR COOLANT PITTING AS POSSIBLE.
 3. PROVIDE 3/8" ID FLOW RESTRICTION.
 4. RAMPING TELLTALE FOR DRY DRUMS INTO HVD CARRIED VESSEL.
 5. VALVE PROVIDED WITH SOFT SEAT.
 6. WEAR POINTS AND DRUMS SLOD BY CONSTRUCTION FOR PLUG AND HANG.

DESIGN PARAMETERS

NO.	PRESSURE	TEMPERATURE	CLASS	INTERIM
06	1400 PSIG	500°F	G	CS
13	700 PSIG	140°F	G	CS
14	700 PSIG	140°F	G	CS
17	845 PSIG	850°F	B	SS
18	700 PSIG	140°F	G	CS
19	845 PSIG	850°F	B	SS
20	845 PSIG	850°F	B	SS
21	845 PSIG	850°F	B	SS

NO.	REVISIONS	DATE	APP'D	SCALE
1	REV. PER COND. 2	05-14-68		
2	REV. PER COND. 1	05-14-68		
3	REV. PER COND. 1	05-14-68		
4	REV. PER COND. 1	05-14-68		
5	REV. PER COND. 1	05-14-68		
6	REV. PER COND. 1	05-14-68		
7	REV. PER COND. 1	05-14-68		
8	REV. PER COND. 1	05-14-68		
9	REV. PER COND. 1	05-14-68		
10	REV. PER COND. 1	05-14-68		
11	REV. PER COND. 1	05-14-68		
12	REV. PER COND. 1	05-14-68		
13	REV. PER COND. 1	05-14-68		
14	REV. PER COND. 1	05-14-68		

U.S. CONDITION 2
 G.R. CONDITION 1
 DUKE POWER COMPANY
 WOODRIDGE NUCLEAR STATION UNIT 2
 FLOW DIAGRAM OF
 SAFETY - REACTION SYSTEM
 (R1)

FOR INFORMATION ONLY
 SI
 APERTURE
 CARD

CL.1 H420

8904060522

PDR RIDS

