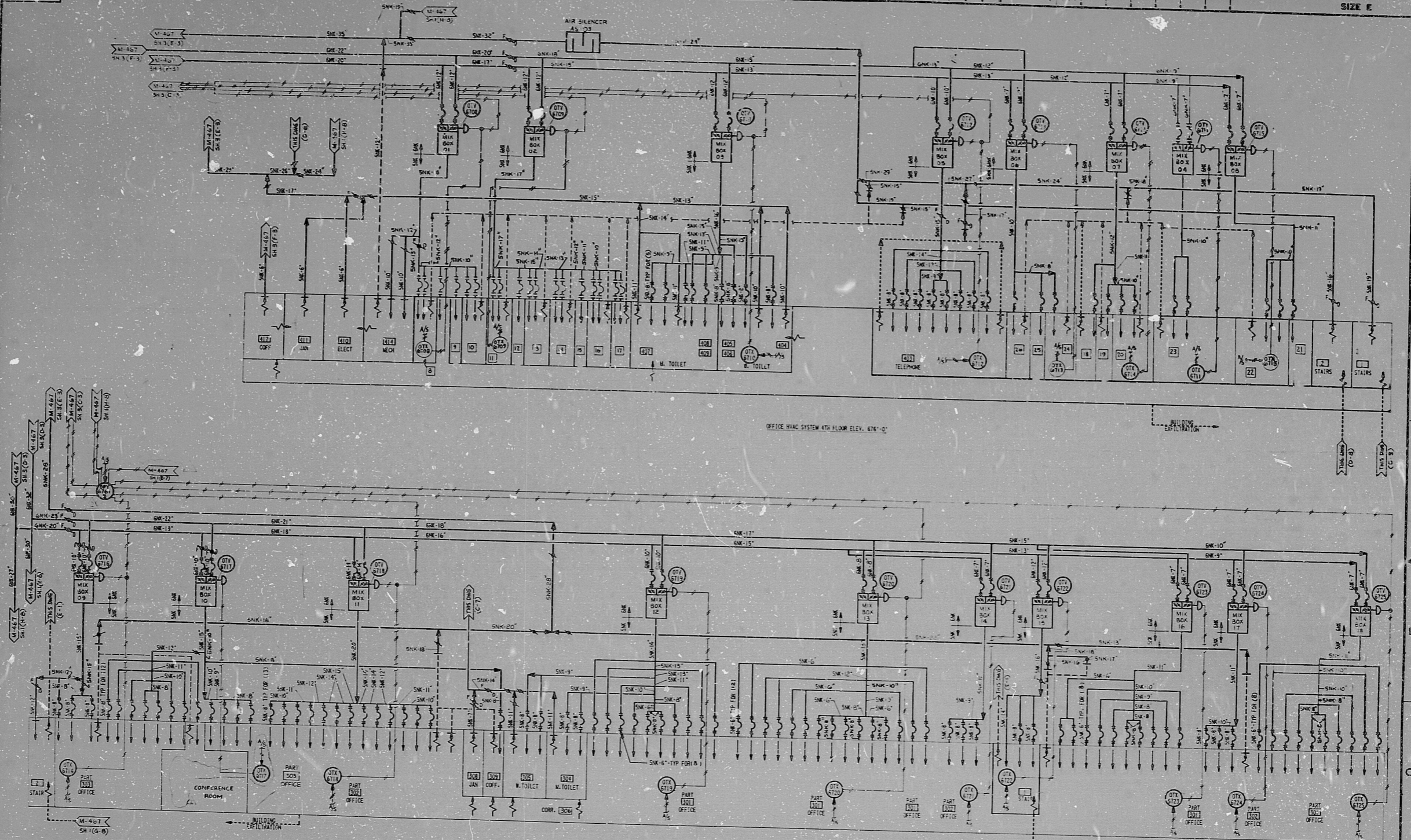


M-467 SH.2

SIZE E



OFFICE HVAC SYSTEM 4TH FLOOR ELEV. 676'-0"

OFFICE HVAC SYSTEM 3RD FLOOR ELEV. 662'-0"

POOR ORIGINAL

TERA APERTURE CARD

- NOTES:
1.  $\nabla$  SYMBOL INDICATES FLEXIBLE CONNECTION.
  2. ALL OUTWORK AND CONNECTIONS TO DEFENDERS ARE SINK-B UNLESS OTHERWISE INDICATED.
  3. ALL BRANCH OUTWORK TO LIGHT TRAFFER OFFSETS CONTAIN BALANCING DAMPERS.

2	REVISED AND REISSUED		
1	REVISED AND REISSUED, INCORP. 10/1/58		
0	REVISED & REISSUED, HAS TWO SHEETS ISSUED FOR CONSTRUCTION		
	BY: [Signature]		
	DATE: [Date]		
	SCALE: NONE		
	BY: [Signature]		
	DATE: [Date]		
<b>BECHTEL</b>			
ANN ARBOR, MICHIGAN			
MIDLAND PLANT UNITS 1 & 2 CONSUMERS POWER COMPANY			
PIPING AND INSTRUMENT DIAGRAM HEATING VENTILATING & AIR CONDITIONING OFFICE & SERVICE BUILDING			
7220	M-467 SH.2	2	

30X

8.5"

11"

17"

8.5"

11"

17"

RIDS

8112230075

