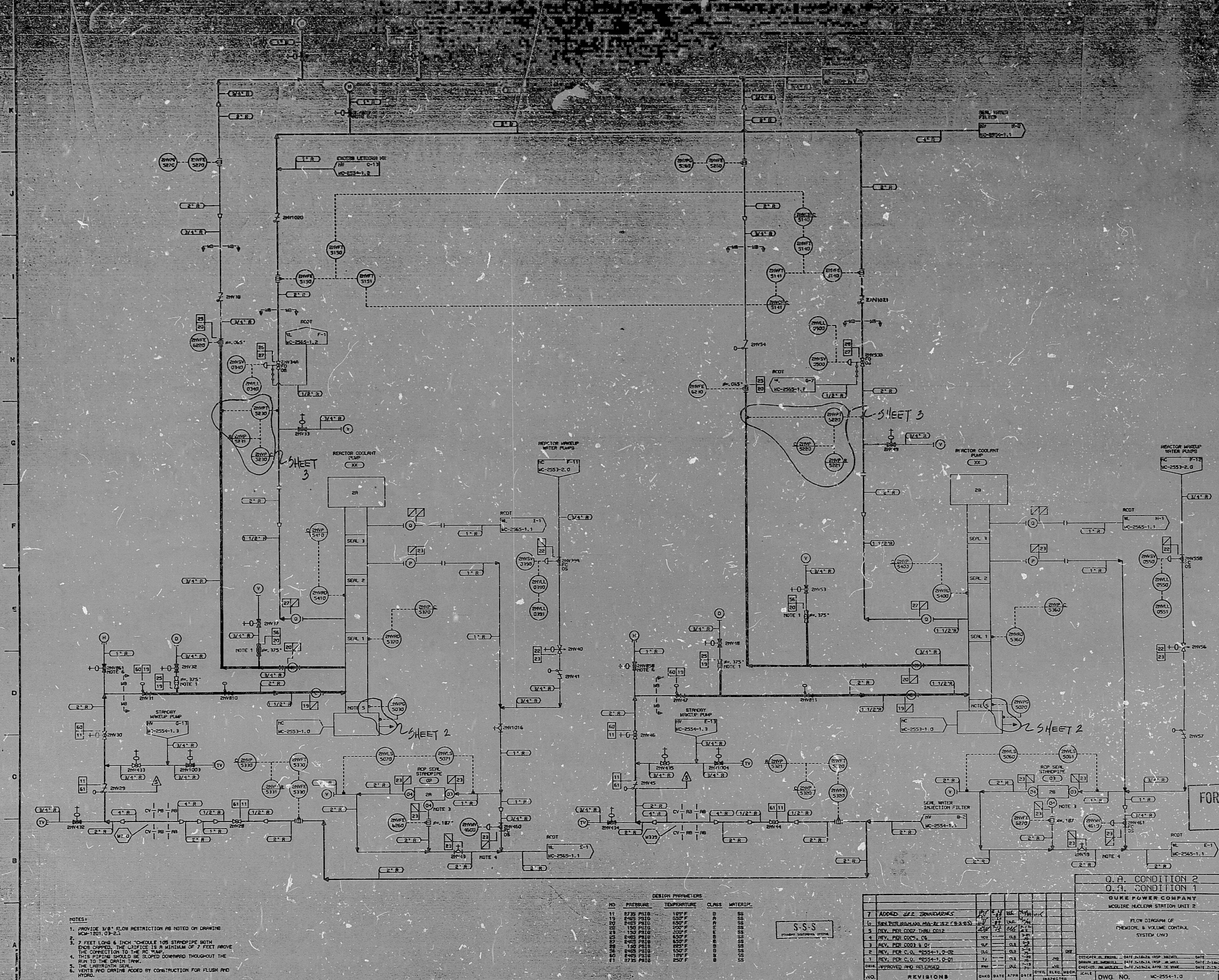


ITEM NUMBERS

B.P. 051.004 SYSTEM



- NOTES:
1. PROVIDE 3/8" FLOW RESTRICTION AS NOTED ON DRAWING
 2. 1" FEED 03-21
 3. 7 FEET LONG 4 INCH SCH40S FOR STANDPIPE BOTH ENDS CAPPED. THE CLEARANCE IS A MINIMUM OF 7 FEET ABOVE THE CONNECTION TO THE 2" PIPING
 4. THIS PIPING SHOULD BE SLOPED DOWNWARD THROUGHOUT THE RUN TO THE OPEN TANK.
 5. THE LIFTSTAIN SERIAL
 6. VENTS AND DRAINING ADDED BY CONSTRUCTION FOR FLUSH AND HYDRO.

DESIGN PARAMETERS

NO.	PARAMETER	TEMPERATURE	CLASS	MATERIAL
11	1/2" PIPING	180°F	SP	SS
12	1/2" PIPING	180°F	SP	SS
13	1/2" PIPING	180°F	SP	SS
14	1/2" PIPING	180°F	SP	SS
15	1/2" PIPING	180°F	SP	SS
16	1/2" PIPING	180°F	SP	SS
17	1/2" PIPING	180°F	SP	SS
18	1/2" PIPING	180°F	SP	SS
19	1/2" PIPING	180°F	SP	SS
20	1/2" PIPING	180°F	SP	SS
21	1/2" PIPING	180°F	SP	SS
22	1/2" PIPING	180°F	SP	SS
23	1/2" PIPING	180°F	SP	SS
24	1/2" PIPING	180°F	SP	SS
25	1/2" PIPING	180°F	SP	SS
26	1/2" PIPING	180°F	SP	SS
27	1/2" PIPING	180°F	SP	SS
28	1/2" PIPING	180°F	SP	SS
29	1/2" PIPING	180°F	SP	SS
30	1/2" PIPING	180°F	SP	SS
31	1/2" PIPING	180°F	SP	SS

S-S

REVISIONS

NO.	REVISIONS	DATE	BY	CHKD
1	ISSUED FOR CONSTRUCTION	11/15/68
2	REV. PER C.O. 2554-1.1	12/1/68
3	REV. PER C.O. 2554-1.2	12/1/68
4	REV. PER C.O. 2554-1.3	12/1/68
5	REV. PER C.O. 2554-1.4	12/1/68
6	REV. PER C.O. 2554-1.5	12/1/68
7	REV. PER C.O. 2554-1.6	12/1/68
8	REV. PER C.O. 2554-1.7	12/1/68
9	REV. PER C.O. 2554-1.8	12/1/68
10	REV. PER C.O. 2554-1.9	12/1/68
11	REV. PER C.O. 2554-1.10	12/1/68
12	REV. PER C.O. 2554-1.11	12/1/68

O.A. CONDITION 2
O.A. CONDITION 1
DUKE POWER COMPANY
MCURE NUCLEAR STATION UNIT 2
FLOW DIAGRAM OF
REACTOR & VOLUME CONTROL
SYSTEM (CV)

FOR INFORMATION ONLY

SI APERTURE CARD

CL: 1/4/80

3/11

8904060308

PDR RIDS

