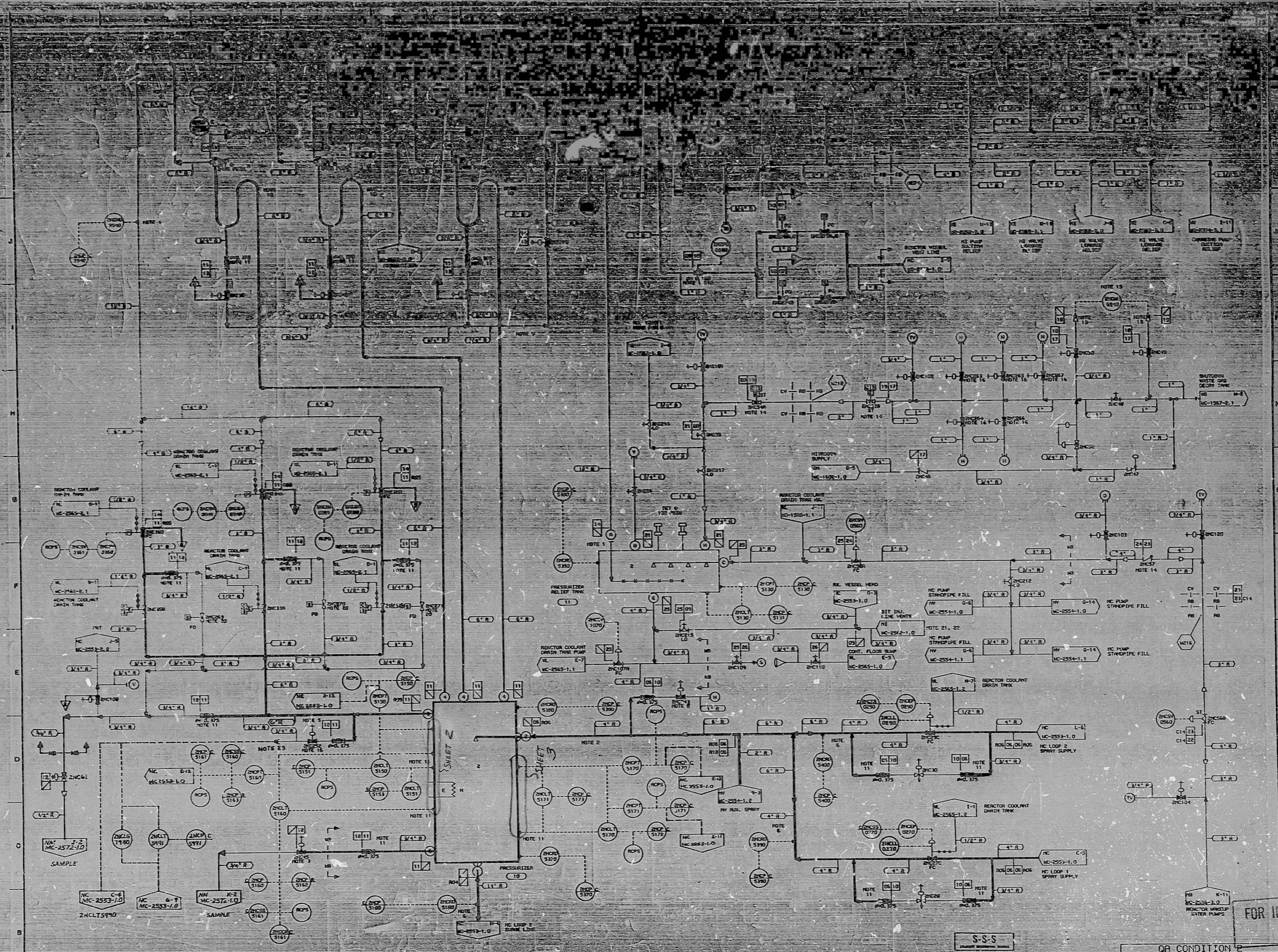


B15.021.001 PZR
B15.051.002 SYSTEM

ITEM NUMBERS



- NOTES:
1. VENT HOLE PROVIDED.
 2. SLOW SPRAY PIPE DOWNWARD TO PROVIDE WATER SEAL BETWEEN PRESSURIZER AND SPRAY VALVE.
 3. USE INDICATOR INSIDE TO VERIFY WATER SEAL ON POWER RELIEF VALVES.
 4. SLOW SPRAY DOWNWARD TO PROVIDE WATER SEAL ON POWER RELIEF VALVES.
 5. LOCATE APPROXIMATELY BETWEEN LOOP AND PRESSURIZER.
 6. DRAIN TO FURNACE AND LB. HIGH PLUMBER. PLEASE DO NOT PIPE CONNECTED TO FET INORDER LINE TO BE VERIFIED TO FIT. LOCK- CONNECTION AS CLOSE AS POSSIBLE TO PERM.
 7. FET LABEL MUST BE PLACED NEARBY. THE LABEL NO. MC-2572-1.0.
 8. FET LABEL MUST BE PLACED NEARBY. THE LABEL NO. MC-2572-1.0.
 9. FET LABEL MUST BE PLACED NEARBY. THE LABEL NO. MC-2572-1.0.
 10. FET LABEL MUST BE PLACED NEARBY. THE LABEL NO. MC-2572-1.0.
 11. FET LABEL MUST BE PLACED NEARBY. THE LABEL NO. MC-2572-1.0.
 12. FET LABEL MUST BE PLACED NEARBY. THE LABEL NO. MC-2572-1.0.
 13. FET LABEL MUST BE PLACED NEARBY. THE LABEL NO. MC-2572-1.0.
 14. FET LABEL MUST BE PLACED NEARBY. THE LABEL NO. MC-2572-1.0.
 15. FET LABEL MUST BE PLACED NEARBY. THE LABEL NO. MC-2572-1.0.
 16. FET LABEL MUST BE PLACED NEARBY. THE LABEL NO. MC-2572-1.0.
 17. FET LABEL MUST BE PLACED NEARBY. THE LABEL NO. MC-2572-1.0.
 18. FET LABEL MUST BE PLACED NEARBY. THE LABEL NO. MC-2572-1.0.
 19. FET LABEL MUST BE PLACED NEARBY. THE LABEL NO. MC-2572-1.0.
 20. FET LABEL MUST BE PLACED NEARBY. THE LABEL NO. MC-2572-1.0.
 21. FET LABEL MUST BE PLACED NEARBY. THE LABEL NO. MC-2572-1.0.
 22. FET LABEL MUST BE PLACED NEARBY. THE LABEL NO. MC-2572-1.0.
 23. FET LABEL MUST BE PLACED NEARBY. THE LABEL NO. MC-2572-1.0.

ITEM NUMBERS

NO.	DESCRIPTION	DATE	BY	CHKD
1
2
3
4
5
6
7
8
9
10
11
12
13
14
15
16
17
18
19
20
21
22
23

REVISIONS

NO.	DESCRIPTION	DATE	BY	CHKD
1
2
3
4
5
6
7
8
9
10
11
12
13
14
15
16
17
18
19
20
21
22
23

OF CONDITION 2
OF CONDITION 1

NO.	REVISIONS	DATE	BY	CHKD
1
2
3
4
5
6
7
8
9
10
11
12
13
14
15
16
17
18
19
20
21
22
23

FOR INFORMATION ONLY

SCALE: 1/4" = 1'-0"

DWG. NO. MC-2553-2.0

DATE: 12/12/54

BY: SSS

CHKD: ...

APPROVED: ...

REVISIONS: ...

NO. 12

SI APERTURE CARD

FOR INFORMATION ONLY

OF CONDITION 2
OF CONDITION 1

FLOW DIAGRAM OF REACTOR COOLANT SYSTEM (RCS)

SCALE: 1/4" = 1'-0"

DWG. NO. MC-2553-2.0

DATE: 12/12/54

BY: SSS

CHKD: ...

APPROVED: ...

REVISIONS: ...

NO. 12

PDR RIDS

8904060275

