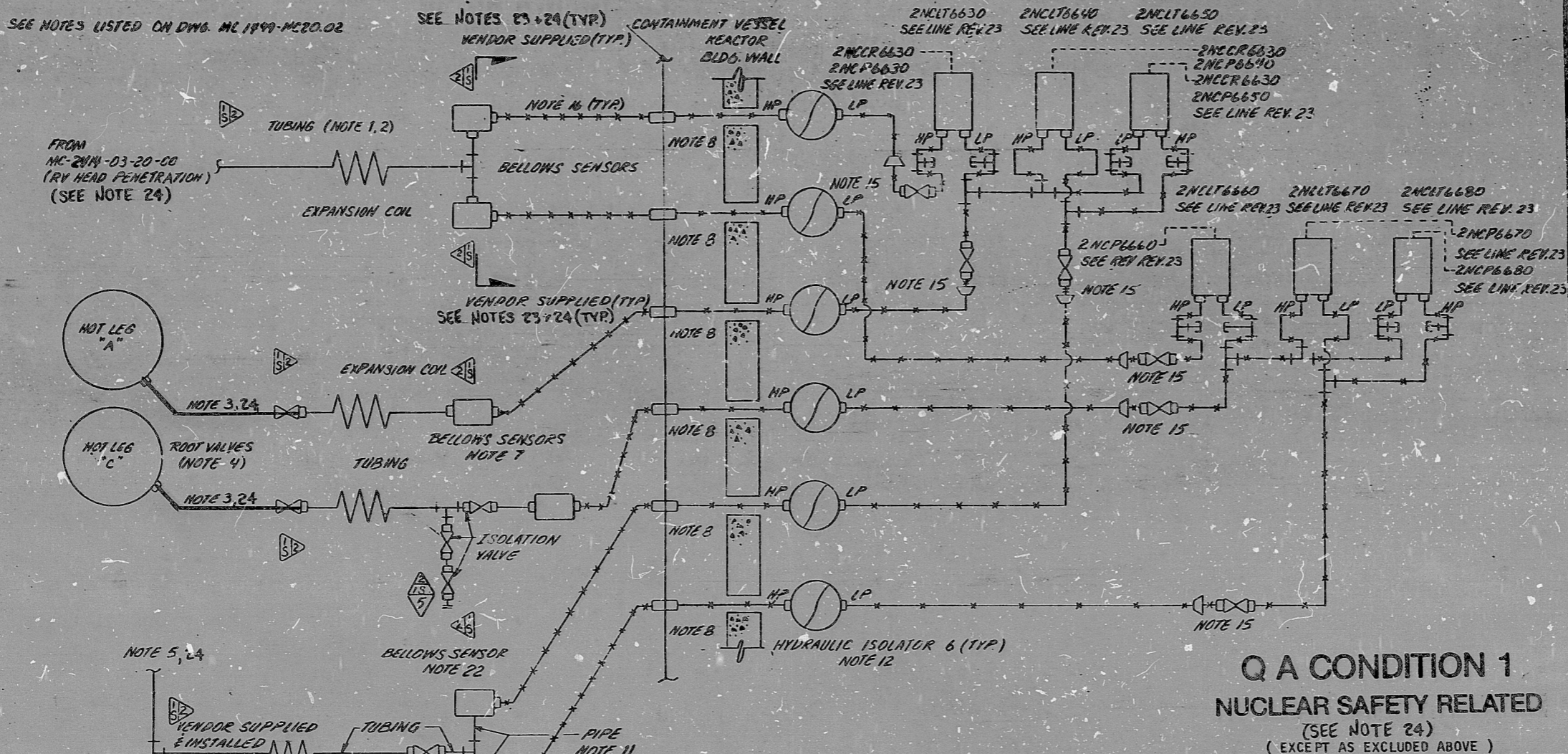


NOTE:
SEE NOTES LISTED ON DWG. MC 1999-NC20.02



Q A CONDITION 1
NUCLEAR SAFETY RELATED
(SEE NOTE 24)
(EXCEPT AS EXCLUDED ABOVE)

- NUCLEAR SAFETY RELATED EXCLUSIONS**
1. FITTINGS, TUBING, PIPING, & VALVES (Not part of a Safety Related Piping System, Etc.)
 - a) None
 2. INSTRUMENTS (Do not serve a safety function)
 - a) None

DUKE POWER COMPANY McGUIRE NUCLEAR STATION - UNIT 2										
INSTRUMENT DETAIL										
REACTOR VESSEL LEVEL										
7	REVISED REVISION LEVEL & UPDATED TO REFLECT IMP. OF NSM MG-1-0331/00	5/1/85	DES	IMP	DES	IMP	DES	IMP	DES	IMP
6	REDRAWN & REVISED REV. LEVEL	5/1/85	DES	IMP	DES	IMP	DES	IMP	DES	IMP
5	REV. PER NSM MG-20076/00	1/2/85	DES	IMP	DES	IMP	DES	IMP	DES	IMP
ORIG.	IMP. DATE 5-30-85	1/2/85	DES	IMP	DES	IMP	DES	IMP	DES	IMP
NO.	REVISIONS	DATE	CHKD.	DATE	APPR.	DATE	CIVIL	ELEC.	MECH.	INSPECTED
DWG. NO. MC-2499-NC20.01										
REV. 7										

5/1/85

SI
APERTURE
CARD

FOR INFORMATION
ONLY

8904060264

PDR RIDS

