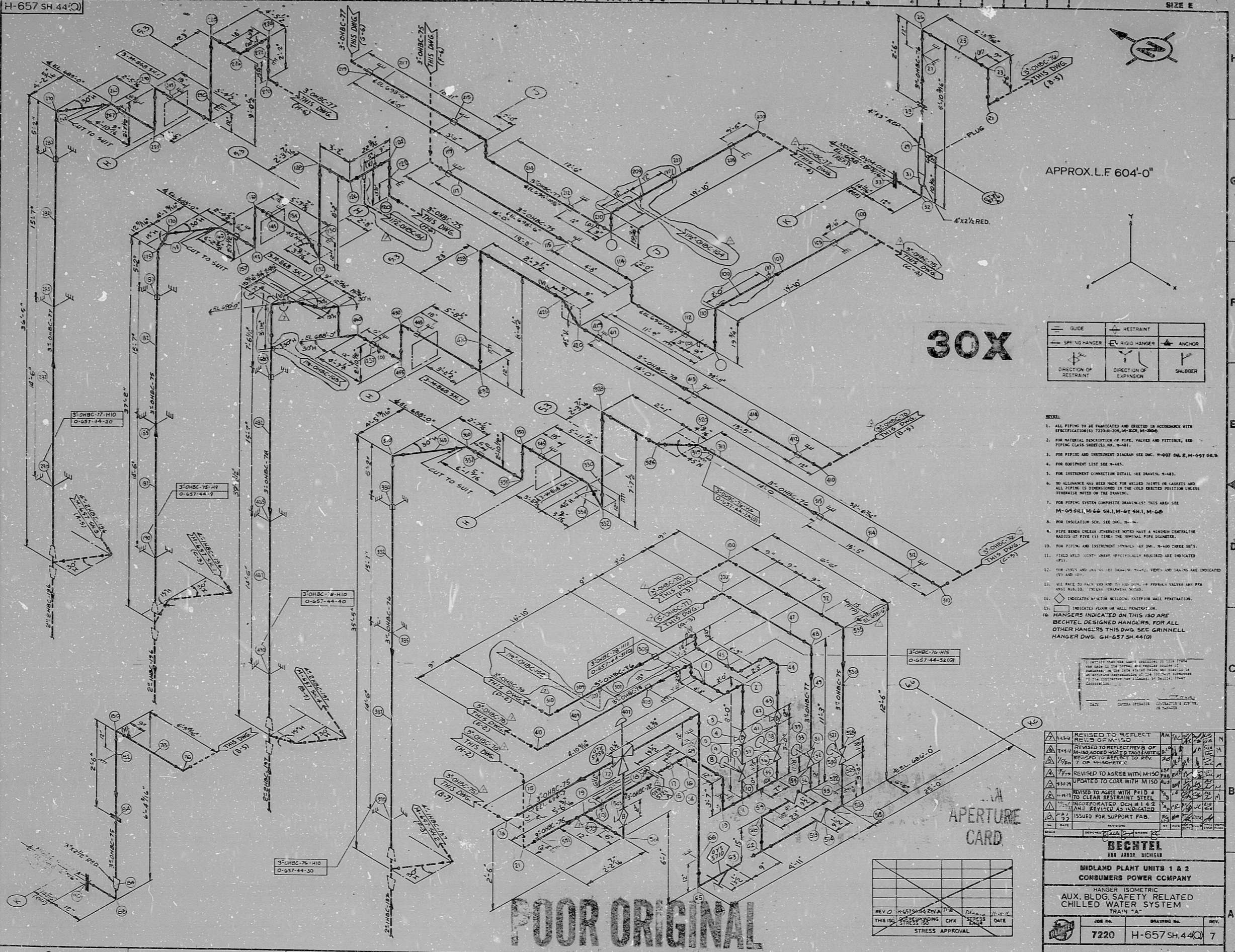


H-657 SH.44(O)

SIZE E



APPROX. L.F 604'-0"

30X

—	RESTRAINT	ANCHOR
—	RIGID HANGER	SWIBBER
→	DIRECTION OF RESTRAINT	DIRECTION OF EXPANSION

- NOTES:
1. ALL PIPING TO BE FABRICATED AND ERRECTED IN ACCORDANCE WITH SPECIFICATIONS 7220-20, 21, 22, 23, 24, 25, 26, 27, 28, 29, 30, 31, 32, 33, 34, 35, 36, 37, 38, 39, 40, 41, 42, 43, 44, 45, 46, 47, 48, 49, 50, 51, 52, 53, 54, 55, 56, 57, 58, 59, 60, 61, 62, 63, 64, 65, 66, 67, 68, 69, 70, 71, 72, 73, 74, 75, 76, 77, 78, 79, 80, 81, 82, 83, 84, 85, 86, 87, 88, 89, 90, 91, 92, 93, 94, 95, 96, 97, 98, 99, 100.
 2. FOR MATERIAL SPECIFICATION OF PIPE, VALVES AND FITTINGS, SEE PIPING CLASS SHEETS, NO. H-641.
 3. FOR PIPING AND INSTRUMENT DIAGRAM SEE DWG. H-657 SH.2, M-657 SH.3.
 4. FOR EQUIPMENT LIST SEE H-645.
 5. FOR INSTRUMENT CONNECTION DETAIL, SEE DRAWING H-648.
 6. PIPE HANGERS AND BRACKETS SHALL HAVE A MINIMUM CENTERLINE RADIUS OF FIVE (5) TIMES THE NOMINAL PIPE DIAMETER.
 7. FOR PIPING SYSTEM COMPOSITE DRAWINGS, THIS AREA SEE M-657 SH.1, M-66 SH.1, M-67 SH.1, M-68.
 8. FOR INSULATION SCH. SEE DWG. H-649.
 9. PIPE HANGERS UNLESS OTHERWISE NOTED HAVE A MINIMUM CENTERLINE RADIUS OF FIVE (5) TIMES THE NOMINAL PIPE DIAMETER.
 10. FOR PIPING AND INSTRUMENT SYMBOLS, SEE DWG. H-640 THREE SETS.
 11. FIELD WELD JOINTS, UNLESS SPECIFICALLY NOTED, ARE INDICATED (F).
 12. FOR LINES AND JOINTS, SEE DRAWING H-649, VENTS AND DRAINS ARE INDICATED (V) AND (D).
 13. ALL PIPING TO BE PAINTED AND TO BE PROTECTED BY FEDERAL VALVES ARE FOR ANSI 316-L13, UNLESS OTHERWISE NOTED.
 14. DIAMETER INDICATED BY SMALL CIRCLE, EXCEPT FOR WALL PENETRATION.
 15. INDICATED PLANS OR WALL PENETRATION.
 16. HANGERS INDICATED ON THIS ISO ARE BECHTEL DESIGNED HANGERS, FOR ALL OTHER HANGERS THIS DWG. SEE GRINNELL HANGER DWG. H-657 SH.44(O).

REV	DESCRIPTION	DATE	BY	CHK	APP
1	REVISED TO REFLECT REVISED MISO	11/10/77
2	REVISED TO REFLECT REVISED MISO	11/10/77
3	REVISED TO REFLECT REVISED MISO	11/10/77
4	REVISED TO REFLECT REVISED MISO	11/10/77
5	REVISED TO REFLECT REVISED MISO	11/10/77
6	REVISED TO REFLECT REVISED MISO	11/10/77
7	REVISED TO REFLECT REVISED MISO	11/10/77
8	REVISED TO REFLECT REVISED MISO	11/10/77
9	REVISED TO REFLECT REVISED MISO	11/10/77
10	REVISED TO REFLECT REVISED MISO	11/10/77
11	REVISED TO REFLECT REVISED MISO	11/10/77
12	REVISED TO REFLECT REVISED MISO	11/10/77
13	REVISED TO REFLECT REVISED MISO	11/10/77
14	REVISED TO REFLECT REVISED MISO	11/10/77
15	REVISED TO REFLECT REVISED MISO	11/10/77
16	REVISED TO REFLECT REVISED MISO	11/10/77
17	REVISED TO REFLECT REVISED MISO	11/10/77
18	REVISED TO REFLECT REVISED MISO	11/10/77
19	REVISED TO REFLECT REVISED MISO	11/10/77
20	REVISED TO REFLECT REVISED MISO	11/10/77

BECHTEL
ANN ARBOR, MICHIGAN

MIDLAND PLANT UNITS 1 & 2
CONSUMERS POWER COMPANY

HANGER ISOMETRIC
AUX. BLDG. SAFETY RELATED
CHILLED WATER SYSTEM
TRAIN "A"

7220 H-657 SH.44(O) 7

POOR ORIGINAL

REV	DESCRIPTION	DATE	BY	CHK	APP
1	ISSUED FOR SUPPORT FAB.	11/10/77

8.5" 11" 17"

8.5" 11" 17"

RIDS

8112220412

