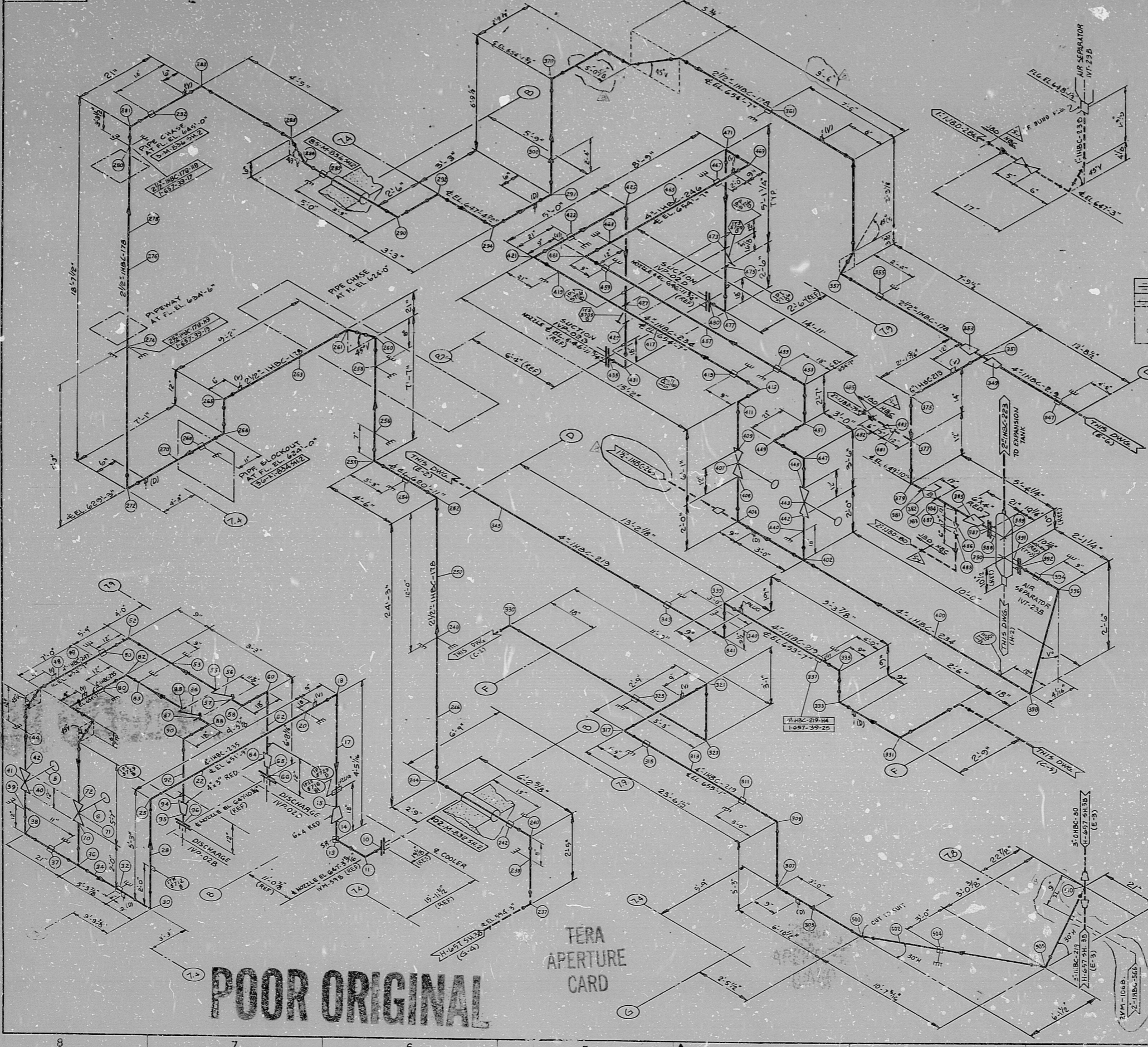
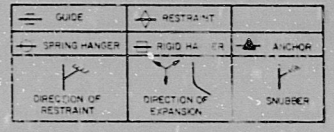


H-657 SH.39 (C)

SIZE E



APPROX. L.E 451



- NOTES:
1. ALL PIPING TO BE PARALLELED AND ORIENTED IN ACCORDANCE WITH SPECIFICATIONS 2204-401A.
 2. FOR MATERIAL DESCRIPTION OF PIPE, VALVES AND FITTINGS, SEE PIPING CLASS SHEETS (M-44).
 3. FOR PIPING AND INSTRUMENT SYMBOLS SEE Dwg. H-657 SH.2.
 4. FOR INSTRUMENT LIST SEE H-441.
 5. FOR INSTRUMENT CONNECTION DETAILS SEE DRAWING H-441.
 6. NO ALLOWANCE HAS BEEN MADE FOR WELDED JOINTS OR JOISTS AND ALL PIPING IS SHOWN LINED IN THE CORRECT POSITION UNLESS OTHERWISE NOTED ON THE DRAWING.
 7. FOR PIPING SYSTEM COMPLETE TRANSMISSIONS SEE AREA USE M-65 SH.2, M-66 SH.2, M-36 SH.2, M-34 SH.2, M-33 SH.2, M-32 SH.2.
 8. FOR INSULATION SEE Dwg. H-441.
 9. PIPE SIZES UNLESS OTHERWISE NOTED HAVE A NOMINAL INTERNAL DIAMETER OF PIPE (I.D.) UNLESS THE OPPOSITE TYPE IS SHOWN.
 10. FOR PIPING AND INSTRUMENT SYMBOLS SEE Dwg. H-657 SH.2.
 11. FIELD NOTES WHERE SPECIFICALLY REFERRED ARE INDICATED (F.N.).
 12. FOR TIGHTS AND DRAINS SEE DRAWING H-441, VOTES AND TRAINS USE INDICATED (V) AND (T).
 13. ALL FACE TO FACE AND END TO END JOINTS OF PIPING UNLESS OTHERWISE NOTED.
 14. \square INDICATES RECTOR BUILDING EXTERIOR WALL PENETRATION.
 15. \triangle INDICATES PIPING IN WALL PENETRATION.
 16. \leftarrow INDICATES DIMENSION TO RECTOR BLDG NORTH-SOUTH AND EAST-WEST AXIS.
 17. HANGERS INDICATED ON THIS ISO ARE BECTEL DESIGNED HANGERS, FOR ALL OTHER HANGERS THIS DWG. SEE CHANNEL HANGER DWG. H-657 SH.2.

30X

DESIGNED BY: [Signature] DATE: [Date] CHECKED BY: [Signature] DATE: [Date]

NO.	DESCRIPTION	DATE	BY	CHKD.
1	ISSUED FOR SUPPORT FAB.			
2	REVISION TO REFLECT REV. B			
3	REVISION TO REFLECT REV. A			
4	REVISION TO REFLECT REV. M-150			
5	REVISION TO REFLECT REV. M-150			
6	REVISION TO REFLECT REV. M-150			
7	REVISION TO REFLECT REV. M-150			
8	REVISION TO REFLECT REV. M-150			
9	REVISION TO REFLECT REV. M-150			
10	REVISION TO REFLECT REV. M-150			
11	REVISION TO REFLECT REV. M-150			
12	REVISION TO REFLECT REV. M-150			
13	REVISION TO REFLECT REV. M-150			
14	REVISION TO REFLECT REV. M-150			
15	REVISION TO REFLECT REV. M-150			
16	REVISION TO REFLECT REV. M-150			
17	REVISION TO REFLECT REV. M-150			
18	REVISION TO REFLECT REV. M-150			
19	REVISION TO REFLECT REV. M-150			
20	REVISION TO REFLECT REV. M-150			

BECTEL
ANN ARBOR, MICHIGAN

MIDLAND PLANT UNITS 1 & 2
CONSUMERS POWER COMPANY

HANGER ISOMETRIC
AUX. BLDG. SAFETY RELATED
CHILLED WATER SYSTEM
UNIT 1 TRAIN "B" RETURN

JOB NO. 7220 DRAWING NO. H-657 SH.39(Q) REV. 8

POOR ORIGINAL

17" 11" 8.5" 8.5" 11" 17"

17" 11" 8.5" 8.5" 11" 17"

RIDS

812220401

