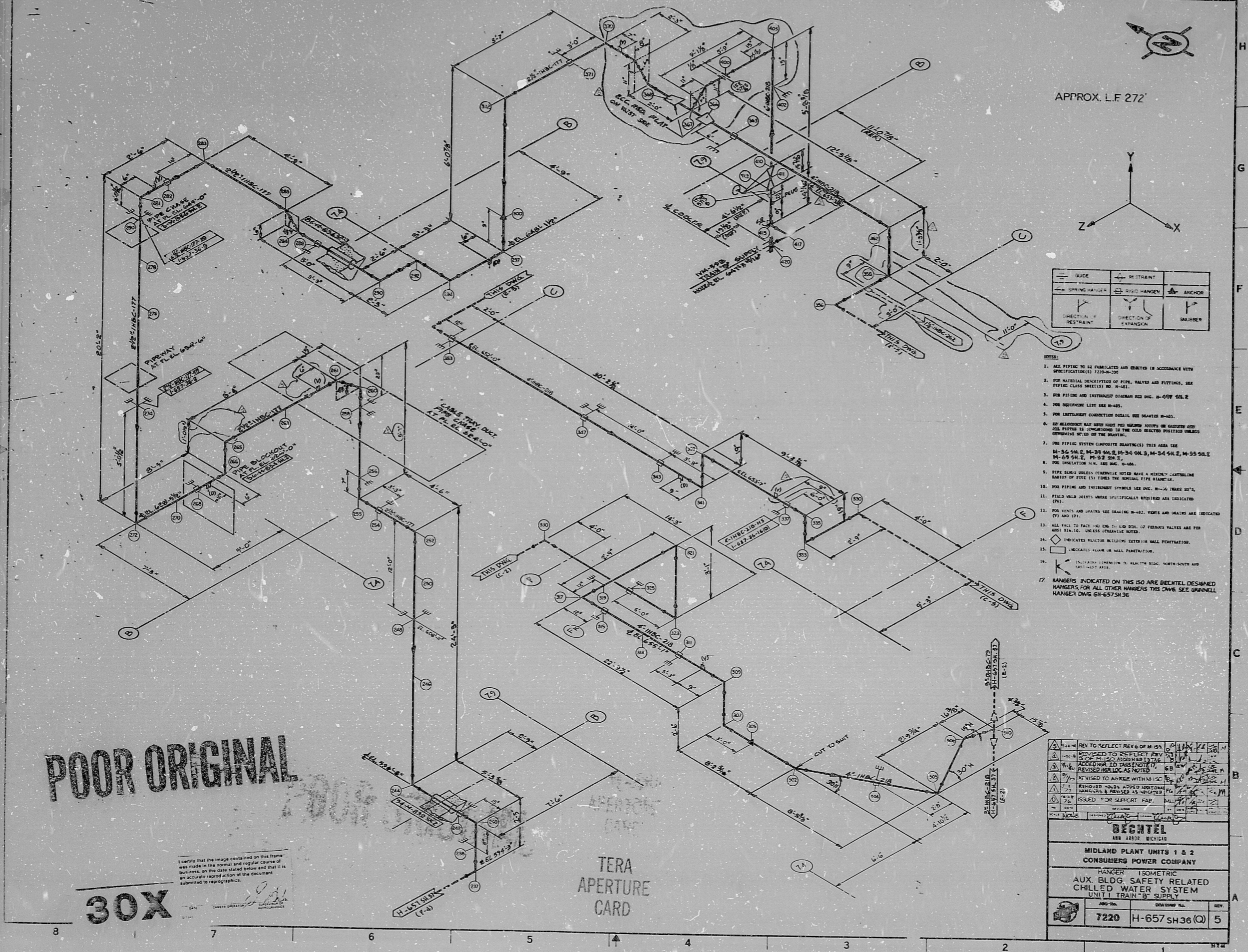


H-657SH-36

SCALE B



APPROX. L.F. 272'

| | | |
|------------------------|---------------------|--------|
| GUIDE | RESTRAINT | ANCHOR |
| SPRING HANGER | RIGID HANGER | SAUBER |
| DIRECT ON OF RESTRAINT | DIRECT ON OF HANGER | SAUBER |

- NOTES:
1. ALL PIPING TO BE FABRICATED AND ERRECTED IN ACCORDANCE WITH SPECIFICATIONS 1204-1205
 2. FOR MATERIAL DESCRIPTIONS OF PIPE, VALVES AND FITTINGS, SEE PIPING CLASS SHEETS NO. H-481.
 3. FOR PIPING AND INSTRUMENT DIAGRAMS SEE DOC. H-657 SH-2
 4. FOR EQUIPMENT LIST SEE H-485.
 5. FOR INSTRUMENT CONNECTIONS SEE DRAWING H-485.
 6. NO REFERENCE HAS BEEN MADE TO HANGERS, SUPPORTS OR GASKETS AND ALL PIPING IS ASSUMED TO BE THE FIELD WELDED POLISHED UNLESS OTHERWISE NOTED ON THE DRAWING.
 7. FOR PIPING SYSTEM COMPOSITE DIAGRAMS THIS AREA SEE M-36 SH-2, M-38 SH-2, M-39 SH-2, M-34 SH-2, M-35 SH-2, M-40 SH-2, M-37 SH-2.
 8. FOR INSULATION H.M. SEE DOC. H-484.
 9. PIPE BANDS UNLESS OTHERWISE NOTED HAVE A HANGING CONTROLLING BANDS OF STEEL (S) UNDER THE NORMAL PIPE DIAMETER.
 10. FOR PIPING AND INSTRUMENT SYMBOLS SEE DOC. H-48, TABLE 017.
 11. FIELD WELD JOINTS WHERE SPECIFICALLY NOTED ARE INDICATED (PW).
 12. FOR VENTS AND WHIPS SEE DRAWING H-482. VENTS AND WHIPS ARE INDICATED (V) AND (W).
 13. ALL FACS TO FACE AND END TO END OF FERRULES VALVES ARE PER ANSI B16.10. UNLESS OTHERWISE NOTED.
 14. \square INDICATES FLANGES INCLUDING EXTERIOR WALL PENETRATIONS.
 15. \square INDICATES FLANGE OR WALL PENETRATIONS.
 16. \square INDICATES EXTENSION TO MAINTAIN 8\"/>

POOR ORIGINAL

30X

I certify that the image contained on this frame was made in the normal and regular course of business, on the date stated below and that it is an accurate reproduction of the document submitted to reprographics.

TERA APERTURE CARD

| | | | | |
|-----|----------|-----------------------------------|-----|-----|
| REV | DATE | DESCRIPTION | BY | CHK |
| 1-1 | 11/15/55 | REV TO REFLECT REV 6 OF H-55 | ... | ... |
| 1-2 | 11/15/55 | REVISED TO REFLECT REV 10 OF H-55 | ... | ... |
| 1-3 | 11/15/55 | ADDED HANGING AND SUPPORTS | ... | ... |
| 1-4 | 11/15/55 | REVISED TO ADD HANGERS WITH MISC | ... | ... |
| 1-5 | 11/15/55 | REVISED TO ADD MISC HANGERS | ... | ... |
| 1-6 | 11/15/55 | ISSUED FOR SUPPORT FAB | ... | ... |

| | |
|---------------------------|------------------|
| BECHTEL | |
| 485 4852 BICHSEL | |
| MIDLAND PLANT UNITS 1 & 2 | |
| CONSUMERS POWER COMPANY | |
| HANGER ISOMETRIC | |
| AUX. BLDG. SAFETY RELATED | |
| CHILLED WATER SYSTEM | |
| UNIT I TRAIN BY SUPPLY | |
| 7220 | H-657SH-36 (Q) 5 |

11
8.5"
8.5"
11"
17"

11
8.5"
8.5"
11"
17"

RIDS

812220400

