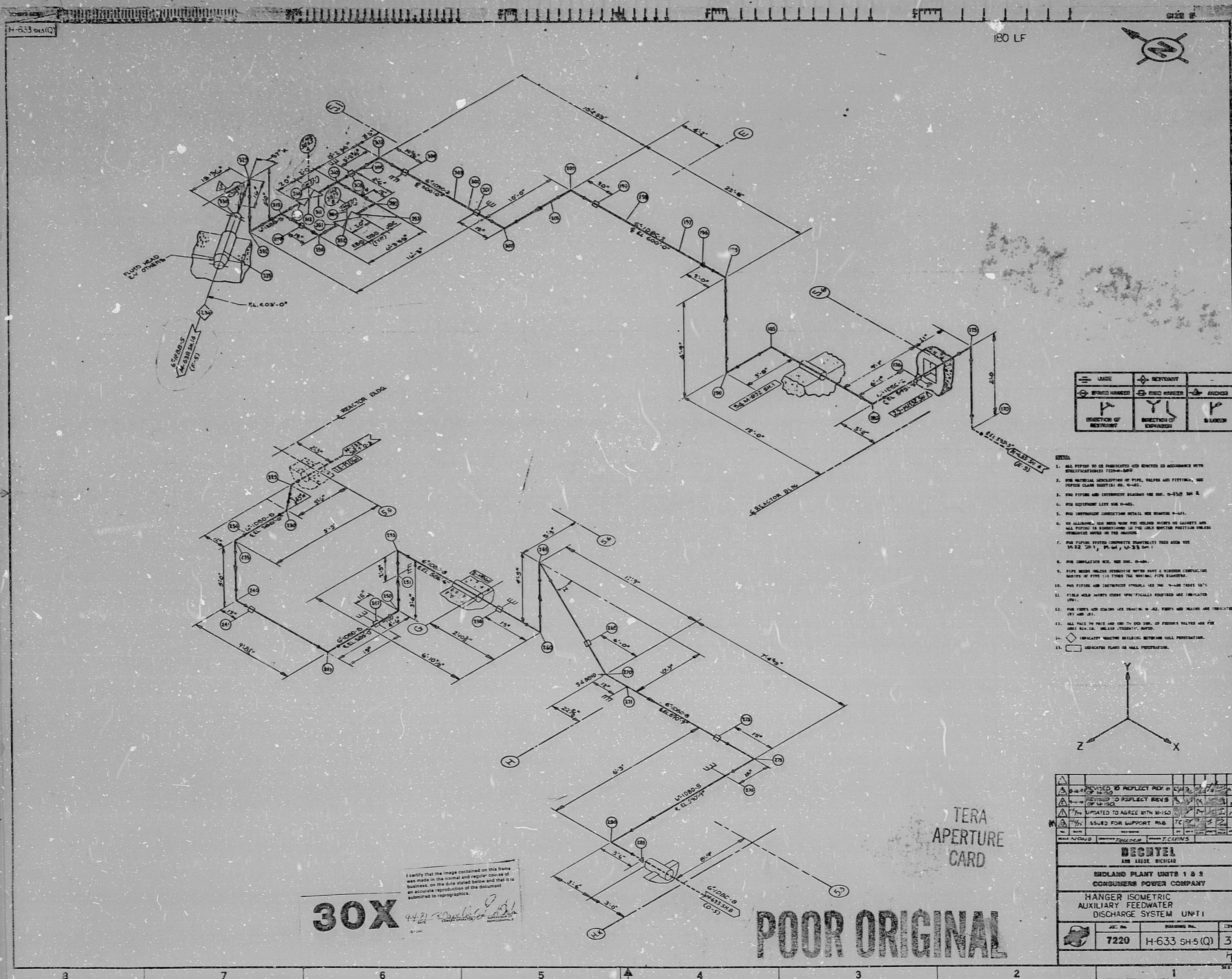
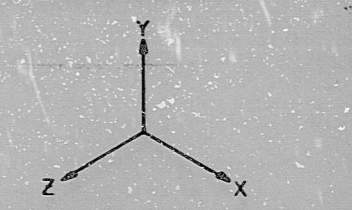


17"
11"
8.5"
8.5"
11"
17"

17"
11"
8.5"
8.5"
11"
17"



- NOTES**
1. ALL PIPING TO BE FABRICATED AND INSTALLED IN ACCORDANCE WITH SPECIFICATIONS 7220-100.
 2. FOR MATERIAL SPECIFICATIONS ON PIPE, VALVES AND FITTINGS, SEE PIPING CLASS SPEC (S) NO. 0-401.
 3. FOR PIPING AND INSTRUMENT SYMBOLS SEE SEC. 0-450 SH 2.
 4. FOR EQUIPMENT LIST SEE 0-402.
 5. FOR INSTRUMENT CONNECTION DETAILS SEE DRAWING 0-511.
 6. ON ALIGNING, USE MARKS FROM PIPE WELDER RIGS OR GAGES AND ALL PIPING TO BE SUBMITTED TO THE LOCAL INSPECTOR POSITION UNDER OPERATIONS SUPERVISOR IN THE PLANT.
 7. FOR PIPING SYSTEM COMPONENTS DRAWINGS (S) THIS DRAWING SEE 0-512 (S), 0-504, 0-513 (S).
 8. FOR COMPLETION SEE SEC. 0-404.
 9. PIPE WELDER SHALL SPECIFICALLY MARK WITH A WELDER CONNECTION MARKS OF PIPE TO THE LOCAL INSPECTOR POSITION.
 10. FOR PIPING AND INSTRUMENT SYMBOLS SEE SEC. 0-450 TABLE 101.
 11. FIELD WELD WENTY CHECK SPECIFICALLY REVIEWED AND INDICATED (S).
 12. FOR TANKS AND COLUMNS SEE DRAWING 0-401 AND TANKS AND COLUMNS ARE INDICATED BY 0-401.
 13. ALL PIPING TO BE MADE AND USED TO END USE OF PIPING VALVES AND FOR 0-401 SHALL BE WELDED (SPECIFICALLY MARKED).
 14. INDICATE WELDED BEHIND: WITHIN CELL PENETRATION.
 15. INDICATE PLANT OR HALL PENETRATION.



BECHTEL										
100 LEGS, BICHIGAN										
SHDLAND PLANT UNITS 1 & 2										
CONSUMERS POWER COMPANY										
HANGER ISOMETRIC										
AUXILIARY FEEDWATER										
DISCHARGE SYSTEM UNIT I										
7220	H-633 SH-5(Q)	3								

30X

TERA APERTURE CARD
POOR ORIGINAL

I certify that the image contained on this frame was made in the normal and regular course of business, on the date stated below and that it is an accurate reproduction of the document submitted to reprographics.

9-4-71
DATE

RIDS

8112220382

