

H 633 SH 3 C

STEERING ANALYSIS DATA					
DATE	TIME	DRIVER	VEHICLE	ROAD	WEATHER

APPROX LF 345

SYMBOL	DESCRIPTION
—	GUIDE
⊠	RESTRAINT
⊕	SPRINGER HANGER
⊖	FIXED HANGER
⊙	ANCHOR
↖	DIRECTION OF RESTRAINT
↗	DIRECTION OF EXPANSION
⊥	COLLISION

- NOTES**
- ALL PIPING TO BE FABRICATED AND ERRECTED IN ACCORDANCE WITH SPECIFICATIONS 1200-200.
 - FOR MATERIAL DESCRIPTIONS OF FITTINGS, VALVES AND FITTINGS, SEE PIPING CLASS SHEET(S) NO. H-501. SEE 1.5 AND 1.6.
 - FOR PIPING AND INSTRUMENT FLANGES SEE DOC. H-510. SEE 1.5 AND 1.6.
 - FOR EQUIPMENT LIST SEE H-451.
 - FOR INSTRUMENT CONNECTION DETAILS SEE DIAGRAM H-451.
 - SEE LEGEND AND SEE MADE FOR HELD ALIENS OR GASKETS AND ALL PIPING IS TO BE INSTALLED IN THE CORRECT POSITION UNLESS OTHERWISE NOTED ON THE DRAWING.
 - FOR PIPING SYSTEM COMPRESSIVE STRENGTHS SEE ASSESS THE DATA IN THE H-500 AND H-501.
 - FOR INSULATION SEE DOC. H-461.
 - PIPE BENDS HELD OPERATING SPACES HAVE A MINIMUM CLEARANCE OF 18" FROM THE BENDING PIPE HANGERS.
 - FOR FITTINGS AND INSTRUMENT FLANGES SEE DOC. H-500 TABLE 1.1.
 - FIELD WELD JOINTS MUST BE SPECIFICALLY IDENTIFIED AND INDICATED ON THE DRAWING.
 - FOR FITTINGS AND DRAINS SEE DIAGRAM H-461. TESTS AND DRAINS ARE INDICATED ON THE DRAWING.
 - ALL FACE TO FACE AND END TO END JOINTS OF FITTINGS VALVES ARE FOR ANSI B16.14. CHECK OVERSIZING EVIDENT.
 - INDICATED REACTION WELDING EXTENDED WALL PENETRATIONS.
 - INDICATED SLABS AS WALL PENETRATIONS.
 - ANCHORS TO BE REMOVED WITH 2" SPOOLS RE-INSTALLED IN NEW ANCHOR LOCATION.
 - HANGERS INDICATED ON THIS DRAWING ARE TO BE RE-INSTALLED IN NEW HANGER LOCATIONS FOR ALL OTHER HANGERS THIS DRAWING. SEE GENNELL HANGER DRAWING H-533 SH 3.

30X

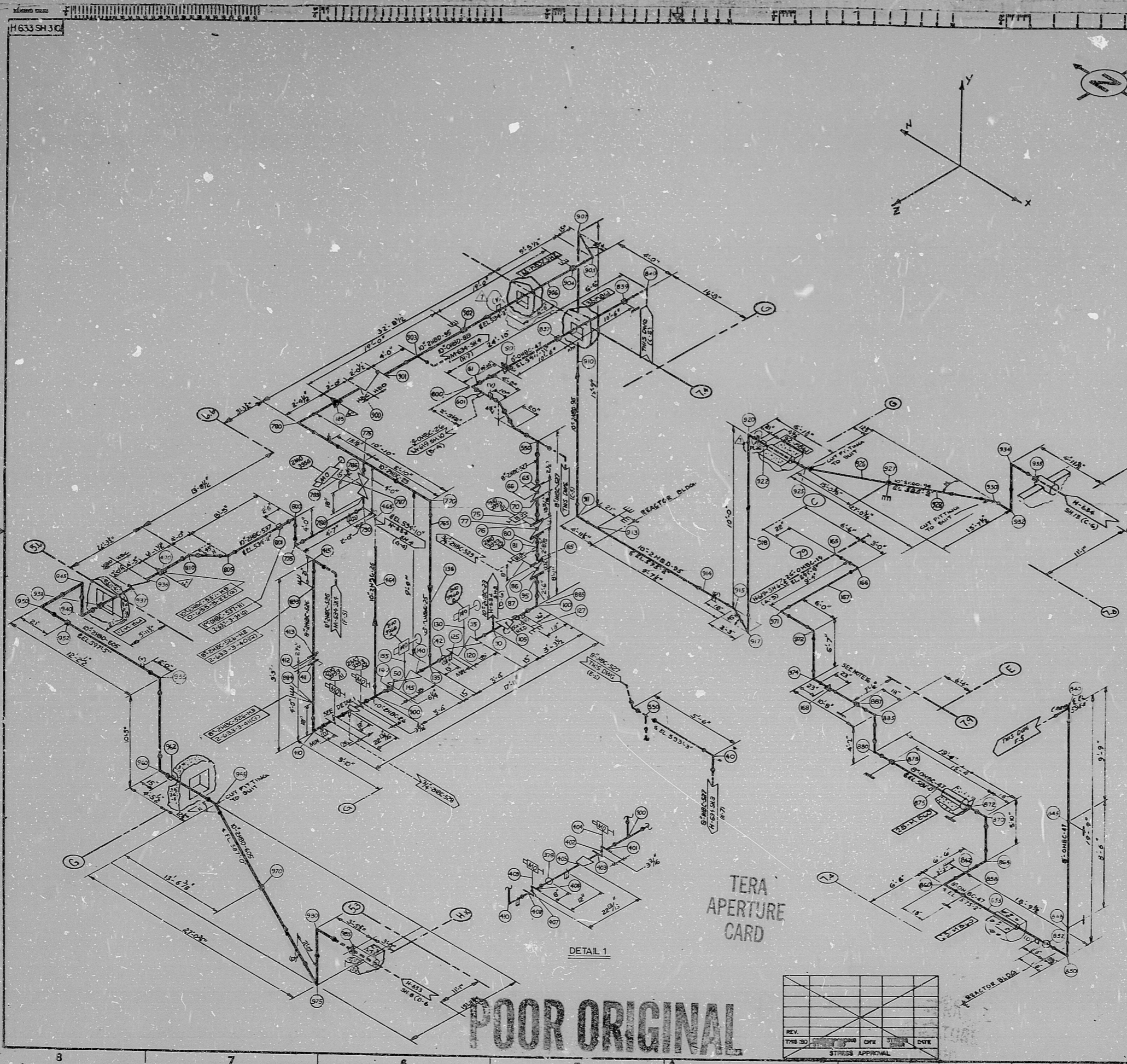
REV.	DATE	BY	CHKD.	DATE

BEHNTEL
480 12000 DICKENS

MIDLAND PLANT UNITS 1 & 2
CONSOLIDATED POWER COMPANY

HANGER ISOMETRIC
AUXILIARY FEEDWATER SUCTION SYSTEM
UNITS 1 & 2

7220 H 633 SH 3 (Q) 7



DETAIL 1

TERA APERTURE CARD

POOR ORIGINAL

REV.	DATE	BY	CHKD.	DATE

11
9.8
8.5
11
17

11
9.8
8.5
11
17

RIDS

8112220379

