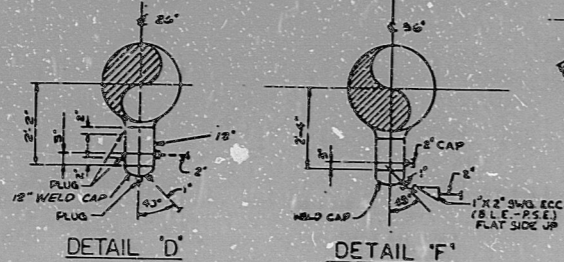
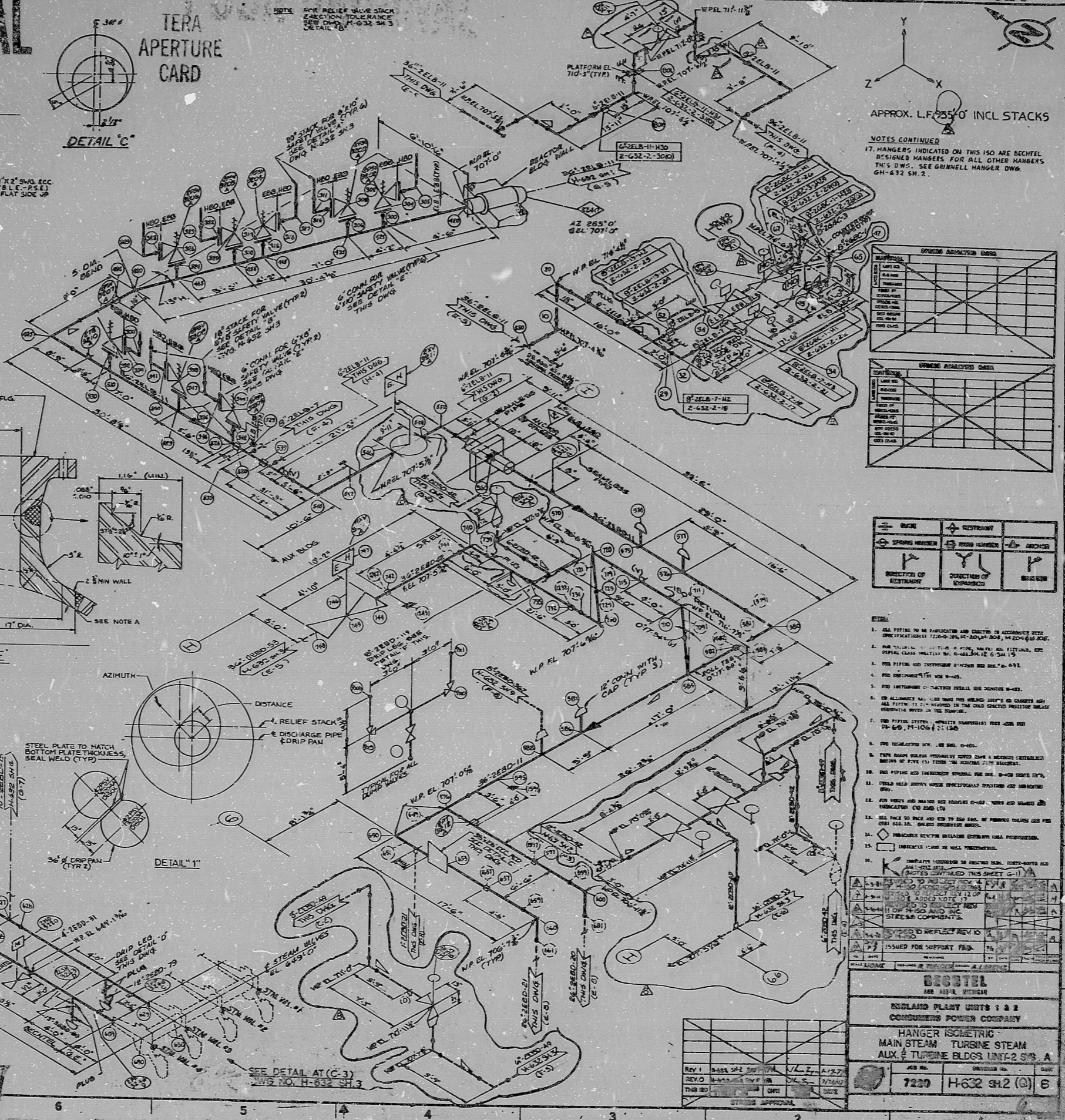
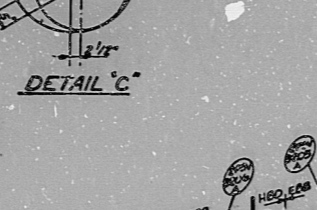


H-632 SH2 (G)

POOR ORIGINAL

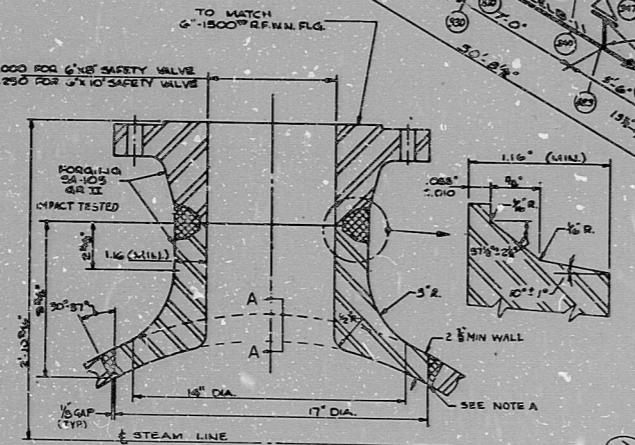


TERA APERTURE CARD

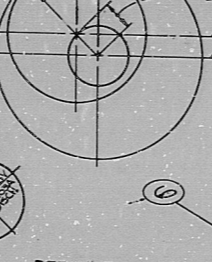


NOTE: A TRANSITION 'WELDED' AT HEADERS FROM 'APERTURE CARD' VERTICAL IN DETAIL 'E' TO '36\"/>

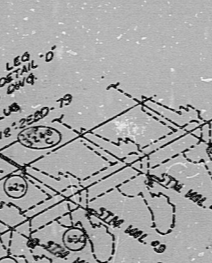
SECTION A-A



DETAIL 'E'



DETAIL 'I'



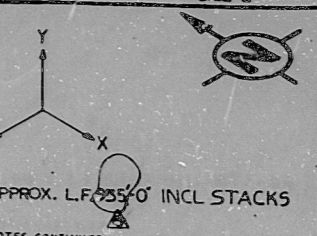
NOTE: THIS DRAWING IS THE PROPERTY OF BEchtel, IT IS TO BE USED ONLY FOR THE PROJECT AND IS NOT TO BE REPRODUCED, COPIED, OR TRANSMITTED IN ANY FORM OR BY ANY MEANS, ELECTRONIC OR MECHANICAL, INCLUDING PHOTOCOPYING, RECORDING, OR BY ANY INFORMATION STORAGE AND RETRIEVAL SYSTEM. WITHOUT THE WRITTEN PERMISSION OF BEchtel. THIS DRAWING IS THE PROPERTY OF BEchtel. IT IS TO BE USED ONLY FOR THE PROJECT AND IS NOT TO BE REPRODUCED, COPIED, OR TRANSMITTED IN ANY FORM OR BY ANY MEANS, ELECTRONIC OR MECHANICAL, INCLUDING PHOTOCOPYING, RECORDING, OR BY ANY INFORMATION STORAGE AND RETRIEVAL SYSTEM. WITHOUT THE WRITTEN PERMISSION OF BEchtel.

BEchtel and the logo contained on this frame are the trademarks and registered service marks of BEchtel, Inc. in the United States and other countries. All other marks contained herein are the property of their respective owners.

#	ELEVATION	AZIMUTH	DISTANCE
3202	220.0	330	3/4
3203	220.0	330	3/4
3204	220.0	330	3/4
3205	220.0	330	3/4
3206	220.0	330	3/4
3207	220.0	330	3/4
3208	220.0	330	3/4
3209	220.0	330	3/4

* SEE DRIP PAN DETAIL 'H' THIS DWG. (C-2)

30X



NOTES CONTINUED
17. HANGERS INDICATED ON THIS ISOMETRIC ARE BEchtel DESIGNED HANGERS FOR ALL OTHER HANGERS. T.Y. S.D.S. SEE GRINNELL HANGER DWG. C-4-632 SH. 2.

SYMBOL	DESCRIPTION
(Symbol)	STEAM VALVE
(Symbol)	DISCHARGE PIPE
(Symbol)	RELIEF STACK
(Symbol)	DRIP PAN

SYMBOL	DESCRIPTION
(Symbol)	STEAM VALVE
(Symbol)	DISCHARGE PIPE
(Symbol)	RELIEF STACK
(Symbol)	DRIP PAN

SYMBOL	DESCRIPTION
(Symbol)	STEAM VALVE
(Symbol)	DISCHARGE PIPE
(Symbol)	RELIEF STACK
(Symbol)	DRIP PAN

1. ALL PIPING TO BE FABRICATED AND INSTALLED IN ACCORDANCE WITH SPECIFICATION 17-000-001-001-001, M-2004-05-001.
2. FOR ALL PIPING TO BE INSTALLED IN ACCORDANCE WITH SPECIFICATION 17-000-001-001-001, M-2004-05-001.
3. FOR PIPING AND INSTRUMENTATION TO BE INSTALLED IN ACCORDANCE WITH SPECIFICATION 17-000-001-001-001, M-2004-05-001.
4. FOR INSTRUMENTATION TO BE INSTALLED IN ACCORDANCE WITH SPECIFICATION 17-000-001-001-001, M-2004-05-001.
5. FOR INSTRUMENTATION TO BE INSTALLED IN ACCORDANCE WITH SPECIFICATION 17-000-001-001-001, M-2004-05-001.
6. FOR ALL PIPING AND INSTRUMENTATION TO BE INSTALLED IN ACCORDANCE WITH SPECIFICATION 17-000-001-001-001, M-2004-05-001.
7. FOR ALL PIPING AND INSTRUMENTATION TO BE INSTALLED IN ACCORDANCE WITH SPECIFICATION 17-000-001-001-001, M-2004-05-001.
8. FOR ALL PIPING AND INSTRUMENTATION TO BE INSTALLED IN ACCORDANCE WITH SPECIFICATION 17-000-001-001-001, M-2004-05-001.
9. FOR ALL PIPING AND INSTRUMENTATION TO BE INSTALLED IN ACCORDANCE WITH SPECIFICATION 17-000-001-001-001, M-2004-05-001.
10. FOR ALL PIPING AND INSTRUMENTATION TO BE INSTALLED IN ACCORDANCE WITH SPECIFICATION 17-000-001-001-001, M-2004-05-001.
11. FOR ALL PIPING AND INSTRUMENTATION TO BE INSTALLED IN ACCORDANCE WITH SPECIFICATION 17-000-001-001-001, M-2004-05-001.
12. FOR ALL PIPING AND INSTRUMENTATION TO BE INSTALLED IN ACCORDANCE WITH SPECIFICATION 17-000-001-001-001, M-2004-05-001.
13. FOR ALL PIPING AND INSTRUMENTATION TO BE INSTALLED IN ACCORDANCE WITH SPECIFICATION 17-000-001-001-001, M-2004-05-001.
14. FOR ALL PIPING AND INSTRUMENTATION TO BE INSTALLED IN ACCORDANCE WITH SPECIFICATION 17-000-001-001-001, M-2004-05-001.
15. FOR ALL PIPING AND INSTRUMENTATION TO BE INSTALLED IN ACCORDANCE WITH SPECIFICATION 17-000-001-001-001, M-2004-05-001.
16. FOR ALL PIPING AND INSTRUMENTATION TO BE INSTALLED IN ACCORDANCE WITH SPECIFICATION 17-000-001-001-001, M-2004-05-001.

NO.	DATE	DESCRIPTION
1	11/17/04	ISSUED FOR SUPPORT FAB.

BEchtel AND ASSOCIATES	
ISLAND PLANT UNITS 1 & 2 CONSUMERS POWER COMPANY	
HANGER ISOMETRIC MAIN STEAM TURBINE STEAM AUX & TURBINE BLDGS. UNITS 2 S/S A	
7220	H-632 SH2 (G) B

RIPS

8112220359

