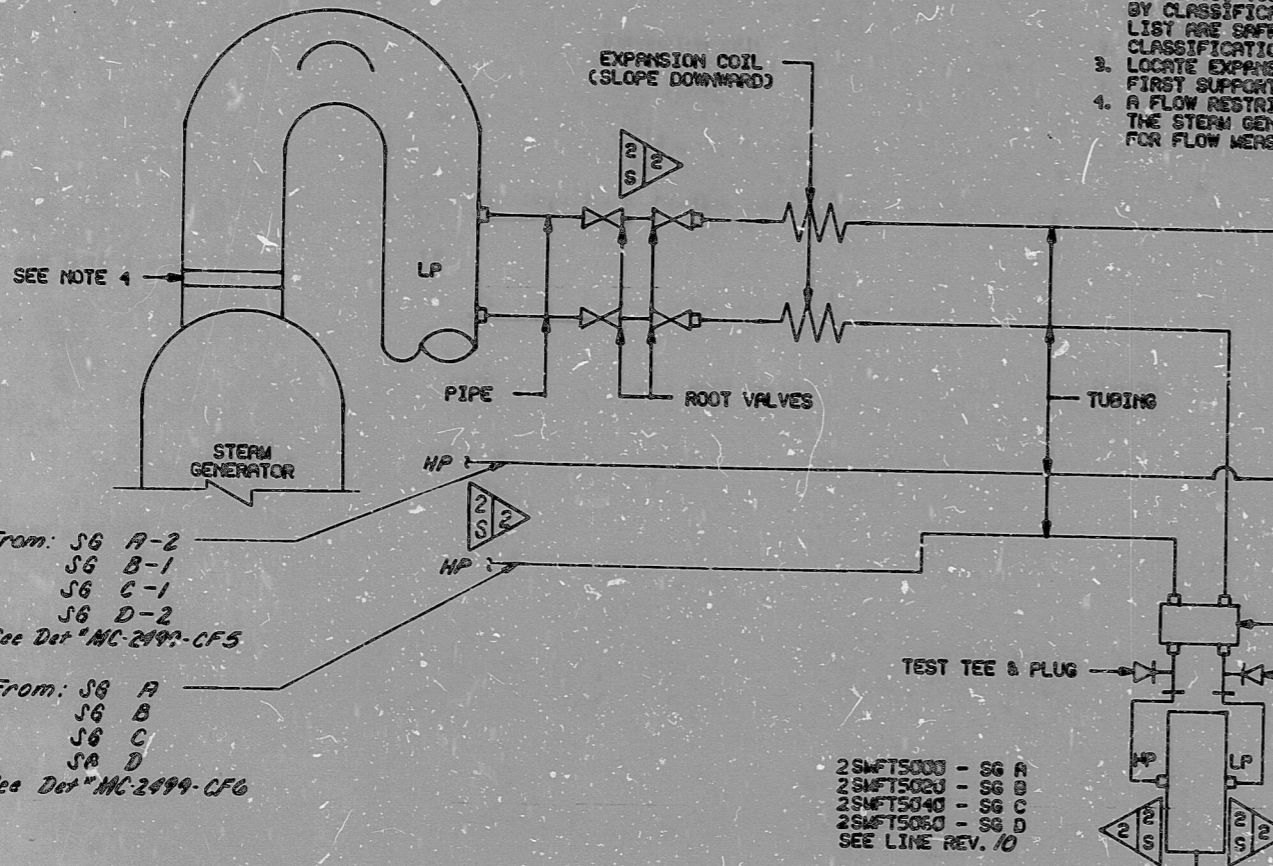


2SMFE5000 (SG-A)
 2SMFE5020 (SG-B)
 2SMFE5040 (SG-C)
 2SMFE5060 (SG-D)
 See line Rev 10



From: SG A-2
 SG B-1
 SG C-1
 SG D-2
 See Det MC-2499-CF5

From: SG A
 SG B
 SG C
 SA D
 See Det MC-2499-CF6

INSTRUMENT REDUNDANCY:

- THE FOLLOWING INSTRUMENT ARE REDUNDANT:
- A. 2SMFT5000 with 2SMFT5010
 - B. 2SMFT5020 with 2SMFT5030
 - C. 2SMFT5040 with 2SMFT5050
 - D. 2SMFT5060 with 2SMFT5070

FUNCTIONAL DESCRIPTION (FOR A APPLIES TO ALL)

2SMFT5000 AND 2SMFT5010 MONITOR MAIN STEAM FLOW FROM STEAM GENERATOR A AND PROVIDE SIGNALS TO THE PROCESS CONTROL AND PROTECTION CABINETS. FROM THESE CABINETS SIGNALS ARE SENT TO THE REACTOR CONTROL AND PROTECTION SYSTEM, THE FEEDWATER CONTROL SYSTEM, THE COMPUTER, AND REMOTE INDICATORS *SMP5000 AND 2SMP5010.

2SMFT5000 - SG A
 2SMFT5020 - SG B
 2SMFT5040 - SG C
 2SMFT5060 - SG D
 SEE LINE REV. 10

To RCPS, FWCS & 2SMP5000 (SG-A1)
 To RCPS, FWCS & 2SMP5020 (SG-B1)
 To RCPS, FWCS & 2SMP5040 (SG-C1)
 To RCPS, FWCS & 2SMP5060 (SG-D1)

NUCLEAR SAFETY RELATED EXCLUSIONS

1. FITTINGS, TUBING, PIPING, & VALVES (NOT PART OF A SAFETY RELATED PIPING SYSTEM, ETC.)

a) NONE

2. INSTRUMENTS (DO NOT SERVE A SAFETY FUNCTION)

- a) 2SMFT5000 2SMFT5040
- 2SMFT5010 2SMFT5050
- 2SMFT5020 2SMFT5060
- 2SMFT5030 2SMFT5070

b) 2SMP5000 THRU 2SMP5070

THE FOLLOWING ROOT VALVE INSTALLATIONS ARE ACCEPTABLE

INSTRUMENT	TAP TO & ELBOW	& ELBOW TO 1st ROOT VALVE	TAP TO 1st ROOT VALVE	1ST ROOT VALVE TO 2nd ROOT VALVE
2SMFT5000 (LP)	N/A	N/A	8 1/2"	4 1/2"
2SMFT5010 (LP)	N/A	N/A	8 1/2"	4 1/2"
2SMFT5020 (LP)	9"	5 1/2"	N/A	4 1/2"
2SMFT5030 (LP)	N/A	N/A	8 1/2"	4 1/2"
2SMFT5040 (LP)	9"	5 1/2"	N/A	4 1/2"
2SMFT5050 (LP)	9"	5 1/2"	N/A	4 1/2"
2SMFT5060 (LP)	9"	5 1/2"	1 1/4"	4 1/2"
2SMFT5070 (LP)	N/A	N/A	8 1/2"	4 1/2"

1ms = 0.01MPH
 20ms = 0.8MPH

1ms = 0.01MPH
 20ms = 0.8MPH

To RCPS, FWCS & 2SMP5010 (SG-A2)
 To RCPS, FWCS & 2SMP5030 (SG-B2)
 To RCPS, FWCS & 2SMP5050 (SG-C2)
 To RCPS, FWCS & 2SMP5070 (SG-D2)

QA CONDITION 1

NUCLEAR SAFETY RELATED

(EXCEPT AS EXCLUDED ABOVE)

DUKE POWER COMPANY
 MCGUIRE NUCLEAR STATION UNIT 2

INSTRUMENT DETAIL
 MAIN STEAM FLOW

AS - BUILT
 DATE 11-19-81

NO.	REVISIONS	CHKD	APPR	DATE	CIVIL	ELEC.	MECH.	INSPECTED
7	Added "As Built"							
6	Added Root Valve chart							
5	REV. AS NOTED							
4	Added Redundancy Note							
3	Revised & Redrawn							

DESIGNED: [Signature] DATE 7-15-77 INSP. DATE [Signature]
 DRAWN: [Signature] DATE 7-17-77 INSP. DATE [Signature]
 CHECKED: [Signature] DATE 9-15-77 APPR. [Signature]

DWG. NO. MC-2499-SM2 REV 7

FOR INFORMATION ONLY

SI
 APERTURE
 CARD

CL-264y6Po

SHT 2

PDR RIDS

8904050065

