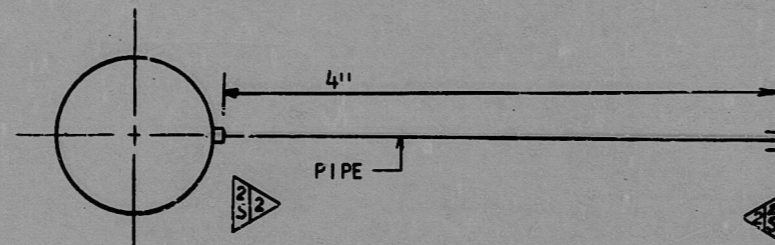


NUCLEAR SAFETY RELATED EXCLUSIONS

1. FITTINGS, TUBING, PIPING, & VALVES (NOT PART OF A SAFETY RELATED PIPING SYSTEM, ETC.)
 - a)
2. INSTRUMENTS (DO NOT SERVE A SAFETY FUNCTION)
 - a) 2CFPX6670
2CFPX6680
2CFPX6690
2CFPX6700



2CFPX6670
2CFPX6680
2CFPX6690
2CFPX6700
SEE LINE REV. 25

NOTES:

1. THE 4" DIMENSION IS INTENDED TO SHOW THAT THE SHORTEST POSSIBLE NIPPLE LENGTH IS DESIRED. A +0.5" TOLERANCE IS ALLOWABLE. ANY ASSEMBLY EXCEEDING 4.5" MUST BE APPROVED BEFORE INSTALLATION. THERE IS NO MINIMUM CRITERIA. ANY DIMENSION SHORTER THAN 4" IS ACCEPTABLE.

**Q A CONDITION 1
NUCLEAR SAFETY RELATED**

(EXCEPT AS EXCLUDED ABOVE)

						DUKE POWER COMPANY	
						MCQUIRE NUCLEAR STATION UNIT 2	
						INSTRUMENT DETAIL	
						FEEDWATER TO STEAM GENERATOR	
						PREHEATERS PRESSURE	
						TEST POINT	
1	REV. PER NSM-MG-2-179 / 00	3/11/81	1/10/81	9/1/81	N/R	RJH	DESIGNER
0	REL. FOR CONST - PER NSM-	3/11/81	1/10/81	9/1/81	N/R	RJH	DATE
ORIG.	MG-20179						DATE
NO.	REVISIONS	CHKD DATE	APPR DATE	CIVIL	ELEC.	MECH.	INSPECTED
						DWG. NO. MC-2499-CF17	
						REV.	

FOR INFORMATION ONLY

CL-2Hydro SHT 6

SI
APERTURE
CARD

PDR RIDS

8904050051

