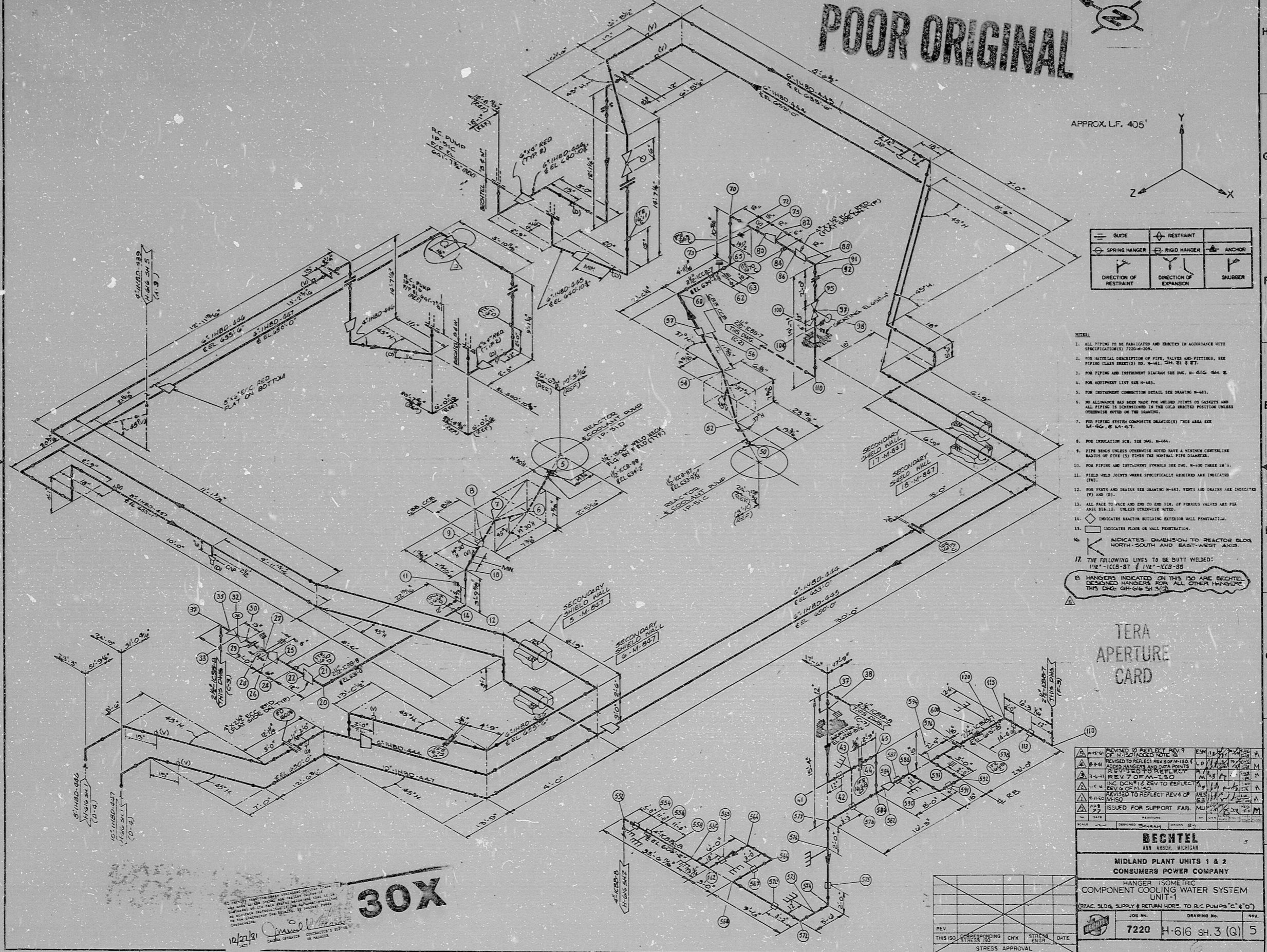


H-616 SH.3 (G)

POOR ORIGINAL

APPROX. L.F. 405'




- NOTES:
1. ALL PIPING TO BE FABRICATED AND ERRECTED IN ACCORDANCE WITH SPECIFICATIONS 7200-200.
  2. FOR MATERIAL DESCRIPTION OF PIPE, VALVES AND FITTINGS, SEE PIPING CLASS SHEET(S) NO. W-441, 304, 21 & 27.
  3. FOR PIPING AND INSTRUMENT DIMENSIONS SEE DWG. H-616, 304, 21 & 27.
  4. FOR EQUIPMENT LIST SEE H-485.
  5. FOR INSTRUMENT CONNECTION DETAIL SEE DRAWING H-481.
  6. NO ALLOWANCE HAS BEEN MADE FOR WELDED JOINTS OR SAFETY AND ALL PIPING IS DIMENSIONED IN THE LOCAL DIRECTED POSITION UNLESS OTHERWISE NOTED ON THE DRAWING.
  7. FOR PIPING SYSTEM COMPARTMENT DRAWING(S) THIS AREA SEE H-616, 304, 21 & 27.
  8. FOR EXPANSION SEE DWG. H-441.
  9. PIPE BRACKS UNLESS OTHERWISE NOTED HAVE A VERTICAL CENTERLINE MATCHES OF PIPE (S) TYPE OR PORTAL PIPE DIMENSIONS.
  10. FOR PIPING AND INSTRUMENT SYMBOLS SEE DWG. H-400 THREE SETS.
  11. FIELD WELD JOINTS UNLESS SPECIFICALLY INDICATED ARE INDICATED (W).
  12. FOR WELDS AND GRADES SEE DRAWING H-481. WELDS AND GRADES ARE INDICATED (W) AND (G).
  13. ALL FACE TO FACE AND END TO END JOINTS, IF PERMISSIBLE, ARE FACE AND BEVEL UNLESS OTHERWISE NOTED.
  14. INDICATES REACTOR BUILDING EXTERIOR WALL PENETRATION.
  15. INDICATES FLUORINE WALL PENETRATION.
  16. INDICATES DIMENSION TO REACTOR BLOC NORTH-SOUTH AND EAST-WEST AXES.
  17. THE FOLLOWING LINES TO BE BUTT WELDED: 1/2" - KCB-87 & 1/2" - KCB-85
- B. HANGERS INDICATED ON THIS DWG ARE BECTEL DESIGNED HANGERS FOR ALL OTHER HANGERS THIS DWG. 08/16/84 3/1/84

TERA APERTURE CARD

REVISION	DATE	BY	CHK	APP
1	10/27/81	...	...	...
2	...	...	...	...
3	...	...	...	...
4	...	...	...	...
5	...	...	...	...
6	...	...	...	...
7	...	...	...	...
8	...	...	...	...
9	...	...	...	...
10	...	...	...	...

**BECTEL**  
ANN ARBOR, MICHIGAN

**MIDLAND PLANT UNITS 1 & 2**  
**CONSUMERS POWER COMPANY**

HANGER ISOMETRIC  
COMPONENT COOLING WATER SYSTEM  
UNIT-1

(ORAC, SLO, SUPPLY & RETURN MORE TO R.C. PUMPS "C" & "D")

JOB NO. **7220** DRAWING NO. **H-616 SH.3 (G)** REV. **5**

DESIGNED BY: \_\_\_\_\_ CHECKED BY: \_\_\_\_\_ DATE: \_\_\_\_\_

STRESS APPROVAL: \_\_\_\_\_

30X

This drawing and the design it covers are the property of BECTEL. They are being loaned to you for your information and use only. They are not to be reproduced, copied, or used in any way without the express written permission of BECTEL.

8.5" 11" 17"

8.5" 11" 17"

RIDS

8112220297

