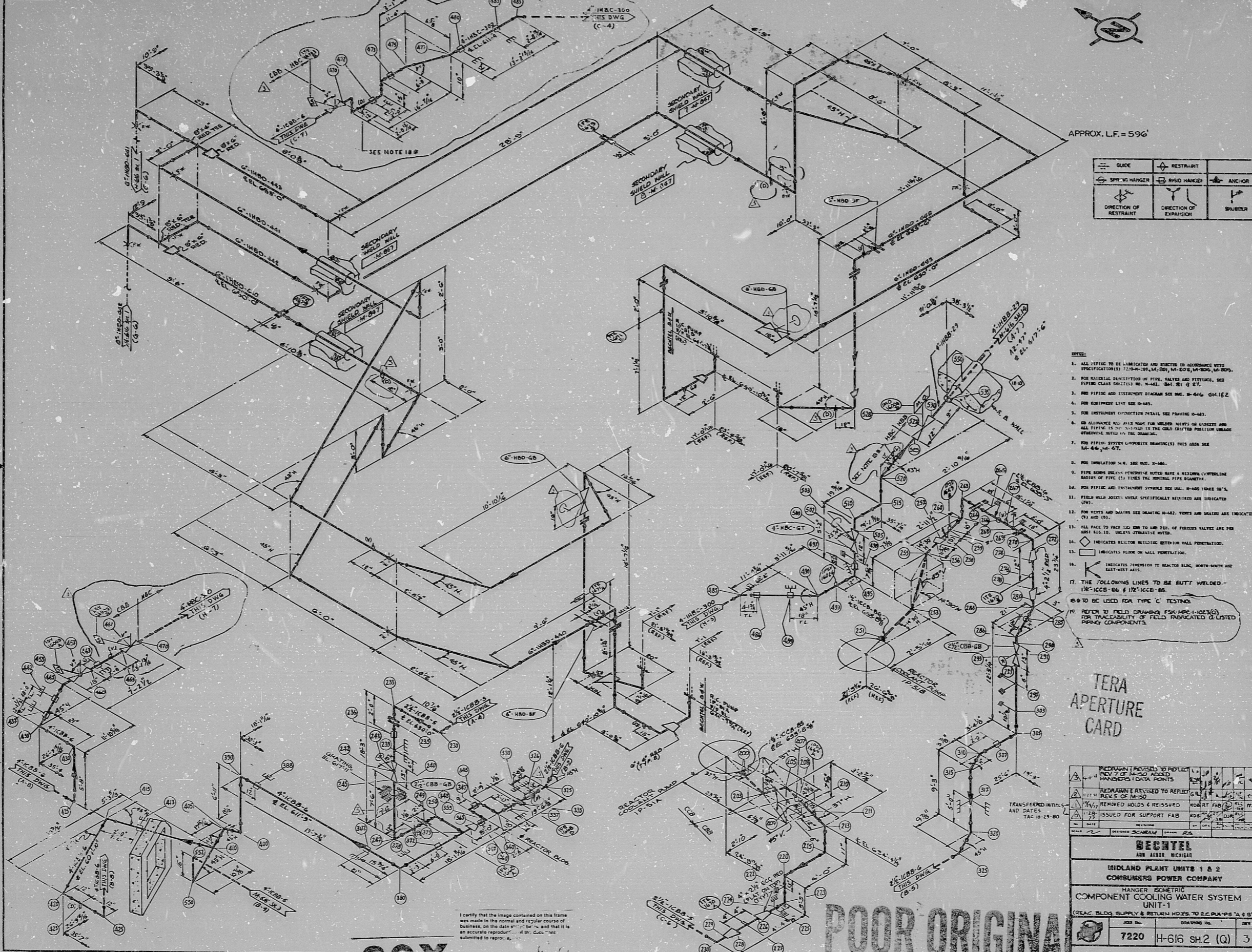


H-616 SH2 (Q)

SIZE B



APPROX. L.F. = 596'

- NOTES:**
1. ALL PIPING TO BE INDICATED AND INSTALLED IN ACCORDANCE WITH SPECIFICATIONS 7200-00, 01, 02, 03, 04, 05, 06, 07, 08, 09, 10, 11, 12, 13, 14, 15, 16, 17, 18, 19, 20, 21, 22, 23, 24, 25, 26, 27, 28, 29, 30, 31, 32, 33, 34, 35, 36, 37, 38, 39, 40, 41, 42, 43, 44, 45, 46, 47, 48, 49, 50, 51, 52, 53, 54, 55, 56, 57, 58, 59, 60, 61, 62, 63, 64, 65, 66, 67, 68, 69, 70, 71, 72, 73, 74, 75, 76, 77, 78, 79, 80, 81, 82, 83, 84, 85, 86, 87, 88, 89, 90, 91, 92, 93, 94, 95, 96, 97, 98, 99, 100.
 2. FOR MATERIAL SPECIFICATIONS OF PIPE, VALVES AND FITTINGS, SEE PIPING CLASS SPECIFICATIONS NO. M-100, 101, 102, 103, 104, 105, 106, 107, 108, 109, 110, 111, 112, 113, 114, 115, 116, 117, 118, 119, 120, 121, 122, 123, 124, 125, 126, 127, 128, 129, 130, 131, 132, 133, 134, 135, 136, 137, 138, 139, 140, 141, 142, 143, 144, 145, 146, 147, 148, 149, 150, 151, 152, 153, 154, 155, 156, 157, 158, 159, 160, 161, 162, 163, 164, 165, 166, 167, 168, 169, 170, 171, 172, 173, 174, 175, 176, 177, 178, 179, 180, 181, 182, 183, 184, 185, 186, 187, 188, 189, 190, 191, 192, 193, 194, 195, 196, 197, 198, 199, 200.
 3. FOR PIPING AND INSTRUMENT DIAGRAMS SEE SPEC. NO. 644, 644.1, 644.2.
 4. FOR EQUIPMENT LIST SEE M-445.
 5. FOR INSTRUMENT CONNECTIONS SEE DRAWING M-447.
 6. ALL ALLOWANCE ALL WELDING FOR WELDED JOINTS OR GASKETS AND ALL FITTINGS TO BE WELDED IN THE FIELD EXCEPT POSITION UNLESS OTHERWISE NOTED BY THE DRAWING.
 7. FOR PIPING SYSTEM COMPOSITE DRAWINGS THIS AREA SEE M-446, 446.1, 446.2.
 8. FOR INSULATION W.R. SEE SPEC. M-448.
 9. PIPE BENDS SHALL BE WELDED BUTT HAVE A MINIMUM CIRCUMFERENCE RADIUS OF PIPE (1) TIMES THE NOMINAL PIPE DIAMETER.
 10. FOR PIPING AND INSTRUMENT SYMBOLS SEE SPEC. M-446, 446.1, 446.2.
 11. FIELD WELD JOINTS UNLESS SPECIFICALLY NOTED ARE INDICATED (WJ).
 12. FOR VENTS AND DRAINS SEE DRAWING M-447. VENTS AND DRAINS ARE INDICATED (V) AND (D).
 13. ALL PIPING TO FACE AND END TO END OF OF FLEXIBLE VALVES ARE PER SPEC. M-110, UNLESS OTHERWISE NOTED.
 14. INDICATES REACTOR BUILDING PENETRATION.
 15. INDICATES FLOOR OR WALL PENETRATION.
 16. INDICATES DIMENSION TO REACTOR BLDG. NORTH-SOUTH AND EAST-WEST AXIS.
 17. THE FOLLOWING LINES TO BE BUTT WELDED - 1/2\"/>
 18. TO BE USED FOR TYPE C TESTING.
 19. REFER TO FIELD DRAWINGS FOR M-446, 446.1, 446.2 FOR TRACEABILITY OF FIELD INDICATED & LISTED PIPING COMPONENTS.

TERA APERTURE CARD

	REVISION	DATE	BY	CHKD
	REVISION	DATE	BY	CHKD
	REVISION	DATE	BY	CHKD
	REVISION	DATE	BY	CHKD
	REVISION	DATE	BY	CHKD

BECHTEL 1300 AVENUE		
MIDLAND PLANT UNITS 1 & 2 CONSUMERS POWER COMPANY		
HANGER ISOMETRIC COMPONENT COOLING WATER SYSTEM UNIT-1		
REACTOR DOME COOLING PIPING TO REACTOR DOME		
JOB NO.	DRAWING NO.	REV.
7220	H-616 SH2 (Q)	3

I certify that the image contained on this frame was made in the normal and regular course of business, on the date 8-1-80, and that it is an accurate reproduction of the original submitted for reproduction.

30X

POOR ORIGINAL

11

8.5

8.5

11

17

11

8.5

8.5

11

17

RIDS

8112220294

