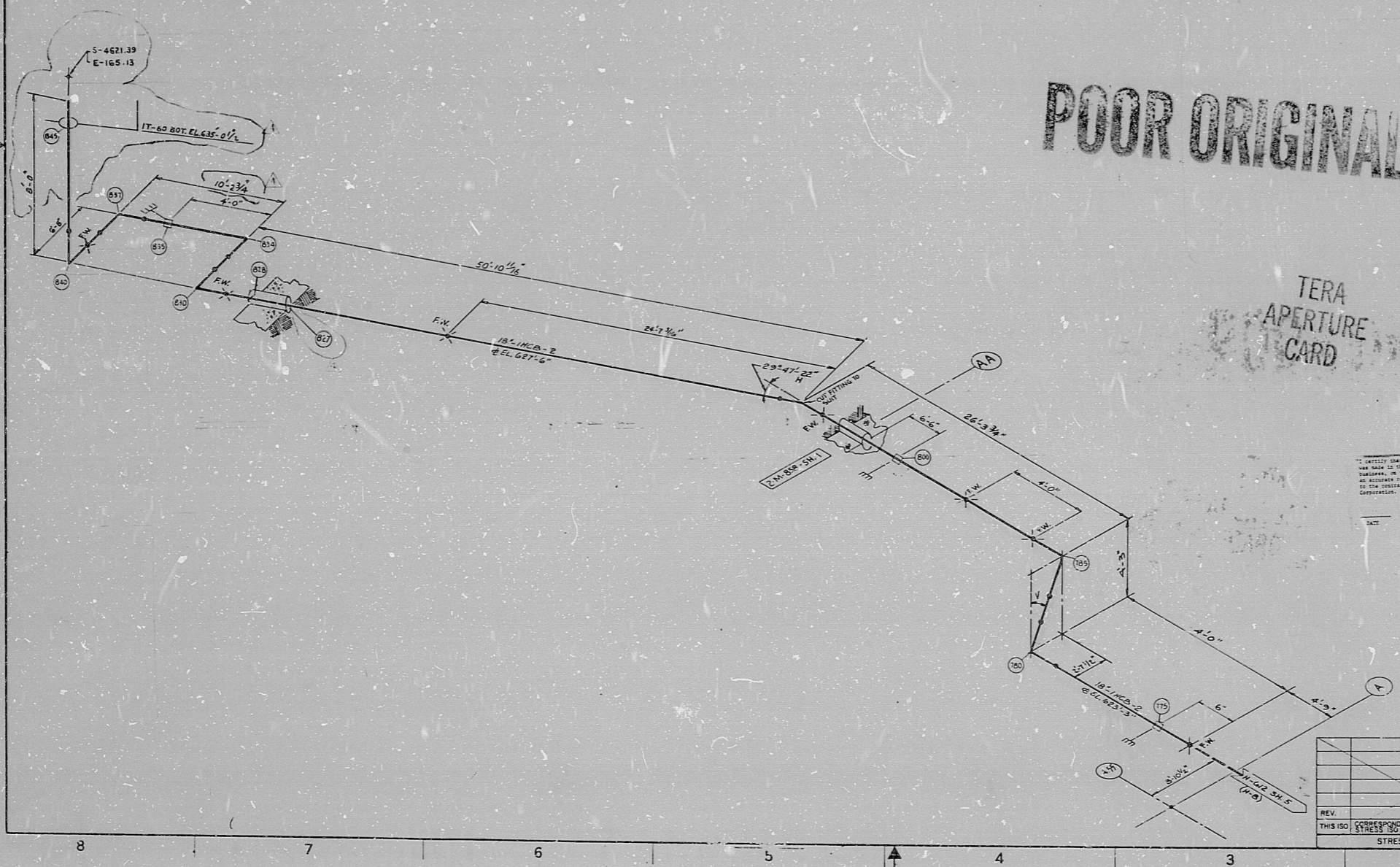


H-612 SH.7(Q)

3/22/82

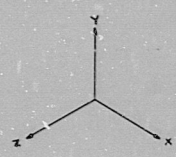


This drawing and all designs are the property of BECHTEL. Their use is limited to the project for which they were prepared and no other use is permitted without the written consent of BECHTEL.



POOR ORIGINAL

TERA APERTURE CARD



APPROX LF 110

- NOTES:
1. ALL PIPING TO BE FABRICATED AND ERRECTED IN ACCORDANCE WITH SPECIFICATION(S) 7220-M-209
 2. FOR MATERIAL DESCRIPTION OF PIPES, VALVES AND FITTINGS, SEE PIPING CLASS SPECIFICATION NO. M-441.
 3. FOR PIPING AND INSTRUMENT SYMBOLS SEE DSG. M-412
 4. FOR EQUIPMENT LIST SEE M-443.
 5. FOR INSTRUMENT CONNECTION DETAILS SEE DRAWING M-444.
 6. NO ALLOWANCE HAS BEEN MADE FOR WELDED JOINTS OR GASKETS AND ALL PIPING IS DIMENSIONED IN THE UNDO ORATED POSITIONS UNLESS OTHERWISE NOTED ON THE DRAWING.
 7. FOR PIPING SYSTEM COMPOSITE DRAWING(S) THIS AREA SEE M-58 SH. 1.
 8. FOR INSULATION SCH. SEE DSG. M-444.
 9. PIPE BRIDS UNLESS OTHERWISE NOTED HAVE A MINIMUM CENTERLINE SPACING OF FIVE (5) TIMES THE NOMINAL PIPE DIAMETER.
 10. FOR PIPING AND INSTRUMENT SYMBOLS SEE DSG. M-409 (PART 1 & 2)
 11. FIELD WELD JOINTS WHERE SPECIFICALLY REQUIRED ARE INDICATED (FW)
 12. FOR VERTS AND DRAINS SEE DSG. M-444. VERTS AND DRAINS ARE INDICATED (V) AND (D)
 13. ALL FACE TO FACE AND END TO END JOINTS OF FLANGES VALVES AND PIPES ARE 180.00 UNLESS OTHERWISE NOTED.
 14. INDICATES ALL FACE TO FACE AND END TO END JOINTS OF FLANGES VALVES AND PIPES ARE 180.00 UNLESS OTHERWISE NOTED.
 15. INDICATES FLOOR OR WALL PENETRATION.

It is hereby stated that the design contained on this drawing was prepared by the design and project engineer of BECHTEL, INC. on the date stated herein and that it is the professional responsibility of the engineer, architect or the contractor for the design, to the extent of their respective professional responsibilities.

DATE: 3/22/82 DESIGNER: [Signature] CHECKER: [Signature] CONTRACTOR'S REVIEW: [Signature]

30X

NO.	DATE	REVISION	BY	CHKD	APP'D
1		REVISED TO REFLECT REV. 1 OF M-150	[Signature]	[Signature]	[Signature]
2		DELETED NOTE 10	[Signature]	[Signature]	[Signature]
3		REVISED TO REFLECT REV. 1 OF M-150	[Signature]	[Signature]	[Signature]
4		REVISED TO REFLECT REV. 1 OF M-150	[Signature]	[Signature]	[Signature]
5		REVISED TO REFLECT REV. 1 OF M-150	[Signature]	[Signature]	[Signature]
6		ISSUED FOR SUPPORT FAB.	[Signature]	[Signature]	[Signature]

BECHTEL
ANN ARBOR, MICHIGAN

MIDLAND PLANT UNITS 1 & 2
CONSUMERS POWER COMPANY

HANGER ISOMETRIC
BORATED WATER AND CHEMICAL SUPPLY
SYSTEM "A" UNIT-1

JOB No. 7220 DRAWING No. H-612 SH.7(Q) REV. 4

REV.	DATE	BY	CHKD	APP'D
1		[Signature]	[Signature]	[Signature]
2		[Signature]	[Signature]	[Signature]
3		[Signature]	[Signature]	[Signature]
4		[Signature]	[Signature]	[Signature]
5		[Signature]	[Signature]	[Signature]
6		[Signature]	[Signature]	[Signature]

STRESS APPROVAL

71

11

8.5"

8.5"

11"

17"

71

11

8.5"

8.5"

11"

17"

RIDS

8112220280

