

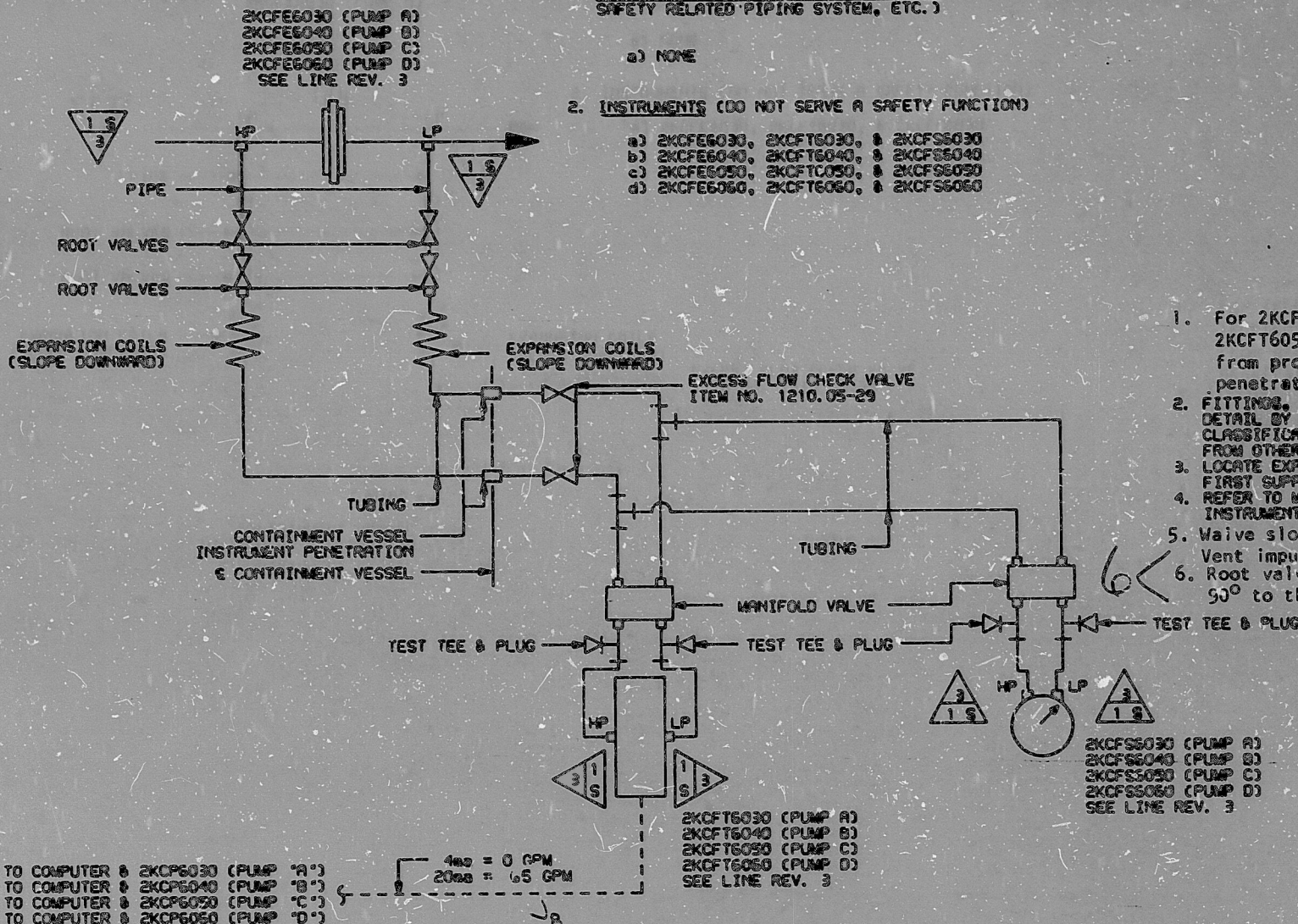
NUCLEAR SAFETY RELATED EXCLUSIONS

1. FITTINGS, TUBINGS, PIPING, & VALVES (NOT PART OF A SAFETY RELATED PIPING SYSTEM, ETC.)

a) NONE

2. INSTRUMENTS (DO NOT SERVE A SAFETY FUNCTION)

- a) 2KCFE6030, 2KCFE6030, & 2KCFE6030
- b) 2KCFE6040, 2KCFE6040, & 2KCFE6040
- c) 2KCFE6050, 2KCFE6050, & 2KCFE6050
- d) 2KCFE6060, 2KCFE6060, & 2KCFE6060



1. For 2KCFE6030, 2KCFE6040, 2KCFE6050, 2KCFE6060, 2KCFE6030 and 2KCFE6050 slope impulse line downward from process to a point below instrument, thru wall penetration, then up to instrument. Vent at test tees.
2. FITTINGS, TUBINGS, AND VALVES DESIGNATED ON THIS DETAIL BY CLASSIFICATION IS OF THE FITTINGS CLASSIFICATION LIST ARE SAFETY CLASS. SUBSTITUTES FROM OTHER CLASSIFICATIONS ARE NOT PERMITTED.
3. LOCATE EXPANSION COILS BETWEEN THE ROOT VALVE AND FIRST SUPPORT BRACKET.
4. REFER TO MC-1499-WIZ FOR CONTAINMENT VESSEL INSTRUMENT PENETRATION DETAIL.
5. Waive slope requirements on 2KCFE6060 and 2KCFE6060. Vent impulse line at vents provided on instrument.
6. Root valve on L.P. side of 2KCFE6030 is to be rotated 90° to the straight up position.

QA CONDITION 1

NUCLEAR SAFETY RELATED

(EXCEPT AS EXCLUDED ABOVE)

FUNCTIONAL DESCRIPTIONS (FOR PUMP 'A' APPLIES TO OTHERS)

2KCFE6030 & 2KCFE6030 MONITOR OUTLET FLOW FROM THE RCP THERMAL BARRIER. 2KCFE6030 PROVIDES INPUTS TO THE COMPUTER AND 2KCP6030 (LOCATED ON A.G. LOCAL PANEL). 2KCFE6030 PROVIDES ALARMS ON HIGH AND LOW FLOW, AND ALSO, ON HIGH FLOW CLOSES MOV 2KC394A (2KCFE6040 - PUMP 'B', 2KC345A - PUMP 'C', & 2KC413B - PUMP 'D') AS THIS IS AN INDICATION THAT THE THERMAL BARRIER HAS FAILED.

AS-BUILT
DATE 9-15-81

REV. 6 AS PER VU#23,111

				DUKE POWER COMPANY			
				MCGUIRE NUCLEAR STATION UNIT 2			
				INSTRUMENT DETAILS			
				REACTOR COOLANT PUMP			
				THERMAL BARRIER OUTLET FLOW			
8.	REV GPM AS NOTED - IPR - OKC - 2						
7.	Add Stamp						
6.	Added note 6						
5.	Rev. Mark No. in Note 5.						
4.	Rev. Note 1						
3.	Rev. Instrument No.s						
2.	Added Note 5						
1.	REL. FOR CONCT.						
ORIG.	PUBLISHED						
NO.	REVISIONS	CHKD	APPR	DATE	CIVIL	ELEC.	MECH.
							INSPECTED
					SCALE	DWG. NO. MC-2499-KC31	
							REV 3

FOR INFORMATION ONLY

CL2 Hydr SHZ

SI
APERTURE
CARD

PDR RIDS

8904050019

