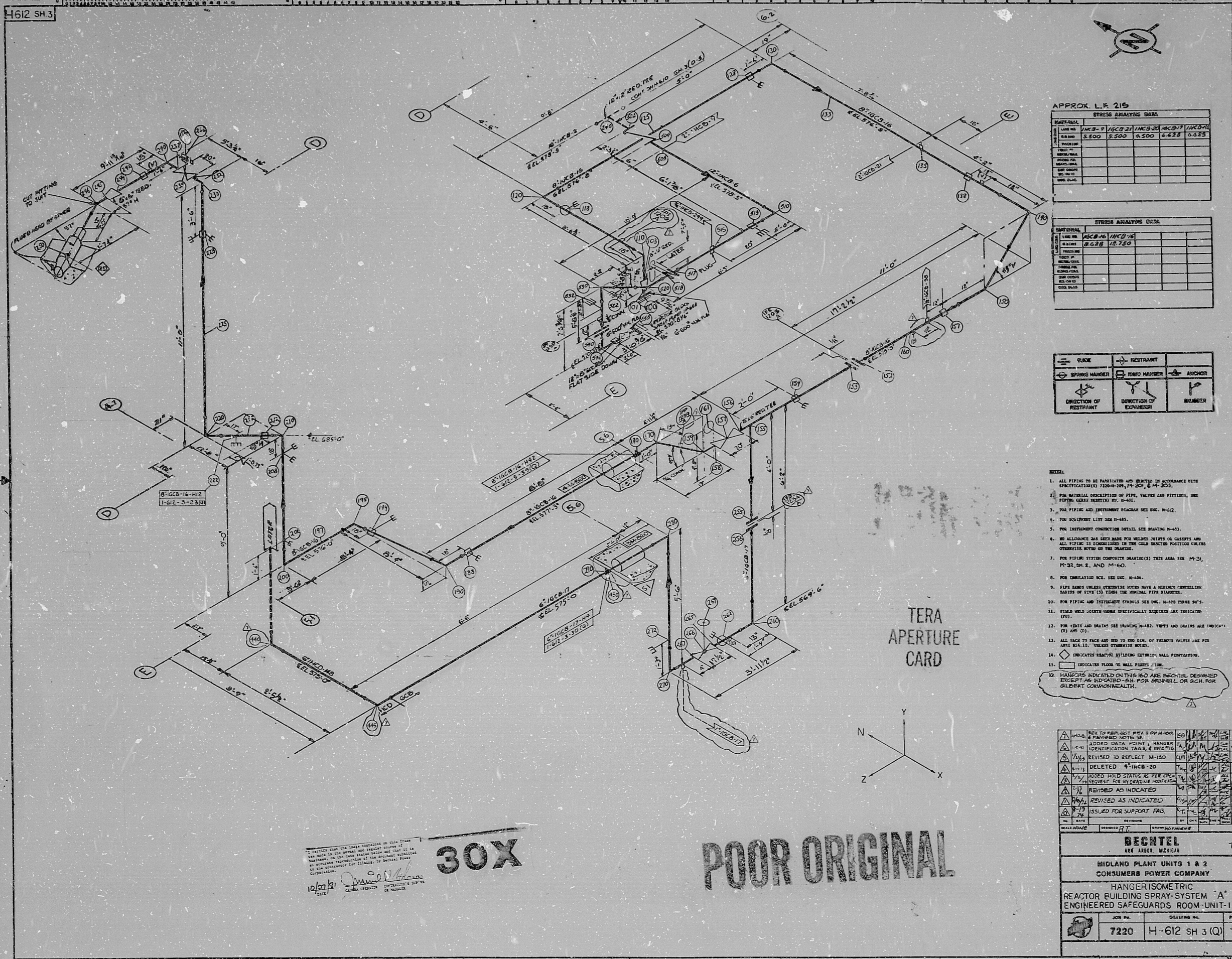


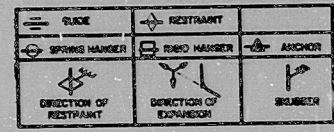
H612 SH 3



APPROX. L.F. 215

STRESS ANALYSIS DATA					
UNIT-NO.	UNIT-NO.	UNIT-NO.	UNIT-NO.	UNIT-NO.	UNIT-NO.
1	2	3	4	5	6
7	8	9	10	11	12
13	14	15	16	17	18
19	20	21	22	23	24
25	26	27	28	29	30
31	32	33	34	35	36
37	38	39	40	41	42
43	44	45	46	47	48
49	50	51	52	53	54
55	56	57	58	59	60
61	62	63	64	65	66
67	68	69	70	71	72
73	74	75	76	77	78
79	80	81	82	83	84
85	86	87	88	89	90
91	92	93	94	95	96
97	98	99	100	101	102
103	104	105	106	107	108
109	110	111	112	113	114
115	116	117	118	119	120
121	122	123	124	125	126
127	128	129	130	131	132
133	134	135	136	137	138
139	140	141	142	143	144
145	146	147	148	149	150
151	152	153	154	155	156
157	158	159	160	161	162
163	164	165	166	167	168
169	170	171	172	173	174
175	176	177	178	179	180
181	182	183	184	185	186
187	188	189	190	191	192
193	194	195	196	197	198
199	200	201	202	203	204
205	206	207	208	209	210
211	212	213	214	215	216
217	218	219	220	221	222
223	224	225	226	227	228
229	230	231	232	233	234
235	236	237	238	239	240
241	242	243	244	245	246
247	248	249	250	251	252
253	254	255	256	257	258
259	260	261	262	263	264
265	266	267	268	269	270
271	272	273	274	275	276
277	278	279	280	281	282
283	284	285	286	287	288
289	290	291	292	293	294
295	296	297	298	299	300

STRESS ANALYSIS DATA					
UNIT-NO.	UNIT-NO.	UNIT-NO.	UNIT-NO.	UNIT-NO.	UNIT-NO.
1	2	3	4	5	6
7	8	9	10	11	12
13	14	15	16	17	18
19	20	21	22	23	24
25	26	27	28	29	30
31	32	33	34	35	36
37	38	39	40	41	42
43	44	45	46	47	48
49	50	51	52	53	54
55	56	57	58	59	60
61	62	63	64	65	66
67	68	69	70	71	72
73	74	75	76	77	78
79	80	81	82	83	84
85	86	87	88	89	90
91	92	93	94	95	96
97	98	99	100	101	102
103	104	105	106	107	108
109	110	111	112	113	114
115	116	117	118	119	120
121	122	123	124	125	126
127	128	129	130	131	132
133	134	135	136	137	138
139	140	141	142	143	144
145	146	147	148	149	150
151	152	153	154	155	156
157	158	159	160	161	162
163	164	165	166	167	168
169	170	171	172	173	174
175	176	177	178	179	180
181	182	183	184	185	186
187	188	189	190	191	192
193	194	195	196	197	198
199	200	201	202	203	204
205	206	207	208	209	210
211	212	213	214	215	216
217	218	219	220	221	222
223	224	225	226	227	228
229	230	231	232	233	234
235	236	237	238	239	240
241	242	243	244	245	246
247	248	249	250	251	252
253	254	255	256	257	258
259	260	261	262	263	264
265	266	267	268	269	270
271	272	273	274	275	276
277	278	279	280	281	282
283	284	285	286	287	288
289	290	291	292	293	294
295	296	297	298	299	300



- NOTES:
1. ALL PIPING TO BE FABRICATED AND INSTALLED IN ACCORDANCE WITH SPECIFICATIONS (S) 7100-109, M-201, & M-204.
 2. FOR MATERIAL DESCRIPTION OF PIPE, VALVES AND FITTINGS, SEE TYPE CODE SCHEDULES (S) 7100-109.
 3. FOR FITTING AND INSTRUMENT DIAGRAMS SEE ENG. W-612.
 4. FOR INSTRUMENT LIST SEE W-485.
 5. FOR INSTRUMENT CONNECTIONS SEE ENG. W-485.
 6. NO ALLOWANCE HAS BEEN MADE FOR WELDED JOINTS OR GASKETS AND ALL PIPING IS DIMENSIONED TO THE CENTER LINE UNLESS OTHERWISE NOTED.
 7. FOR PIPE SYSTEM COMPONENTS (SCHEDULES) TYPE AREA SEE M-31, M-31.2, AND M-60.
 8. FOR DIMENSIONS SEE ENG. W-484.
 9. PIPE HANGERS UNLESS OTHERWISE NOTED HAVE A MINIMUM CARRIER SPACING OF FIVE (5) FEET FROM THE TERMINAL PIPE DIAMETER.
 10. FOR PIPING AND INSTRUMENT SYMBOLS SEE ENG. W-485 TUBE SHEET.
 11. FIELD WELD JOINTS UNLESS SPECIFICALLY NOTED ARE INDICATED (W).
 12. FOR VENTS AND DRAINS SEE DRAWING W-482. VENTS AND DRAINS ARE INDICATED (V) AND (D).
 13. ALL FACE TO FACE AND END TO END DIM. OF VALVES AND FITTINGS ARE PER ANSI B16.10. THESE DIMENSIONS APPLY.
 14. DIAMETER INDICATED BY THE LETTERS (D) AND (D1) INDICATE WALL THICKNESS.
 15. INDICATED FLOOR TO WALL HEIGHTS (F).
 16. HANGERS INDICATED ON THIS DRAWING ARE BEING DESIGNED EXCEPT AS INDICATED - SH FOR SH-ROCKWELL OR SGH FOR GLEBEK COMMONWEALTH.

NO.	DESCRIPTION	DATE	BY	CHKD.
1	REV TO REFLECT REV II OF W-600	11/15/71	JT	W
2	ADDED DATA POINTS, HANGERS IDENTIFICATION TAGS, & INSTRUMENT TAGS	11/15/71	JT	W
3	REVISED TO REFLECT M-150	11/15/71	JT	W
4	DELETED 4" INCB-20	11/15/71	JT	W
5	ADDED HOLD STATUS AS PER PROC. IN SCHEDULE FOR AT-SCHEDULE HOLDING	11/15/71	JT	W
6	REVISED AS INDICATED	11/15/71	JT	W
7	REVISED AS INDICATED	11/15/71	JT	W
8	ISSUED FOR SUPPORT FAB.	11/15/71	JT	W
9	REVISED	11/15/71	JT	W
10	REVISED	11/15/71	JT	W

BECHTEL
ANN ARBOR, MICHIGAN

BIDLAND PLANT UNITS 1 & 2
CONSUMERS POWER COMPANY

HANGER ISOMETRIC
REACTOR BUILDING SPRAY-SYSTEM "A"
ENGINEERED SAFEGUARDS ROOM-UNIT-1

JOB NO.	DRAWING NO.	REV.
7220	H-612 SH 3 (Q)	7

30X

POOR ORIGINAL

8.5"
11"
17"

8.5"
11"
17"

RIPS

8112220273

