

11

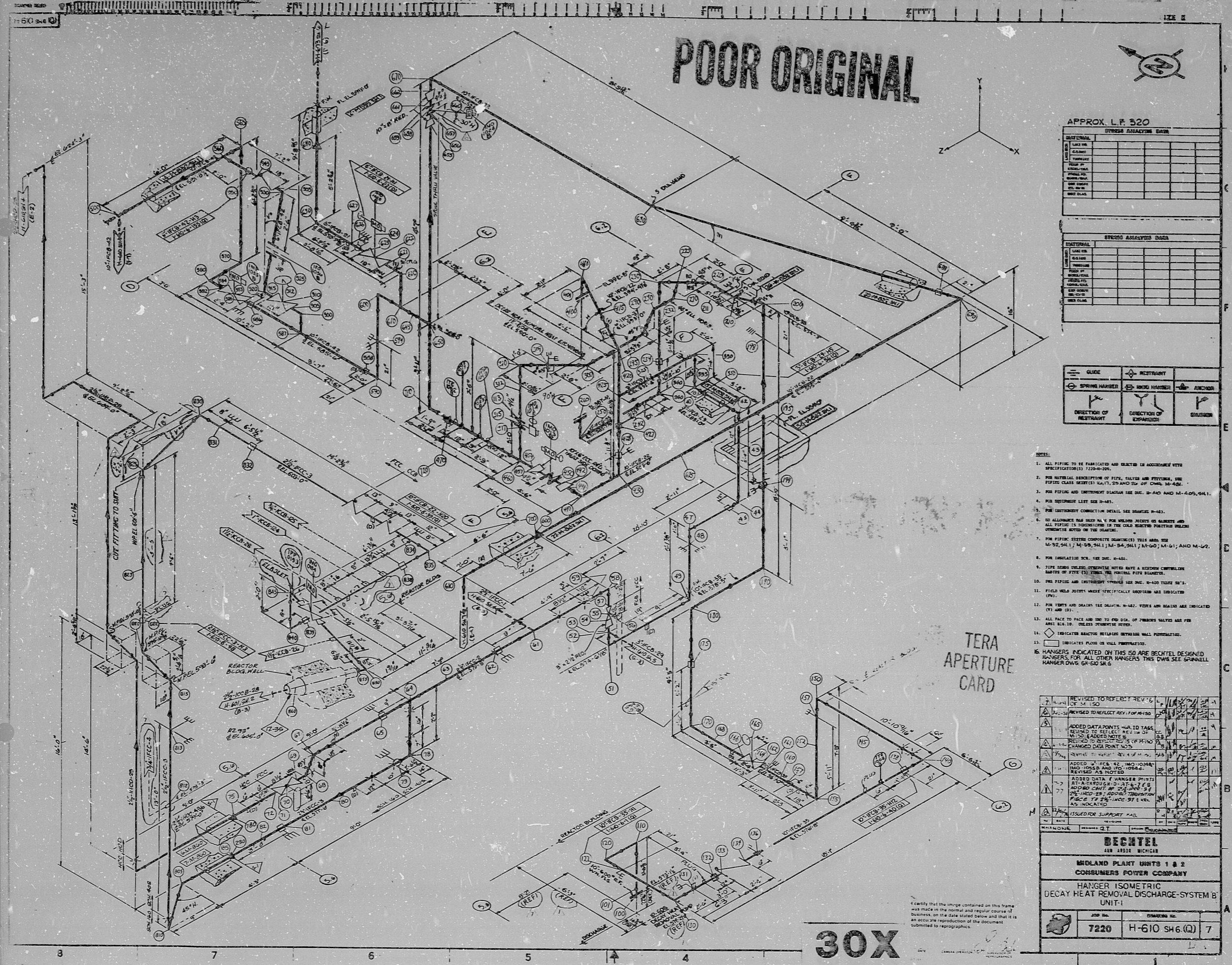
11

8.5"

8.5"

11"

17"



POOR ORIGINAL

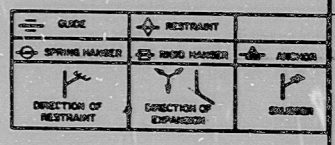
APPROX. L.F. 320

HYDRO ANALYSIS DATA

STATIONAL	DATE	ANALYST	RESULTS

STRUCTURAL ANALYSIS DATA

STATIONAL	DATE	ANALYST	RESULTS



- NOTES:
- ALL PIPING TO BE FABRICATED AND ERECTED IN ACCORDANCE WITH SPECIFICATIONS 1000-100.
 - FOR MATERIAL DESCRIPTIONS OF FITS, VALVES AND FITTINGS, SEE FITTING CLASS SPECIFICATIONS 10, 11, 25 AND 26 OF CODE M-48.
 - FOR FITTING AND INSTRUMENT SYMBOLS SEE DSG. M-40 AND M-40B, M-41.
 - FOR EQUIPMENT LIST SEE M-42.
 - FOR INSTRUMENT CONNECTION DETAIL SEE DRAWING M-43.
 - TO ALLOWANCE FOR SHIP IN V FOR WELDED JOINTS OR GRAPHS AND ALL TYPING IS TO BE COMPLETED IN THE FIELD SUBJECT TO THE FOLLOWING OTHERWISE NOTED ON THE DRAWING.
 - FOR PIPING SYSTEMS COMPLETE DRAWINGS (S) THIS AND SEE M-32, M-33, M-34, M-35, M-36, M-37, M-38, M-39, M-40, M-41, AND M-42.
 - FOR DIMENSIONS SEE DSG. M-43.
 - TYPE JOINTS UNLESS OTHERWISE NOTED HAVE A BEVELING CORRELATIVE RADIUS OF FIVE (5) TIMES THE ORIGINAL PIPE RADIUS.
 - THE PIPING AND INSTRUMENT SYMBOLS SEE DSG. M-40 THROUGH M-41.
 - FIELD WELD JOINTS UNLESS SPECIFICALLY NOTED ARE INDICATED (W).
 - FOR WELDS AND DRAINS SEE DRAWING M-42. WELDS AND DRAINS ARE INDICATED (W) AND (D).
 - ALL FACE TO FACE AND END TO END OF TUBES VALVES ARE PER ANSI B16.3. UNLESS OTHERWISE NOTED.
 - INDICATE REACTOR BUILDING STRUCTURE WALL PORTALS.
 - INDICATES FLOOR OR WALL PORTALS.
 - HANGERS INDICATED ON THIS ISOMETRIC ARE BEHTEL DESIGNED HANGERS FOR ALL OTHER HANGERS THIS DWG. SEE SPINWALL HANGER DWG. M-60 S4.6

TERA APERTURE CARD

NO.	DESCRIPTION	DATE	BY	CHKD.
1	REVISED TO REFLECT REV. OF M-150	1/11/50		
2	REVISED TO REFLECT REV. OF M-150	1/11/50		
3	ADDED DATAPoints FOR TASK			
4	REVISED TO REFLECT REV. OF M-150			
5	REVISED TO REFLECT REV. OF M-150			
6	REVISED TO REFLECT REV. OF M-150			
7	ADDED M-150, 42, 43, 44, 45, 46, 47, 48, 49, 50, 51, 52, 53, 54, 55, 56, 57, 58, 59, 60, 61, 62, 63, 64, 65, 66, 67, 68, 69, 70, 71, 72, 73, 74, 75, 76, 77, 78, 79, 80, 81, 82, 83, 84, 85, 86, 87, 88, 89, 90, 91, 92, 93, 94, 95, 96, 97, 98, 99, 100			
8	ADDED DATA FOR HANGER PHOTOS			
9	REVISED TO REFLECT REV. OF M-150			
10	REVISED TO REFLECT REV. OF M-150			
11	ISSUED FOR SUPPORT			

BECHTEL
480 1922 MICHIGAN

MIDLAND PLANT UNITS 1 & 2
CONSUMERS POWER COMPANY

HANGER ISOMETRIC
DECAY HEAT REMOVAL DISCHARGE SYSTEM B
UNIT-1

7220	H-610 SH6 (Q)	7
------	---------------	---

30X

11

11

8.5"

8.5"

11"

17"

RIDS

8112220239

