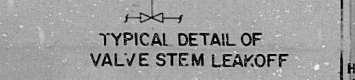
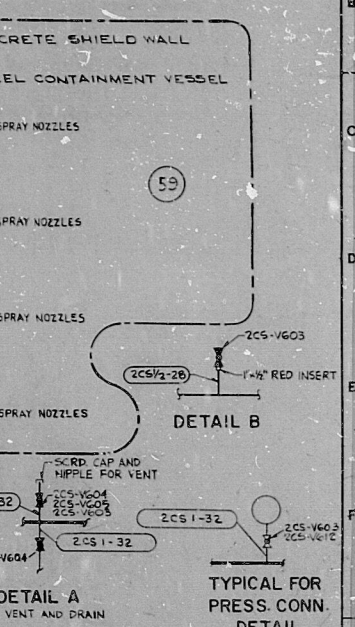


LOU-1564-G-163

SYSTEM TRANSFER DESIGN

THIS DRAWING HAS BEEN MADE UP TO SHOW THE BOUNDARIES FOR SYSTEM TRANSFERS TO LPAI PLANT START. NO WORK IS TO BE PERFORMED WITHIN THE INDICATED BOUNDARIES PRIOR TO LPAI APPROVAL.

REVISION	BY	CHK	SYSTEM TRANSFER
ST 0	RR	WJL	53A, 53B, 71B
ST 1	RR	WJL	53A, 52
ST 2	RR	WJL	53A, 52, 61



- NOTES:
1. VALVE STEM LEAKOFFS TO BE RUN IN FIELD TO PLUMBING EQUIPMENT DRAIN LEAKOFFS TO BE 1/2" SCH 80 SST PIPE (LINE P-205) (S).
 2. LEAKOFFS TO BE IDENTIFIED WITH THE FOLLOWING CODE LETTERS REQUIRE CLASS I.E. POWER SOURCE: CODE: [SA], [SB], [SC], [SD], [SE], [SF], [SG], [SH], [SI], [SJ], [SK], [SL], [SM], [SN], [SO], [SP], [SQ], [SR], [SS], [ST], [SU], [SV], [SW], [SX], [SY], [SZ].
 3. EQUIPMENT IDENTIFIED WITH THE FOLLOWING CODE LETTERS REQUIRE CLASS I.E. POWER SOURCE: CODE: [SA], [SB], [SC], [SD], [SE], [SF], [SG], [SH], [SI], [SJ], [SK], [SL], [SM], [SN], [SO], [SP], [SQ], [SR], [SS], [ST], [SU], [SV], [SW], [SX], [SY], [SZ].
 4. TO WASTE TANK VIA PLUMBING EQUIPMENT DRAIN.
 5. TO EQUIP 50 TANK VIA PLUMBING EQUIPMENT DRAIN.
 6. FOR COMPARTMENTS SEE DWG. G-161 (S).
 7. * INDICATES VENDOR SUPPLIED.
 8. THE REFUELING WATER STORAGE POOL AND LAKE AND THE REFUELING CAVITY AND LAKE ARE CLASSIFIED AS STRUCTURES AND THEREFORE NOT ASSIGNED SAFETY CLASS BUT ARE CONSTRUCTED AND CONSTRUCTED AS SEISMIC PART I UNDER THE 10 CFR 50 APPENDIX B REQUIREMENTS. THE LAKE AND LAKE ARE CONSTRUCTED TO ASME SECTION III CODE REQUIREMENTS USING ASME SECTION III MATERIALS.

REFERENCE DRAWINGS

VALVES AND SPECIALTIES LIST	581074 A/B
PIPING LINE LIST	581075 A/B
INSTRUMENT SCHEMATIC AND LOGIC DIAGRAMS (PIPEVALVES AND INSTRUMENT SYMBOLS)	152449-431
INSTRUMENT LIST	152449-434

NUCLEAR SAFETY RELATED

COLOR CODE

- PIPE HYDRO 'D'
- BOUNDARIES, LINE NO., TEST NO'S
- CODE DATA REPORT NUMBER

REACTOR CONTAINMENT BUILDING

NO.	DATE	REVISION	BY	CHK	APPROVED
10	11/15/83				
11	11/15/83				
12	11/15/83				
13	11/15/83				
14	11/15/83				
15	11/15/83				
16	11/15/83				
17	11/15/83				
18	11/15/83				
19	11/15/83				

8412180435

THIS DOCUMENT IS THE PROPERTY OF EBASCO SERVICES INCORPORATED. IT IS LOANED TO YOU FOR YOUR INFORMATION AND USE ONLY. IT IS NOT TO BE REPRODUCED OR TRANSMITTED IN ANY FORM OR BY ANY MEANS, ELECTRONIC OR MECHANICAL, INCLUDING PHOTOCOPYING, RECORDING, OR BY ANY INFORMATION STORAGE AND RETRIEVAL SYSTEM, WITHOUT THE WRITTEN PERMISSION OF EBASCO SERVICES INCORPORATED.

LOUISIANA POWER & LIGHT COMPANY
WATERFORD S.E. UNIT NO. 3
1977 - 1165 MW INSTALLATION
FLOW DIAGRAM
CONTAINMENT SPRAY B
REFUELING WATER STORAGE POOL

EBASCO SERVICES INCORPORATED NEW YORK

SCALE NONE APPROVED DATE 11/15/83
DIV. MECH. [Signature] 11/15/83
DR. CIVILIAN [Signature] 11/15/83
CH. S. [Signature] 11/15/83

LOU-1564
G-163

PDR RIDS

8412180435

