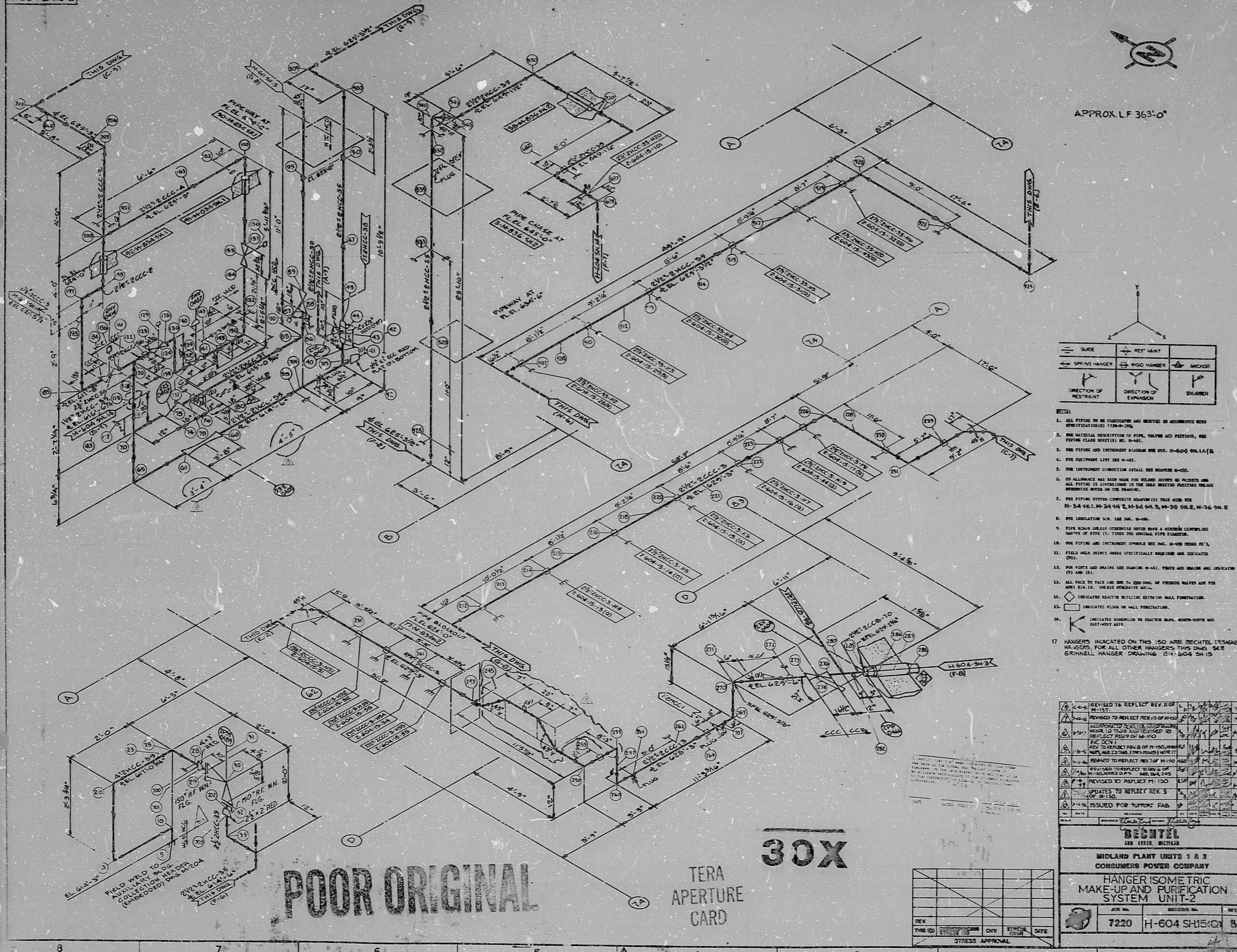
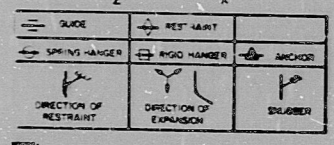


H-604 SH150



APPROX. LF 363'-0"



1. ALL PIPING TO BE FABRICATED AND INSTALLED IN ACCORDANCE WITH SPECIFICATIONS IN PIPING-200.
2. FOR MATERIAL DESCRIPTION OF PIPE, VALVES AND FITTINGS, SEE PIPING CLASS SHEET(S) M-10-481.
3. FOR PIPING AND INSTRUMENT SYMBOLS SEE SPEC. D-400 904.1(A).
4. FOR FITTING LEVY SIZE D-481.
5. FOR INSTRUMENT CONNECTION DETAIL SEE DRAWING D-502.
6. FOR ALLOWANCE HAS BEEN MADE FOR WELDING JOINTS AND ALL FITTINGS TO BE PROVIDED IN THE CASE REACTION PRESSURE UNLESS NOTED ON THE DRAWING.
7. FOR PIPING SYSTEM COMPLETE DRAWING(S) THIS DRAWING IS: M-3-4 904.1, M-3-4 904.2, M-3-4 904.3, M-3-4 904.4, M-3-4 904.5, M-3-4 904.6, M-3-4 904.7, M-3-4 904.8, M-3-4 904.9, M-3-4 904.10, M-3-4 904.11, M-3-4 904.12, M-3-4 904.13, M-3-4 904.14, M-3-4 904.15, M-3-4 904.16, M-3-4 904.17, M-3-4 904.18, M-3-4 904.19, M-3-4 904.20, M-3-4 904.21, M-3-4 904.22, M-3-4 904.23, M-3-4 904.24, M-3-4 904.25, M-3-4 904.26, M-3-4 904.27, M-3-4 904.28, M-3-4 904.29, M-3-4 904.30, M-3-4 904.31, M-3-4 904.32, M-3-4 904.33, M-3-4 904.34, M-3-4 904.35, M-3-4 904.36, M-3-4 904.37, M-3-4 904.38, M-3-4 904.39, M-3-4 904.40, M-3-4 904.41, M-3-4 904.42, M-3-4 904.43, M-3-4 904.44, M-3-4 904.45, M-3-4 904.46, M-3-4 904.47, M-3-4 904.48, M-3-4 904.49, M-3-4 904.50, M-3-4 904.51, M-3-4 904.52, M-3-4 904.53, M-3-4 904.54, M-3-4 904.55, M-3-4 904.56, M-3-4 904.57, M-3-4 904.58, M-3-4 904.59, M-3-4 904.60, M-3-4 904.61, M-3-4 904.62, M-3-4 904.63, M-3-4 904.64, M-3-4 904.65, M-3-4 904.66, M-3-4 904.67, M-3-4 904.68, M-3-4 904.69, M-3-4 904.70, M-3-4 904.71, M-3-4 904.72, M-3-4 904.73, M-3-4 904.74, M-3-4 904.75, M-3-4 904.76, M-3-4 904.77, M-3-4 904.78, M-3-4 904.79, M-3-4 904.80, M-3-4 904.81, M-3-4 904.82, M-3-4 904.83, M-3-4 904.84, M-3-4 904.85, M-3-4 904.86, M-3-4 904.87, M-3-4 904.88, M-3-4 904.89, M-3-4 904.90, M-3-4 904.91, M-3-4 904.92, M-3-4 904.93, M-3-4 904.94, M-3-4 904.95, M-3-4 904.96, M-3-4 904.97, M-3-4 904.98, M-3-4 904.99, M-3-4 904.100.
8. FOR LEGISLATION SEE SPEC. D-481.
9. PIPE SLOTTED UNLESS OTHERWISE NOTED HAVE A STANDARD CENTERED SLOTTED END TO THE ORIGINAL PIPE SLOTTED.
10. FOR PIPING AND INSTRUMENT SYMBOLS SEE SPEC. D-400 904.1(A).
11. FIELD WELD JOINTS WHERE SPECIFICALLY REQUIRED ARE INDICATED ON DRAWING.
12. FOR VERTS AND BRACKETS SEE DRAWING D-481. VERTS AND BRACKETS ARE INDICATED ON DRAWING.
13. ALL FACE TO FACE AND END TO END DIMS OF PIPING WELDED ARE FOR AS-BUILT DIMS. UNLESS OTHERWISE NOTED.
14.  $\diamond$  INDICATES REACTIVE BUILDING WITH TOP WALL PENETRATION.
15.  $\square$  INDICATES FLOOR OR WALL PENETRATION.
16.  $\triangle$  INDICATES DIMENSION TO REACTION SLING, CENTER-TO-CENTER AND EAST-WEST AXIS.
17. HANGERS INDICATED ON THIS ISOMETRIC DRAWING DESIGNED BY GRINNELL HANGER FOR ALL OTHER HANGERS THIS DRAWING, SEE GRINNELL HANGER DRAWING D-411-604 SH150.

REV.	DATE	BY	CHKD.	DATE	DESCRIPTION
1					REVISED TO REFLECT REV. 10 OF M-100
2					REVISED TO REFLECT REV. 11 OF M-100
3					REVISED TO REFLECT REV. 12 OF M-100
4					REVISED TO REFLECT REV. 13 OF M-100
5					REVISED TO REFLECT REV. 14 OF M-100
6					REVISED TO REFLECT REV. 15 OF M-100
7					REVISED TO REFLECT REV. 16 OF M-100
8					REVISED TO REFLECT REV. 17 OF M-100
9					REVISED TO REFLECT REV. 18 OF M-100
10					REVISED TO REFLECT REV. 19 OF M-100
11					REVISED TO REFLECT REV. 20 OF M-100
12					REVISED TO REFLECT REV. 21 OF M-100
13					REVISED TO REFLECT REV. 22 OF M-100
14					REVISED TO REFLECT REV. 23 OF M-100
15					REVISED TO REFLECT REV. 24 OF M-100
16					REVISED TO REFLECT REV. 25 OF M-100
17					REVISED TO REFLECT REV. 26 OF M-100
18					REVISED TO REFLECT REV. 27 OF M-100
19					REVISED TO REFLECT REV. 28 OF M-100
20					REVISED TO REFLECT REV. 29 OF M-100
21					REVISED TO REFLECT REV. 30 OF M-100
22					REVISED TO REFLECT REV. 31 OF M-100
23					REVISED TO REFLECT REV. 32 OF M-100
24					REVISED TO REFLECT REV. 33 OF M-100
25					REVISED TO REFLECT REV. 34 OF M-100
26					REVISED TO REFLECT REV. 35 OF M-100
27					REVISED TO REFLECT REV. 36 OF M-100
28					REVISED TO REFLECT REV. 37 OF M-100
29					REVISED TO REFLECT REV. 38 OF M-100
30					REVISED TO REFLECT REV. 39 OF M-100
31					REVISED TO REFLECT REV. 40 OF M-100
32					REVISED TO REFLECT REV. 41 OF M-100
33					REVISED TO REFLECT REV. 42 OF M-100
34					REVISED TO REFLECT REV. 43 OF M-100
35					REVISED TO REFLECT REV. 44 OF M-100
36					REVISED TO REFLECT REV. 45 OF M-100
37					REVISED TO REFLECT REV. 46 OF M-100
38					REVISED TO REFLECT REV. 47 OF M-100
39					REVISED TO REFLECT REV. 48 OF M-100
40					REVISED TO REFLECT REV. 49 OF M-100
41					REVISED TO REFLECT REV. 50 OF M-100
42					REVISED TO REFLECT REV. 51 OF M-100
43					REVISED TO REFLECT REV. 52 OF M-100
44					REVISED TO REFLECT REV. 53 OF M-100
45					REVISED TO REFLECT REV. 54 OF M-100
46					REVISED TO REFLECT REV. 55 OF M-100
47					REVISED TO REFLECT REV. 56 OF M-100
48					REVISED TO REFLECT REV. 57 OF M-100
49					REVISED TO REFLECT REV. 58 OF M-100
50					REVISED TO REFLECT REV. 59 OF M-100
51					REVISED TO REFLECT REV. 60 OF M-100
52					REVISED TO REFLECT REV. 61 OF M-100
53					REVISED TO REFLECT REV. 62 OF M-100
54					REVISED TO REFLECT REV. 63 OF M-100
55					REVISED TO REFLECT REV. 64 OF M-100
56					REVISED TO REFLECT REV. 65 OF M-100
57					REVISED TO REFLECT REV. 66 OF M-100
58					REVISED TO REFLECT REV. 67 OF M-100
59					REVISED TO REFLECT REV. 68 OF M-100
60					REVISED TO REFLECT REV. 69 OF M-100
61					REVISED TO REFLECT REV. 70 OF M-100
62					REVISED TO REFLECT REV. 71 OF M-100
63					REVISED TO REFLECT REV. 72 OF M-100
64					REVISED TO REFLECT REV. 73 OF M-100
65					REVISED TO REFLECT REV. 74 OF M-100
66					REVISED TO REFLECT REV. 75 OF M-100
67					REVISED TO REFLECT REV. 76 OF M-100
68					REVISED TO REFLECT REV. 77 OF M-100
69					REVISED TO REFLECT REV. 78 OF M-100
70					REVISED TO REFLECT REV. 79 OF M-100
71					REVISED TO REFLECT REV. 80 OF M-100
72					REVISED TO REFLECT REV. 81 OF M-100
73					REVISED TO REFLECT REV. 82 OF M-100
74					REVISED TO REFLECT REV. 83 OF M-100
75					REVISED TO REFLECT REV. 84 OF M-100
76					REVISED TO REFLECT REV. 85 OF M-100
77					REVISED TO REFLECT REV. 86 OF M-100
78					REVISED TO REFLECT REV. 87 OF M-100
79					REVISED TO REFLECT REV. 88 OF M-100
80					REVISED TO REFLECT REV. 89 OF M-100
81					REVISED TO REFLECT REV. 90 OF M-100
82					REVISED TO REFLECT REV. 91 OF M-100
83					REVISED TO REFLECT REV. 92 OF M-100
84					REVISED TO REFLECT REV. 93 OF M-100
85					REVISED TO REFLECT REV. 94 OF M-100
86					REVISED TO REFLECT REV. 95 OF M-100
87					REVISED TO REFLECT REV. 96 OF M-100
88					REVISED TO REFLECT REV. 97 OF M-100
89					REVISED TO REFLECT REV. 98 OF M-100
90					REVISED TO REFLECT REV. 99 OF M-100
91					REVISED TO REFLECT REV. 100 OF M-100

BECHTEL		
MIDLAND PLANT UNITS 1 & 2		
CONSUMERS POWER COMPANY		
HANGER ISOMETRIC MAKE-UP AND PURIFICATION SYSTEM UNIT-2		
REV. NO.	REVISION	DATE
7220	H-604 SH150X 3	

POOR ORIGINAL

TERA APERTURE CARD

30X

DESIGNED BY	DATE
CHECKED BY	DATE
APPROVED BY	DATE

11

11

8.5

8.5

11

17

11

11

8.5

8.5

11

17

RIDS

810220215

