

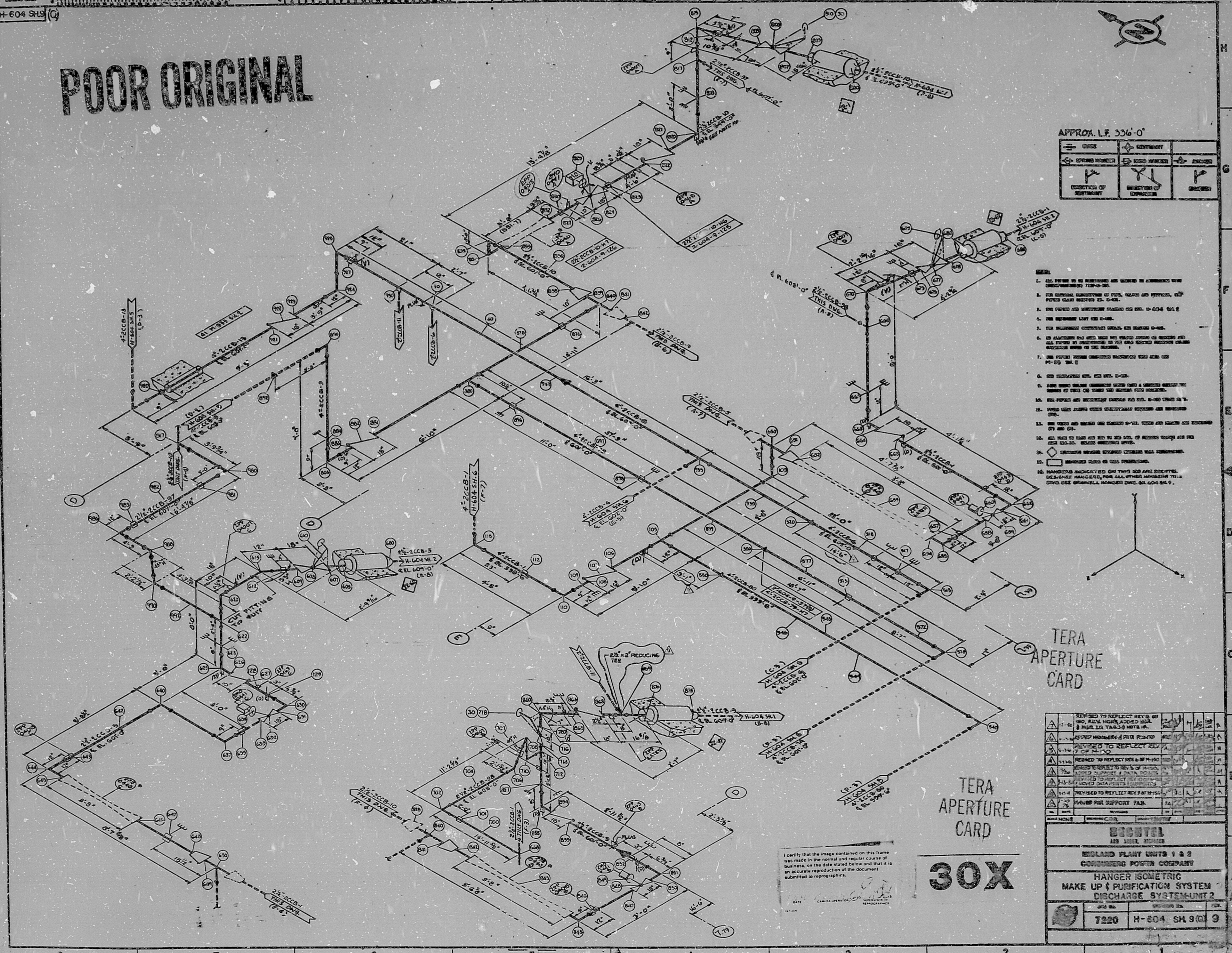
H-604 SH9 (Q)

POOR ORIGINAL

APPROX. I.F. 356'-0"

	MAIN LINE		SECONDARY
	OPENING IN MAIN LINE		OPENING IN SECONDARY
	DIRECTION OF MAIN LINE		DIRECTION OF SECONDARY

1. ALL SYMBOLS TO BE IDENTIFIED AND CHECKED BY APPROVED FOR DISSEMINATION (AFD) 10-4-68.
2. THE ORIGINAL DRAWING OF THIS SYSTEM AND SYMBOLS, AND POWER CABLE NUMBERED BY 10-4-68.
3. THE POWER CABLE NUMBERING SHALL BE 10-4-68 10-4-68.
4. THE NUMBERING LIST IS 10-4-68.
5. THE NUMBERING CHECKED BY 10-4-68.
6. ALL SYMBOLS AND OPENINGS TO BE IDENTIFIED BY APPROVED FOR DISSEMINATION (AFD) 10-4-68.
7. THE POWER CABLE NUMBERING SHALL BE 10-4-68 10-4-68.
8. THE NUMBERING LIST IS 10-4-68.
9. THE POWER CABLE NUMBERING SHALL BE 10-4-68 10-4-68.
10. THE POWER CABLE NUMBERING SHALL BE 10-4-68 10-4-68.
11. THE POWER CABLE NUMBERING SHALL BE 10-4-68 10-4-68.
12. THE POWER CABLE NUMBERING SHALL BE 10-4-68 10-4-68.
13. THE POWER CABLE NUMBERING SHALL BE 10-4-68 10-4-68.
14. THE POWER CABLE NUMBERING SHALL BE 10-4-68 10-4-68.
15. THE POWER CABLE NUMBERING SHALL BE 10-4-68 10-4-68.
16. THE POWER CABLE NUMBERING SHALL BE 10-4-68 10-4-68.
17. THE POWER CABLE NUMBERING SHALL BE 10-4-68 10-4-68.
18. THE POWER CABLE NUMBERING SHALL BE 10-4-68 10-4-68.
19. THE POWER CABLE NUMBERING SHALL BE 10-4-68 10-4-68.
20. THE POWER CABLE NUMBERING SHALL BE 10-4-68 10-4-68.



TERA APERTURE CARD

TERA APERTURE CARD

30X

I certify that the image contained on this frame was made in the normal and regular course of business, on the date stated below and that it is an accurate reproduction of the document submitted in reprographic form.

DATE: 10-4-68

	REQUIRED TO REFLECT KEY TO 10-4-68 10-4-68 10-4-68		REQUIRED TO REFLECT KEY TO 10-4-68 10-4-68 10-4-68
	REQUIRED TO REFLECT KEY TO 10-4-68 10-4-68 10-4-68		REQUIRED TO REFLECT KEY TO 10-4-68 10-4-68 10-4-68
	REQUIRED TO REFLECT KEY TO 10-4-68 10-4-68 10-4-68		REQUIRED TO REFLECT KEY TO 10-4-68 10-4-68 10-4-68

**GENERAL**  
 10-4-68  
 ENGLAND PLANT UNITS 1 & 2  
 CONSUMERS POWER COMPANY  
 HANGER ISOMETRIC  
 MAKE UP & PURIFICATION SYSTEM  
 DISCHARGE SYSTEM-UNIT 2  
 7220 H-604 SH9 (Q) 9

11

11

8.5"

8.5"

11"

17"

11

11

8.5"

8.5"

11"

17"



RIDS

8/2220198

