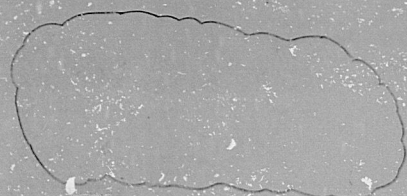
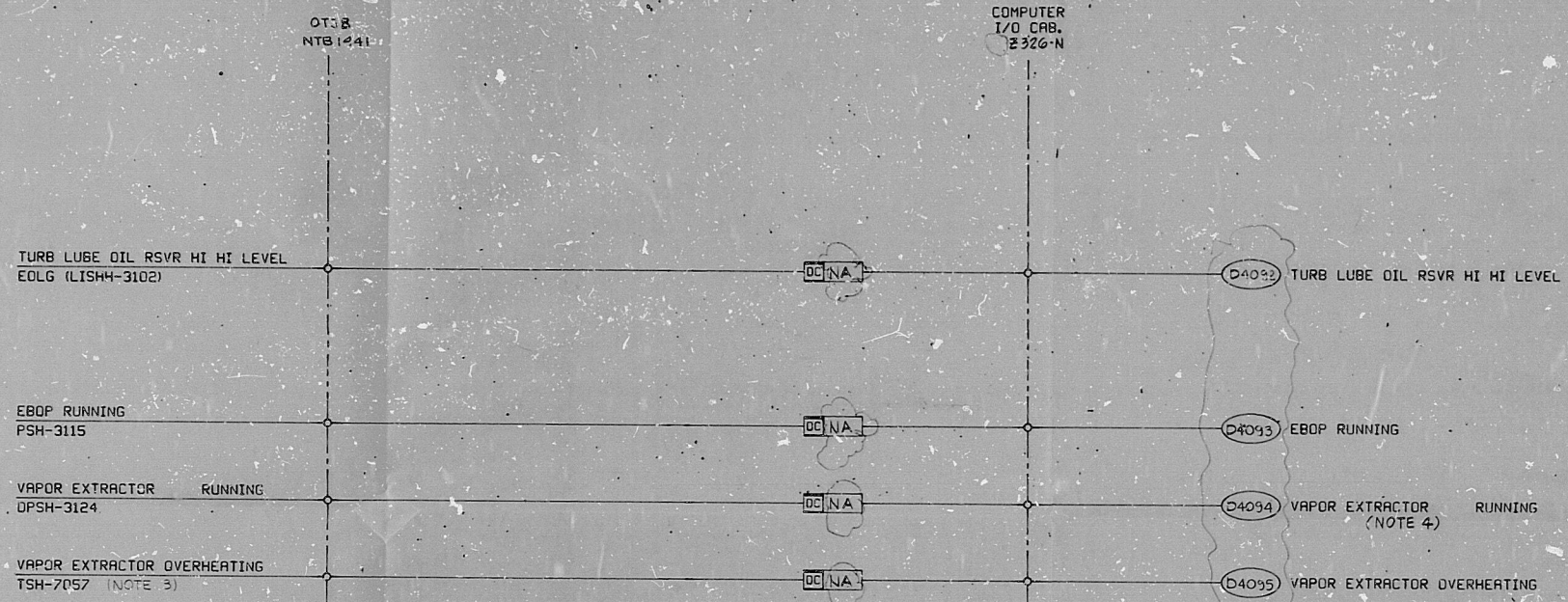


J-19-0 SH. 8

This drawing and the design it covers are the property of BECHTEL. They are hereby loaned and on the borrower's express agreement that they will not be reproduced, copied, exhibited, nor used except in the limited way and private use permitted by any written consent given by the lender to the borrower.



- NOTES:**
1. HIGH TURBINE LUBE OIL RESERVOIR VAPOR TEMPERATURE IS ALARMED THRU THE COMPUTER.
 2. DELETED
 3. CONTACTS OPEN UPON THE CONDITION STATED.
 4. COMPUTER SHALL ALARM WHEN VAPOR EXTRACTOR IS NOT RUNNING.

P.R.C. APERTURE CARD

NO.	DATE	REVISIONS	BY	CHECKED	DESIGNED	ENGR	PROJ	APPR
421.2		DESIGN FREEZE ISSUE	TF	SD	SG			
421.2	7/17/55	REVISED AS NOTED	CM	RB	JA			
421.2	7/17/55	REVISED AS NOTED	WD	JA	SG			
421.2	7/17/55	REVISED AS NOTED	CE	JA	SG			
421.2	7/17/55	ISSUED FOR CONSTRUCTION						

SCALE	NDNE	DESIGNED	CHS	DRAWN	RCG
BECHTEL SAN FRANCISCO					
PUBLIC SERVICE ELECTRIC AND GAS COMPANY HOPE CREEK GENERATING STATION					
LOGIC DIAGRAM LUBE OIL					
OIL RESERVOIR COMPUTER INPUTS					
JOB No.	DRAWING No.	REV.			
10855	J-19-0 SH. 8	4			

S/U CB, CD

22 X 34 "D" SIZE

RIDS

8307270525

