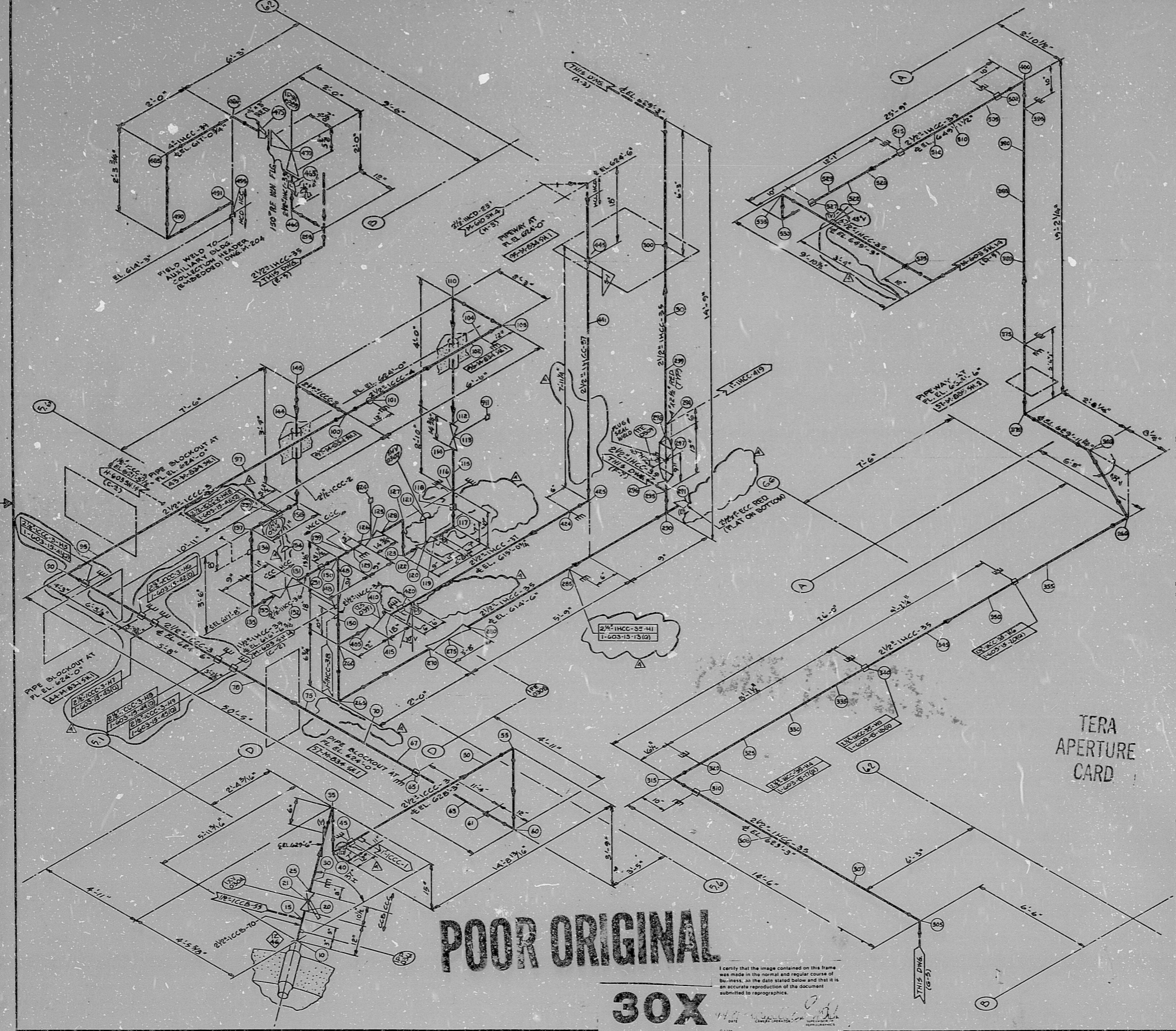


H-603Sh.15(Q)



APPROX. L.F. 272'-0"

1. ALL PIPING TO BE FABRICATED AND ERECTED IN ACCORDANCE WITH SPECIFICATIONS 1700-0-200.
2. FOR GENERAL DESCRIPTION OF PIPE, FITTINGS AND FITTINGS, SEE GENERAL CLASS SHEETS NO. 10-401.
3. FOR PIPE AND EXTENSIVE SIZES SEE INT. 10-400-001.
4. SEE MATERIAL LIST FOR SIZES.
5. FOR CONNECTIONS OF PIPE SEE DRAWING 10-401.
6. FOR ALLOWANCE HAS BEEN MADE FOR ALLOWANCE OF CASSETS AND ALL PIPING TO BE PROVIDED IN THE OPEN EXPOSED PORTION EXCEPT WHERE NOTED IN THE DRAWING.
7. FOR PIPING SYSTEMS REFER TO DRAWING 10-401-001.
8. FOR INSULATION SEE INT. 10-400-001.
9. PIPE HANGERS SHALL BE PROVIDED WITH NEARBY CURTAINING WEIGHT OF STEEL TO BE PROVIDED IN THE GENERAL PIPING DRAWING.
10. FOR PIPING AND EXTENSIVE SIZES SEE INT. 10-400-001.
11. STEEL AND BRASS SPECIALLY NOTED ARE INDICATED (SNI).
12. FOR VALVE AND HANGER SEE DRAWING 10-401. FOR VALVES SEE INT. 10-400-001.
13. ALL PIPING TO BE PROVIDED WITH NEARBY CURTAINING WEIGHT OF STEEL TO BE PROVIDED IN THE GENERAL PIPING DRAWING.
14. FOR PIPING AND EXTENSIVE SIZES SEE INT. 10-400-001.
15. FOR PIPING AND EXTENSIVE SIZES SEE INT. 10-400-001.
16. FOR PIPING AND EXTENSIVE SIZES SEE INT. 10-400-001.
17. MANAGERS INDICATED ON THIS DRAWING ARE BEING DESIGNED MANAGERS FOR ALL OTHER MANUSCRIPTS THIS DRAWING GARNER MANUSCRIPT 10-401-001.

TERA APERTURE CARD

THIS IS A	DATE	DATE	DATE
STRESS APPROVAL			

POOR ORIGINAL

30X

I certify that the image contained on this frame was made in the normal and regular course of business, on the date stated below and that it is an accurate reproduction of the document submitted to the printer.

DATE	DATE	DATE	DATE
DATE	DATE	DATE	DATE

DECHTEL
 1800 1828, NICHOLS
 MIDLAND PLANT UNITS 1 & 2
 CONSUMERS POWER COMPANY
 HANGER ISOMETRIC
 MAKE-UP AND PURIFICATION
 SYSTEM UNIT-1

JOB NO.	DRAWING NO.	REV.
7220	H-603 Sh.15(Q)	4

8.5"
11"
17"

8.5"
11"
17"

RIDS

8112220164

