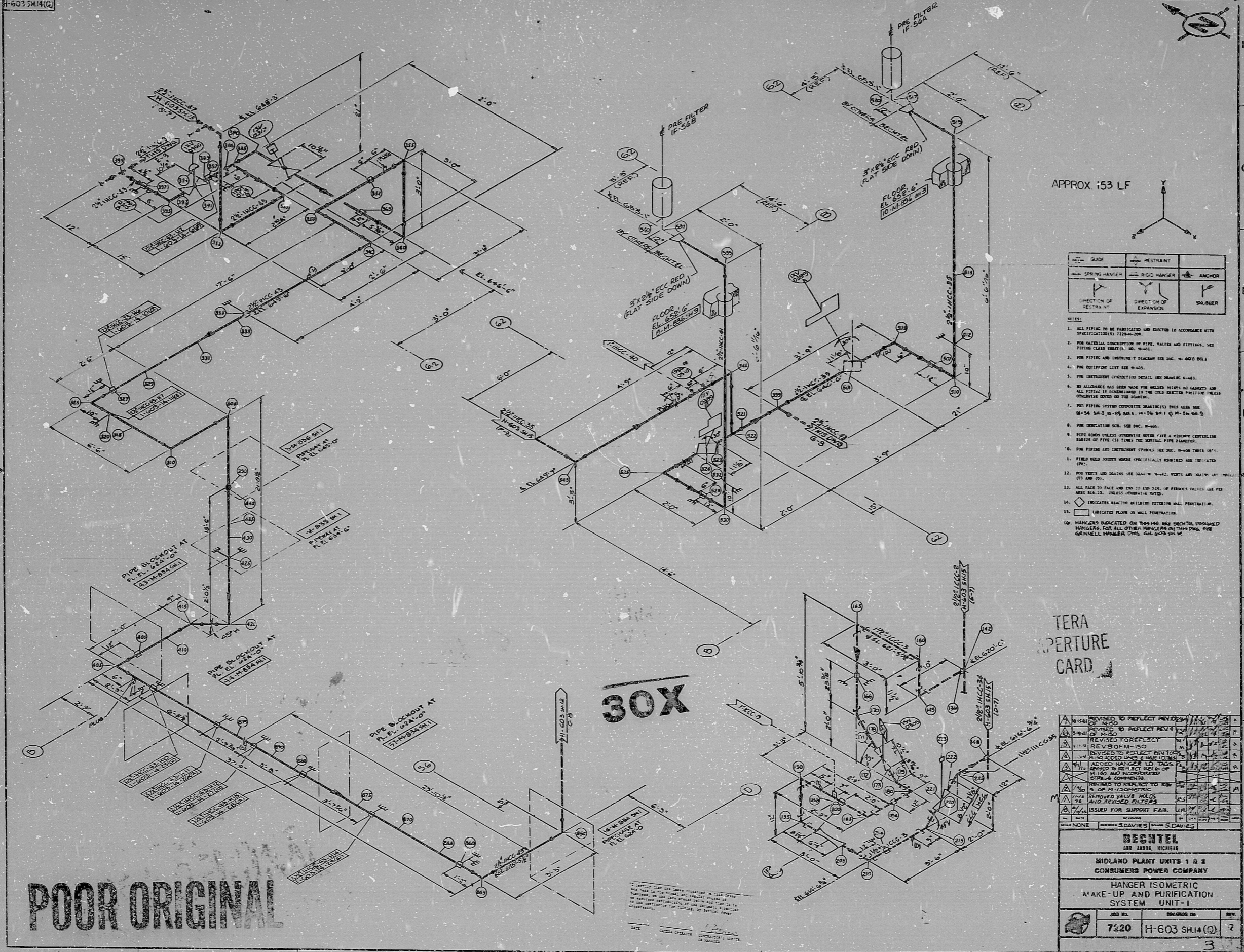


H-603 SH14(Q)

SIZE E



APPROX. 153 LF

	GUIDE		RESTRAINT
	SPRING HANGER		ROD HANGER
	DIRECTION OF RESTRAINT		DIRECTION OF EXPANSION
	SLUICER		

- NOTES:
1. ALL PIPING TO BE FABRICATED AND INSTALLED IN ACCORDANCE WITH SPECIFICATIONS 1220-109.
  2. FOR MATERIAL DESCRIPTION OF PIPE, VALVES AND FITTINGS, SEE PIPING CLASS SHEET (S. 80, 9-461).
  3. FOR PIPING AND INSTRUMENT T-DIAGRAMS SEE DOC. W-403 001.
  4. FOR EQUIPMENT LIST SEE 9-445.
  5. FOR INSTRUMENT CONNECTION DETAIL SEE DRAWING W-481.
  6. NO ALLOWANCE HAS BEEN MADE FOR WELDED JOINTS OR CASSETS AND ALL FITTINGS IS BOUND OVER IN THE CASE OF SECTION POSITION UNLESS OTHERWISE NOTED ON THE DRAWING.
  7. FOR PIPING SYSTEMS COMPLETE DRAWINGS THIS AREA SEE: 28-34 24-3, 18-25 24-1, 14-20 24-1, 10-24 24-1.
  8. FOR IRRADIATION SEE DOC. W-480.
  9. PIPE SIZES UNLESS OTHERWISE NOTED ARE A MINIMUM CENTERLINE SIZE OF PIPE (O.D.) TIMES THE NOMINAL PIPE DIAMETER.
  10. FOR PIPING AND INSTRUMENT SYMBOLS SEE DOC. W-406 THREE 147.
  11. FIELD WELD JOINTS WHERE SPECIFICALLY REQUIRED ARE INDICATED (W).
  12. FOR VENTS AND DRAINS SEE DRAW. W-442, VENTS AND DRAINS (V-1, V-2, V-3, V-4, V-5, V-6, V-7, V-8, V-9, V-10, V-11, V-12, V-13, V-14, V-15, V-16, V-17, V-18, V-19).
  13. ALL FACE TO FACE AND END TO END JOINTS, IF PERMITTED, SHALL BE FOR FACE TO FACE OR END TO END JOINTS, IF PERMITTED, SHALL BE FOR FACE TO FACE OR END TO END JOINTS.
  14. INDICATES QUALITY INSULATION INCLUDING WALL PENETRATION.
  15. INDICATES FLUORIN WALL PENETRATION.
  16. HANGERS INDICATED ON THIS DRAWING ARE BECHTEL DESIGNED HANGERS. FOR ALL OTHER HANGERS ON THIS DRAWING, THE GUNNELL NUMBER DRS. 614-609-24 IS

TERA  
APERTURE  
CARD

REVISION	DATE	BY	CHKD
1	11/15/50	J. DAVIES	J. DAVIES
2	11/15/50	J. DAVIES	J. DAVIES
3	11/15/50	J. DAVIES	J. DAVIES
4	11/15/50	J. DAVIES	J. DAVIES
5	11/15/50	J. DAVIES	J. DAVIES
6	11/15/50	J. DAVIES	J. DAVIES
7	11/15/50	J. DAVIES	J. DAVIES
8	11/15/50	J. DAVIES	J. DAVIES
9	11/15/50	J. DAVIES	J. DAVIES
10	11/15/50	J. DAVIES	J. DAVIES
11	11/15/50	J. DAVIES	J. DAVIES
12	11/15/50	J. DAVIES	J. DAVIES
13	11/15/50	J. DAVIES	J. DAVIES
14	11/15/50	J. DAVIES	J. DAVIES
15	11/15/50	J. DAVIES	J. DAVIES
16	11/15/50	J. DAVIES	J. DAVIES
17	11/15/50	J. DAVIES	J. DAVIES
18	11/15/50	J. DAVIES	J. DAVIES
19	11/15/50	J. DAVIES	J. DAVIES
20	11/15/50	J. DAVIES	J. DAVIES
21	11/15/50	J. DAVIES	J. DAVIES
22	11/15/50	J. DAVIES	J. DAVIES
23	11/15/50	J. DAVIES	J. DAVIES
24	11/15/50	J. DAVIES	J. DAVIES
25	11/15/50	J. DAVIES	J. DAVIES
26	11/15/50	J. DAVIES	J. DAVIES
27	11/15/50	J. DAVIES	J. DAVIES
28	11/15/50	J. DAVIES	J. DAVIES
29	11/15/50	J. DAVIES	J. DAVIES
30	11/15/50	J. DAVIES	J. DAVIES
31	11/15/50	J. DAVIES	J. DAVIES
32	11/15/50	J. DAVIES	J. DAVIES
33	11/15/50	J. DAVIES	J. DAVIES
34	11/15/50	J. DAVIES	J. DAVIES
35	11/15/50	J. DAVIES	J. DAVIES
36	11/15/50	J. DAVIES	J. DAVIES
37	11/15/50	J. DAVIES	J. DAVIES
38	11/15/50	J. DAVIES	J. DAVIES
39	11/15/50	J. DAVIES	J. DAVIES
40	11/15/50	J. DAVIES	J. DAVIES
41	11/15/50	J. DAVIES	J. DAVIES
42	11/15/50	J. DAVIES	J. DAVIES
43	11/15/50	J. DAVIES	J. DAVIES
44	11/15/50	J. DAVIES	J. DAVIES
45	11/15/50	J. DAVIES	J. DAVIES
46	11/15/50	J. DAVIES	J. DAVIES
47	11/15/50	J. DAVIES	J. DAVIES
48	11/15/50	J. DAVIES	J. DAVIES
49	11/15/50	J. DAVIES	J. DAVIES
50	11/15/50	J. DAVIES	J. DAVIES
51	11/15/50	J. DAVIES	J. DAVIES
52	11/15/50	J. DAVIES	J. DAVIES
53	11/15/50	J. DAVIES	J. DAVIES
54	11/15/50	J. DAVIES	J. DAVIES
55	11/15/50	J. DAVIES	J. DAVIES
56	11/15/50	J. DAVIES	J. DAVIES
57	11/15/50	J. DAVIES	J. DAVIES
58	11/15/50	J. DAVIES	J. DAVIES
59	11/15/50	J. DAVIES	J. DAVIES
60	11/15/50	J. DAVIES	J. DAVIES
61	11/15/50	J. DAVIES	J. DAVIES
62	11/15/50	J. DAVIES	J. DAVIES
63	11/15/50	J. DAVIES	J. DAVIES
64	11/15/50	J. DAVIES	J. DAVIES
65	11/15/50	J. DAVIES	J. DAVIES
66	11/15/50	J. DAVIES	J. DAVIES
67	11/15/50	J. DAVIES	J. DAVIES
68	11/15/50	J. DAVIES	J. DAVIES
69	11/15/50	J. DAVIES	J. DAVIES
70	11/15/50	J. DAVIES	J. DAVIES
71	11/15/50	J. DAVIES	J. DAVIES
72	11/15/50	J. DAVIES	J. DAVIES
73	11/15/50	J. DAVIES	J. DAVIES
74	11/15/50	J. DAVIES	J. DAVIES
75	11/15/50	J. DAVIES	J. DAVIES
76	11/15/50	J. DAVIES	J. DAVIES
77	11/15/50	J. DAVIES	J. DAVIES
78	11/15/50	J. DAVIES	J. DAVIES
79	11/15/50	J. DAVIES	J. DAVIES
80	11/15/50	J. DAVIES	J. DAVIES
81	11/15/50	J. DAVIES	J. DAVIES
82	11/15/50	J. DAVIES	J. DAVIES
83	11/15/50	J. DAVIES	J. DAVIES
84	11/15/50	J. DAVIES	J. DAVIES
85	11/15/50	J. DAVIES	J. DAVIES
86	11/15/50	J. DAVIES	J. DAVIES
87	11/15/50	J. DAVIES	J. DAVIES
88	11/15/50	J. DAVIES	J. DAVIES
89	11/15/50	J. DAVIES	J. DAVIES
90	11/15/50	J. DAVIES	J. DAVIES
91	11/15/50	J. DAVIES	J. DAVIES
92	11/15/50	J. DAVIES	J. DAVIES
93	11/15/50	J. DAVIES	J. DAVIES
94	11/15/50	J. DAVIES	J. DAVIES
95	11/15/50	J. DAVIES	J. DAVIES
96	11/15/50	J. DAVIES	J. DAVIES
97	11/15/50	J. DAVIES	J. DAVIES
98	11/15/50	J. DAVIES	J. DAVIES
99	11/15/50	J. DAVIES	J. DAVIES
100	11/15/50	J. DAVIES	J. DAVIES

<b>BECHTEL</b>		
300 14TH, OREGON		
MIDLAND PLANT UNITS 1 & 2		
CONSUMERS POWER COMPANY		
HANGER ISOMETRIC		
MAKE-UP AND PURIFICATION		
SYSTEM UNIT-1		
JOB NO.	DRAWING NO.	REV.
7420	H-603 SH14(Q)	2
		3

POOR ORIGINAL

30X

8.5" 11" 17"

8.5" 11" 17"



RIDS

812220162

